



Carina, 2 Moorabbin Drive

SOLD BY THE GILLESPIE TEAM

A beautifully renovated family haven awaits in the heart of Carina! Set on a spacious 663m² block, offering park views and walking distance to Minnippi Golf club, this home has been thoughtfully transformed with stylish finishes, warm hardwood timber flooring, and a fresh modern feel. With multiple living and entertaining zones inside and out, it's the perfect setting for making lifelong memories.

Features at a Glance:

1. Freshly renovated - new bathrooms, paint, and lighting throughout.
2. Stylish timber floors and neutral tones for a relaxed, timeless feel.
3. Multiple entertaining areas, including a covered outdoor patio and balcony.
4. Two split-system air conditioners for year-round comfort.
5. Prime location offering park views and walking distance to Minnippi Golf club, plus near Westfield Carindale & more.



For Sale
Please Call _____

View
ljhooker.com.au/B2YJF4R

Contact
Bailey Atherton
0410 724 362
baileyatherton@ljhpp.com.au

Karl Gillespie
0411 599 850
karlgillespie@ljhpp.com.au



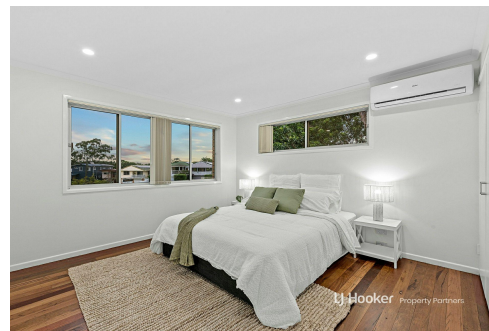
LJ Hooker Property Partners
07 3344 0288

Disclaimer: All information contained therein is gathered from relevant third parties sources. We cannot guarantee or give any warranty about the information provided. Interested parties must rely solely on their own enquiries.

The striking exterior blends classic brick with a refreshed, modern aesthetic. Inside, the open-plan layout feels airy and inviting, with warm timber floors that add character and durability. The bright, welcoming living area is perfect for unwinding, while the dining space seamlessly connects to the stylishly updated kitchen. With sleek white cabinetry, stainless-steel appliances, and ample storage, this kitchen is ready for both everyday meals and entertaining.

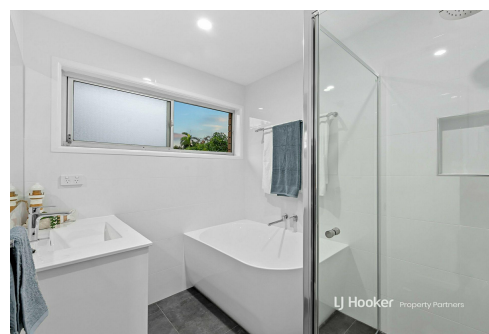


Enjoy the ease of multiple living zones, with a separate downstairs retreat offering extra space for a home office, playroom, or guest accommodation. The freshly updated bathrooms feature sleek tiling and quality fittings, adding a touch of everyday luxury.



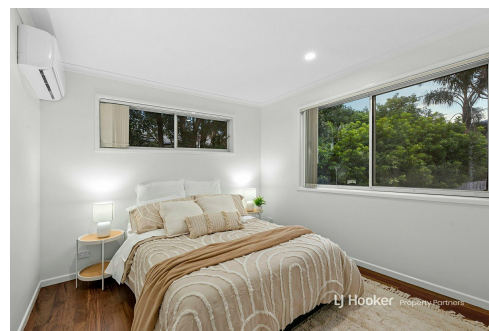
Outside, the expansive backyard is ready for family fun, with plenty of space for kids, pets, or future enhancements. A covered patio creates the ideal alfresco setting for weekend BBQs, while the balcony offers a peaceful spot to enjoy your morning coffee overlooking the leafy surrounds.

Nestled in a sought-after pocket of Carina, this home is surrounded by parks, schools, and top shopping destinations. With easy access to Westfield Carindale, Cannon Hill Plaza, public transport, and the nearby golf course, convenience is at your doorstep.



This is a rare opportunity to secure a fully renovated, read-to-move-in family home in a fantastic location. Don't miss out - contact Bailey Atherton or Karl Gillespie today!

All information contained herein is gathered from sources we consider to be reliable. However, we cannot guarantee or give any warranty about the information provided and interested parties must solely rely on their own enquiries.



K & Q Investments Pty Ltd with Sunnybank Districts P/L T/A LJ Hooker Property Partners
ABN 56 794 753 139/ 21 107 068 020

More About this Property

Property ID	B2YJF4R
Property Type	House
Land Area	663 m2
Including	Air Conditioning Toilets (2) Courtyard Balcony Outdoor Entertaining Floorboards Built-in-Robes Secure Parking Fully Fenced



Bailey Atherton 0410 724 362

Lead Agent at The Gillespie Team | baileyatherton@ljhpp.com.au

Karl Gillespie 0411 599 850

Partner & Agent/Independent Contractor | karlgillespie@ljhpp.com.au

LJ Hooker Property Partners 07 3344 0288

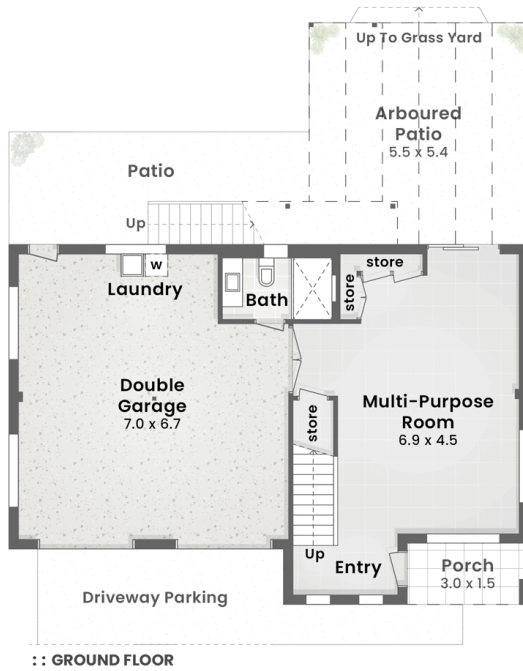
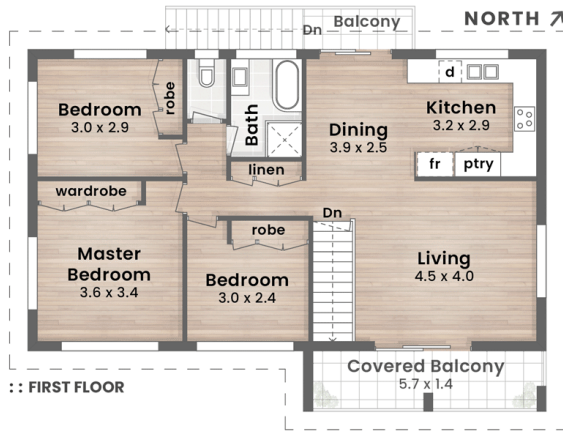
25 Pinelands Road, SUNNYBANK HILLS QLD 4109

propertypartners.ljhooker.com.au | sunnybankhills@ljhpp.com.au

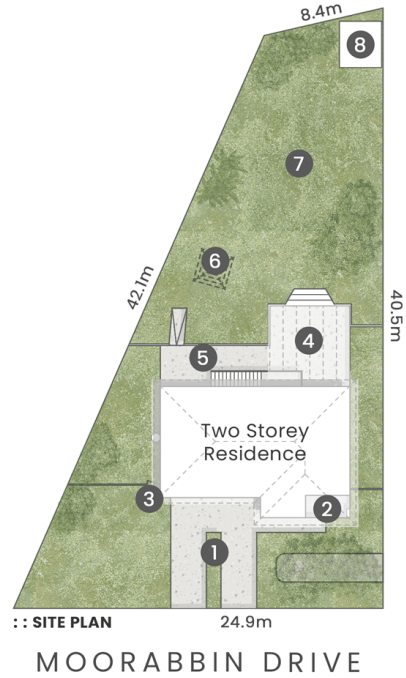


LJ Hooker Property Partners
07 3344 0288

Disclaimer: All information contained therein is gathered from relevant third parties sources. We cannot guarantee or give any warranty about the information provided. Interested parties must rely solely on their own enquiries.



- LEGEND**
- 1. Driveway Parking | 2. Entry Porch
 - 3. Side Access Gate | 4. Covered Patio
 - 5. Patio | 6. Clothes Line
 - 7. Fenced Grass Yard | 8. Garden Shed



LJ Hooker

Property Partners

2 Moorabbin Drive

CARINA

Internal 192m² | Covered Patio, Porch & Balconies 46m² | **Total 238m²**

663m²

3 Bed + MPR

2 Bath

2 Car + Off-Street

DISCLAIMER: This is not a legal document therefore all measurements and information provided is subject to survey. No permission is given to use or alter this Floor Plan without the consent of Pure Design Concepts. The overall presentation style, layout, imagery, fonts, background, colours and terminology has been originally created by PDC and is subject to strict copyright. No ownership is taken of building design. Find out more at puredesignconcepts.com.au