



1568 Creek Road, Carina

3  1  1 

SOLD BY THE GILLESPIE TEAM

Set on a generous 637m² north-east facing block, this inviting post-war timber highset captures the timeless character of Carina's family-friendly streetscape. A perfect match for first-home buyers, young families, or investors seeking long-term growth, it offers light-filled interiors, a practical layout, and a peaceful leafy outlook. With three comfortable bedrooms, a well-presented kitchen, and a generous backyard that invites relaxed entertaining, this home has been thoughtfully looked after.

Highlights:

- Character-rich post-war timber highset on a 637m² north-east facing block
- Light-filled living area framed by large windows and leafy outlooks
- Neatly presented kitchen with ample storage and electric appliances
- Three airy bedrooms, each beautifully styled for rest and retreat
- Spacious backyard offering room for kids, pets, or entertaining under the trees

Perfectly positioned in one of Carina's most convenient pockets, this home delivers easy access to everything families and professionals need. Enjoy being a stone's throw to the bus stops, mere minutes away from major retail and dining at Westfield Carindale and Cannon Hill Kmart Plaza, and a short drive to quality schools and luscious

FOR SALE

Please Call

AGENTS

Bailey Atherton
0410 724 362
baileyatherton@ljhpp.com.au

Karl Gillespie
0411 599 850
karlgillespie@ljhpp.com.au

AGENCY

LJ Hooker Property Partners
07 3344 0288

All information contained therein is gathered from relevant third parties sources. We cannot guarantee or give any warranty about the information provided. Interested parties must rely solely on their own enquiries.



parkland.

Privately set behind a canopy of mature trees, the home enjoys a wonderfully peaceful position that feels worlds away from the bustle. The established greenery provides natural shade and privacy, while dappled sunlight filters through to reveal the home's classic post-war timber facade.

Stepping inside, the home feels bright and welcoming, with generous windows, and soft natural light throughout. The central living area provides a comfortable space to unwind while the well-maintained kitchen features ample cabinetry and a dishwasher to make mealtimes easy.

Each of the three bedrooms offers comfortable proportions, plush carpets and restful hues of blue, while the bathroom presents in tidy condition, maintaining its post-war character and charm.

Outdoors, the large backyard offers endless potential; a sunny, open space perfect for barbecues, playtime, building your own gardens or future extensions (STCA). Lush greenery borders the yard, providing a sense of privacy and tranquility, while plenty of level lawn ensures easy maintenance.

Blending classic character with lifestyle convenience, 1568 Creek Road represents a rare opportunity in sought-after Carina. Whether you're looking to move straight in, lease out, or enhance over time, this inviting home promises warmth, comfort, and long-term appeal.

Contact Bailey Atherton or Karl Gillespie today to arrange your inspection or find out more about this exceptional opportunity.

All information contained herein is gathered from sources we consider to be reliable. However, we cannot guarantee or give any warranty about the information provided and interested parties must solely rely on their own enquiries.

K & Q Investments Pty Ltd with Sunnybank Districts P/L T/A LJ Hooker Property Partners
ABN 56 794 753 139/ 21 107 068 020

MORE DETAILS

Property ID	B3Q3F4R
Property Type	House
Land Area	637 m2
Including	Air Conditioning Toilets (1) Courtyard Balcony Dishwasher Secure Parking Remote Garage

Bailey Atherton 0410 724 362

Lead Agent "The Gillespie Team" | baileyatherton@ljhpp.com.au

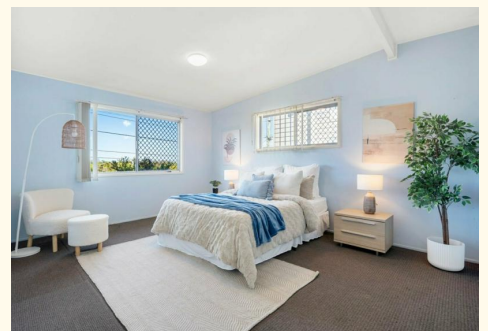
Karl Gillespie 0411 599 850

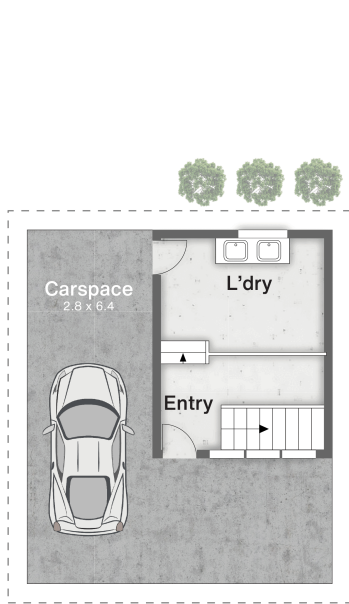
Partner & Agent/Independent Contractor | karlgillespie@ljhpp.com.au

LJ Hooker Property Partners 07 3344 0288

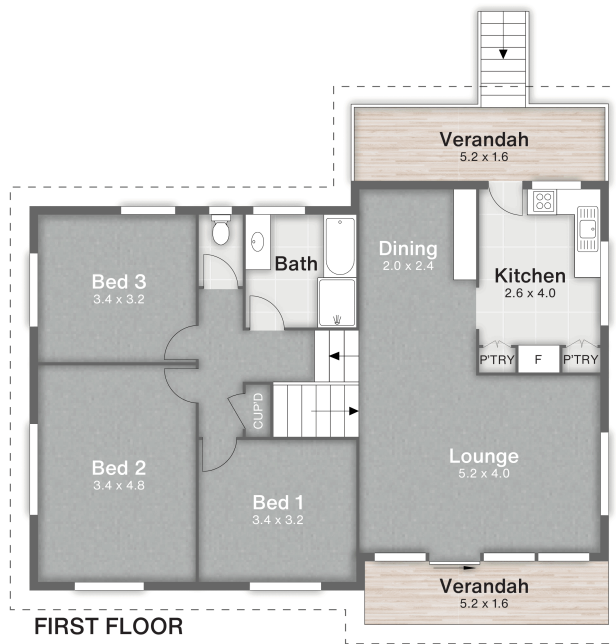
25 Pinelands Road, SUNNYBANK HILLS QLD 4109

propertypartners.ljhooker.com.au | sunnybankhills@ljhpp.com.au



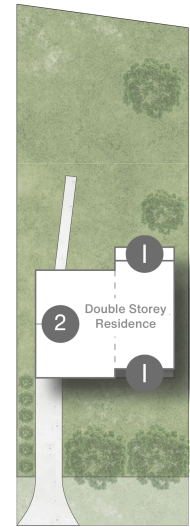


GROUND FLOOR



FIRST FLOOR

- 1 Verandah
- 2 Carspace



Creek Road



1568 Creek Road CARINA

3 | 1 | 1 | 175m² | 637m²

LJ Hooker Property Partners

All dimensions are approximate; they are subject to errors and inaccuracies and no liability will be accepted. Plans are shown for marketing purposes only.

All information contained therein is gathered from relevant third parties sources. We cannot guarantee or give any warranty about the information provided. Interested parties must rely solely on their own enquiries.

LJ Hooker