



Carey Park, 16A Palmerston Street

Carey Park Gem!

This neat and tidy 2 bedroom 1 bathroom duplex with quiet and friendly neighbours, ticks all the boxes. It's close to shopping centres, parks, schools, university, hospitals and sports grounds. Bunbury City is right on the door step. Featuring an open plan living with reverse cycle air-conditioning, bedrooms with built in robes and a huge private fully enclosed backyard with side and back patio. This home built in 1980 is a perfect starter opportunity or solid investment.

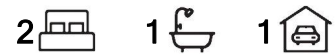
Carey Park is a vibrant suburb known for its friendly community and convenient amenities. Enjoy easy access to local parks, schools, and shopping centres, making everyday life a breeze.

FEATURES INCLUDE:

- 535m² block fully fenced
- Open plan living area



Disclaimer: All information contained therein is gathered from relevant third parties sources. We cannot guarantee or give any warranty about the information provided. Interested parties must rely solely on their own enquiries.



For Sale

Offers Over \$349,000

View

By Appointment

Contact

James O'Neill

0451 309 029

james.oneill@ljhsouthwest.com.au

LJ Hooker Property South West WA
(08) 9791 6880

- 2 spacious bedrooms with built in robes
- Bathroom with bath
- Laundry with separate WC and spacious linen cupboard
- Entertaining undercover patio, with grassed backyard
- Store room
- Location, location, location!

Estimated rental value as at 30/09/2024 - \$400-\$420 per week*

*Information derived from comparable rentals both available and leased as well as in house rental data. This information is subject to change, and we recommend getting updated independent advice.

Rates:

No Strata Fees

Council Rates: Rates:\$2,100*

Water Rates: \$1,100*

Approximate only *

Be quick for this affordable opportunity in Carey Park.

Disclaimer —whilst every care has been taken in the preparation of this advertisement and the approximate outgoings, all information supplied by the seller and the sellers agent is provided in good faith. Prospective purchasers are encouraged to make their own enquiries to satisfy themselves on all pertinent matters. Images are for illustrative purposes.

More About this Property

Property ID	16DXHND
Property Type	House
House Size	97 m ²
Land Area	535 m ²

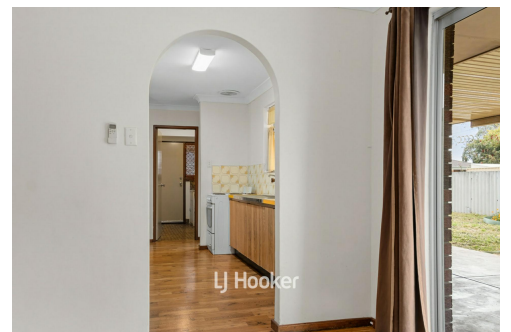
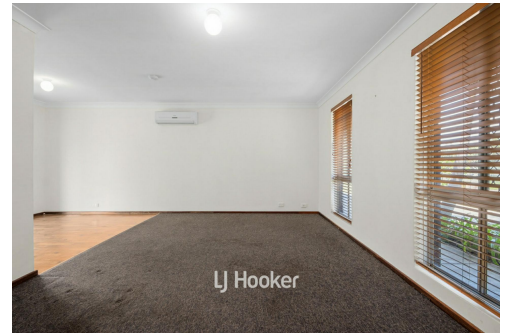
James O'Neill 0451 309 029

Sales Consultant | james.oneill@ljhsouthwest.com.au

LJ Hooker Property South West WA (08) 9791 6880

130 Victoria Street, BUNBURY WA 6230

southwestwa.ljhooker.com.au | bunbury@ljhsouthwest.com.au



Disclaimer: All information contained therein is gathered from relevant third parties sources. We cannot guarantee or give any warranty about the information provided. Interested parties must rely solely on their own enquiries.

**LJ Hooker Property South West WA
(08) 9791 6880**