

Carey Park, 10 Cingalese Close

IT'S GOT THE LOT!

Tucked away in a quiet cul-de-sac, this well-presented home offers a comfortable and practical layout with modern updates and great outdoor space. With multiple living areas, a secure backyard, and a powered workshop, it's a fantastic option for families, first-home buyers, or investors.

The renovated U-shaped kitchen provides plenty of storage, space for a plumbed fridge, and an open-plan dining area, creating a great central hub for the home. French doors open out to a spacious 6m x 6m domed patio, ideal for relaxing or entertaining, while the 6m x 6m Colorbond powered workshop and side access offer excellent storage and workspace.

Key Features Include:

- 4 bedrooms, 2 bathrooms
- Large master bedroom with a beautifully renovated ensuite



Disclaimer: All information contained therein is gathered from relevant third parties sources. We cannot guarantee or give any warranty about the information provided. Interested parties must rely solely on their own enquiries.



For Sale
UNDER OFFER

View
ljhooker.com.au/17E2HND

Contact
Rebecca Maskell
0437 085 992
rebecca.maskell@ljhsouthwest.com.au

LJ Hooker Property South West WA
(08) 9791 6880

- Three additional bedrooms, all with built-in robes, and a secondary bathroom
- Renovated U-shaped kitchen with plenty of cupboard space, quality fittings, and room for a plumbed fridge
- Spacious sunken lounge with a study nook, plus a separate reception room
- Three split-system air conditioning units for year-round comfort
- 6m x 6m domed patio, perfect for hosting family and friends
- Single garage plus side access through double gates to a 6m x 6m Colorbond powered workshop
- Close to the hospital, university, and TAFE, offering everyday convenience

A warm and inviting home in a fantastic location-don't miss this opportunity! Enquire today to arrange a viewing.

Disclaimer: Whilst every care has been taken in the preparation of this advertisement and the approximate outgoings, all information supplied by the seller and the seller's agent is provided in good faith. Prospective purchasers are encouraged to make their own enquiries to satisfy themselves on all pertinent matters. Images are for illustrative purposes.

More About this Property

Property ID	17E2HND
Property Type	House
Land Area	693 m2

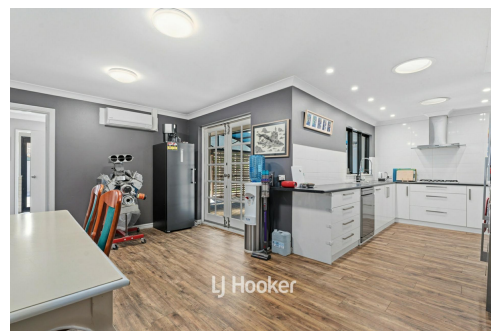
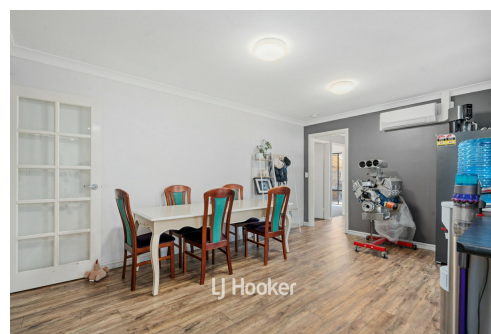
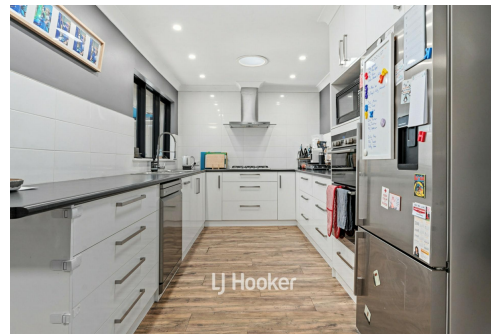
Rebecca Maskell 0437 085 992

Sales Consultant | rebecca.maskell@ljhsouthwest.com.au

LJ Hooker Property South West WA (08) 9791 6880

130 Victoria Street, BUNBURY WA 6230

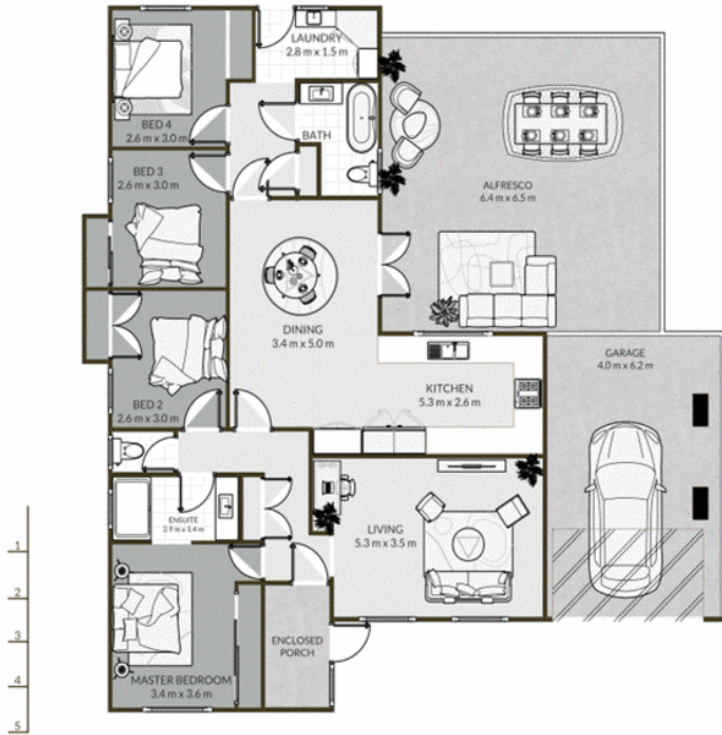
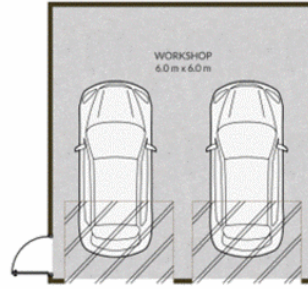
southwestwa.ljhooker.com.au | bunbury@ljhsouthwest.com.au



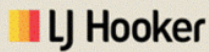
Disclaimer: All information contained therein is gathered from relevant third parties sources.

We cannot guarantee or give any warranty about the information provided. Interested parties must rely solely on their own enquiries.

**LJ Hooker Property South West WA
(08) 9791 6880**



REBECCA MASKELL
0437 085 992



10 CINGALASE CLOSE, CAREY PARK



TOTAL: 227m2

THIS FLOOR PLAN HAS BEEN PREPARED BY EVENTUALLY CREATIVE. WHILE ALL MEASUREMENTS ARE CONSIDERED RELIABLE, THEY ARE NOT GUARANTEED AND SHOULD BE INDEPENDENTLY VERIFIED. THIS FLOOR PLAN IS COPYRIGHT PROTECTED AND CANNOT BE REPRODUCED, MODIFIED, OR USED WITHOUT THE PERMISSION OF EVENTUALLY CREATIVE.

