

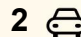




42 Kennedy Drive, Capalaba

3  1  2 

Charming High-set home with endless potential

Offered to the Market for the First time !

Discover the perfect blend of comfort, convenience, and opportunity in this delightful 3-bedroom, 1-bathroom high-set home, nestled in the heart of Capalaba. With 2-car accommodation and a host of appealing features, this property is ideal for families, first-home buyers, or savvy investors looking to add value.

Highlights:

- **Spacious & Versatile Layout:** This high-set home boasts 3 generous bedrooms and a well-appointed bathroom, offering ample space for family living.
- **Entertainer's Delight:** Step out from the kitchen onto a large deck, perfect for BBQs, morning coffees, or relaxing with loved ones while overlooking the leafy, healthy-sized backyard.
- **Room to Grow:** The expansive backyard with side access provides plenty of space for kids, pets, or even a pool, while offering potential for future enhancements.

FOR SALE
\$949,000+

AGENTS

Jimmy Regan
0412 941 716
jregan@ljhpropertycentre.com.au

Shane Kelsey
0407 280 079
skelsey@ljhpropertycentre.com.au

AGENCY

LJ Hooker Property Centre
(07) 3286 2500

All information contained therein is gathered from relevant third parties sources.
We cannot guarantee or give any warranty about the information provided.
Interested parties must rely solely on their own enquiries.

 **LJ Hooker**

- " Multipurpose Area Downstairs: A versatile space downstairs awaits your vision —think home office, gym, rumpus room, or extra storage.
- Prime Location: Conveniently located close to schools, shops, and parklands, with everything Capalaba has to offer right at your doorstep.
- Add Your Touch: This home presents a fantastic opportunity to renovate or personalize, increasing its value and making it truly yours.

Lifestyle & Location: Situated in the vibrant heart of Capalaba, 42 Kennedy Dr combines suburban tranquillity with urban convenience. Enjoy easy access to quality schools, bustling shopping precincts, and scenic parklands, making it perfect for families or those seeking a connected lifestyle.

Don't miss this rare chance to secure a high-set gem with incredible potential in a sought-after location. Contact us today to arrange an inspection and start envisioning your future

Disclaimer: We have in preparing this advertisement used our best endeavours to ensure the information contained is true and accurate but make no representation or warranty as to the accuracy or completeness of the information relating to this property. Prospective purchasers should make their own enquiries in respect of any property or information in this advertisement. We accept no responsibility and disclaim all liability in respect to any errors, omissions, inaccuracies, or misstatements contained therein.

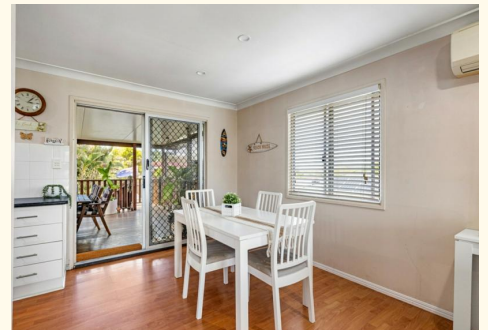
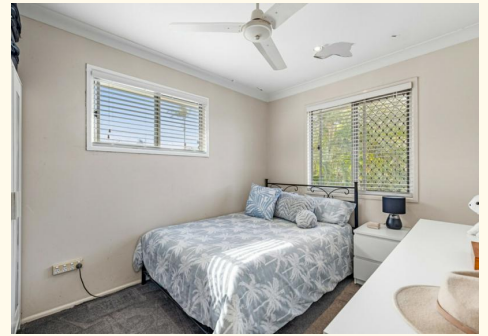
Note: This property is being sold without a price and therefore a price guide cannot be provided. The website may have filtered the property into a price bracket for website functionality purposes only.

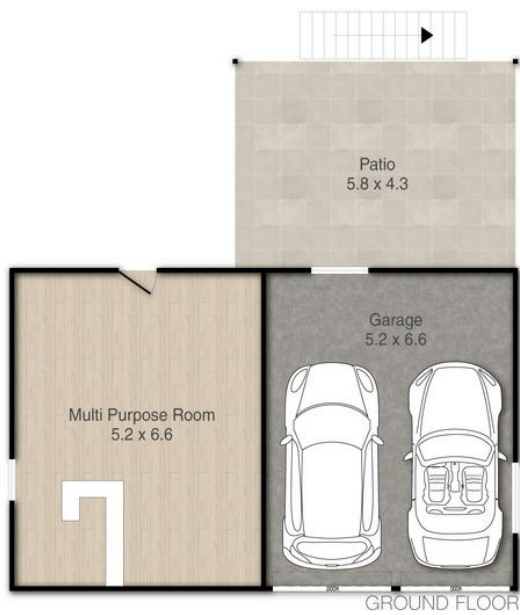
MORE DETAILS

Property ID	BTPWF2S
Property Type	House
Land Area	612 m2
Including	Deck

Jimmy Regan 0412 941 716
 Independent Contractor â€“ Jimmy Regan Real Estate Pty Ltd |
 jregan@ljhpropertycentre.com.au
Shane Kelsey 0407 280 079
 Sales Agent | skelsey@ljhpropertycentre.com.au

LJ Hooker Property Centre (07) 3286 2500
 152-164 Shore St West, Raby Bay, Brisbane Qld 4163
 propertycentre.ljhooker.com.au | hello@ljhpc.com.au





42 Kennedy Drive, Capalaba

Covered Area: 207m²

PLEASE NOTE THIS PLAN IS FOR MARKETING PURPOSES AND IS TO BE USED AS A GUIDE ONLY. ALL MARKINGS, MEASUREMENTS, AREAS, AND LAYOUT ARE INDICATIVE ONLY AND INTERESTED PARTIES SHOULD MAKE THEIR OWN ENQUIRIES BEFORE MAKING ANY DECISIONS. FLOOR COVERINGS INDICATED ARE FOR ILLUSTRATIVE PURPOSES ONLY AND MAY NOT ACCURATELY PORTRAY ACTUAL FLOOR COVERINGS OF THE PROPERTY. NO GUARANTEES ARE MADE REGARDING THE INFORMATION CONTAINED IN THIS PLAN AND NO LIABILITY FOR ANY INACCURACIES IS ACCEPTED.