







**SOLD**



## Capalaba, 1607/58 Mount Cotton Road

Under Contract

2  2  1  1 

Welcome to this modern 2-bedroom, 2-bathroom apartment, located on the top floor (Level 6) of a sought-after complex built in 2019. Offering generous room sizes, sleek contemporary finishes, and resort-style facilities, this apartment is the perfect blend of comfort and convenience.

Step inside and be impressed by the expansive open-plan living and dining area, filled with natural light and designed for effortless living. The modern kitchen boasts quality appliances, ample storage, and stylish stone benchtops, making meal preparation a pleasure.

The two oversized bedrooms are a standout feature, providing ample space for relaxation. The master suite includes a private ensuite, while the second bathroom is well-appointed to accommodate guests or housemates.

**For Sale**  
\$620,000+

---

**View**  
[ljhooker.com.au/BT30F2S](http://ljhooker.com.au/BT30F2S)

**Contact**  
**Chris Cover**  
0450 873 117  
[ccover@ljhpropertycentre.com.au](mailto:ccover@ljhpropertycentre.com.au)



**LJ Hooker Property Centre**  
**(07) 3286 2500**

**Disclaimer:** All information contained therein is gathered from relevant third parties sources. We cannot guarantee or give any warranty about the information provided. Interested parties must rely solely on their own enquiries.

A true highlight of this apartment is the spacious balcony, offering pleasant views-the perfect spot to enjoy your morning coffee, entertain guests, or simply unwind after a long day.

With lift access, a secure car space, and a beautifully maintained swimming pool, this residence offers the ultimate in convenience and lifestyle.

#### Property Features:

- \*Top-floor apartment (Level 6) with scenic views
- \*Two oversized bedrooms with ample storage
- \*Two stylish bathrooms, including a master ensuite
- \*Modern kitchen with quality appliances and stone benchtops
- \*Open-plan living and dining area with abundant natural light
- \*Spacious balcony with relaxing views
- \*Secure car space and lift access
- \*Resort-style complex with a swimming pool

#### Prime Location & Lifestyle:

Situated in a prime location, this apartment offers easy access to shopping, dining, and public transport, making it ideal for professionals, couples, or investors. Enjoy nearby parks, cafes, and entertainment options, all while living in a modern, low-maintenance home.

This is a rare opportunity to secure a spacious, top-floor apartment in a well-maintained complex with premium facilities. Don't miss out, I look forward to seeing you at the open homes!

#### Nearby Amenities:

- \*Capalaba Park Shopping Centre —1 Min
- \*Capalaba Central Shopping Centre —2 Min
- \*Capalaba State College —3 Min
- \*Goodstart Early Learning Centre —2 Min
- \*Sheldon College —12 Min
- \*Ormiston College —14 Min
- \*Brisbane Airport —22 Min
- \*Brisbane City —27 Min



**LJ Hooker Property Centre**  
**(07) 3286 2500**

**Disclaimer:** All information contained therein is gathered from relevant third parties sources. We cannot guarantee or give any warranty about the information provided. Interested parties must rely solely on their own enquiries.

## More About this Property

<b>Property ID</b>	BT30F2S
<b>Property Type</b>	Apartment
<b>Land Area</b>	104 m2
<b>Including</b>	Pool Balcony

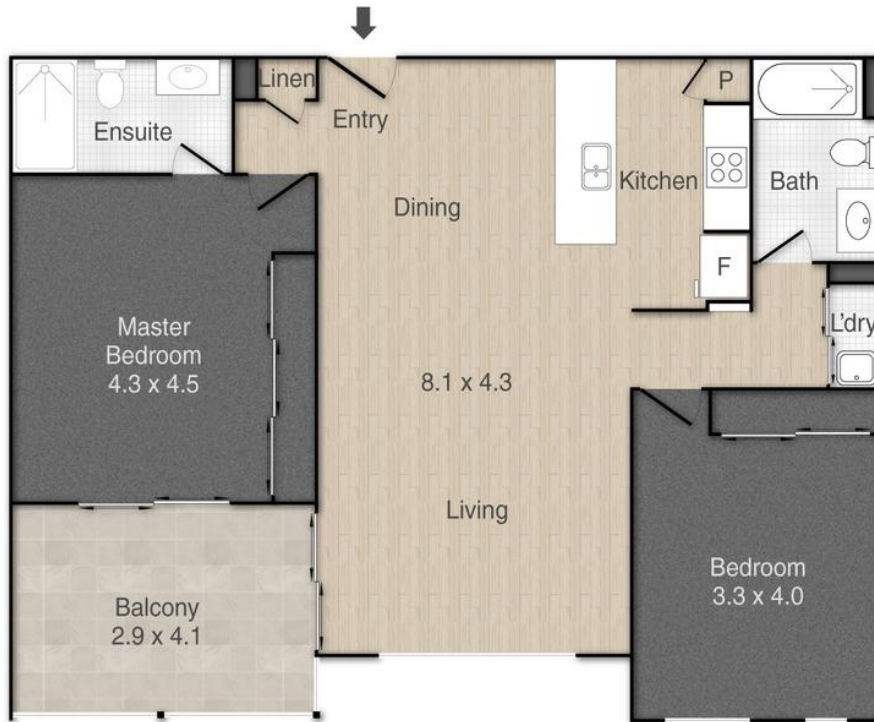
**Chris Cover 0450 873 117**  
Sales Agent | [ccover@ljhpropertycentre.com.au](mailto:ccover@ljhpropertycentre.com.au)

**LJ Hooker Property Centre (07) 3286 2500**  
152-164 Shore St West, Raby Bay, Brisbane Qld 4163  
[propertycentre.ljhooker.com.au](http://propertycentre.ljhooker.com.au) | [hello@ljhpc.com.au](mailto:hello@ljhpc.com.au)



**Disclaimer:** All information contained therein is gathered from relevant third parties sources. We cannot guarantee or give any warranty about the information provided. Interested parties must rely solely on their own enquiries.

**LJ Hooker Property Centre**  
**(07) 3286 2500**



1607/58 Mount Cotton Road, Capalaba

PLEASE NOTE THIS PLAN IS FOR MARKETING PURPOSES AND IS TO BE USED AS A GUIDE ONLY. ALL MARKINGS, MEASUREMENTS, AREAS, AND LAYOUT ARE INDICATIVE ONLY AND INTERESTED PARTIES SHOULD MAKE THEIR OWN ENQUIRIES BEFORE MAKING ANY DECISIONS. FLOOR COVERINGS INDICATED ARE FOR ILLUSTRATIVE PURPOSES ONLY AND MAY NOT ACCURATELY PORTRAY ACTUAL FLOOR COVERINGS OF THE PROPERTY. NO GUARANTEES ARE MADE REGARDING THE INFORMATION CONTAINED IN THIS PLAN AND NO LIABILITY FOR ANY INACCURACIES IS ACCEPTED.