



Capalaba, 309 Mount Cotton Road

Acreage Grandeur, endless potential

Auction Location: On Site

Welcome to one of Capalaba's most exclusive acreage opportunities, perfectly positioned at 309 Mount Cotton Road. Set on a sprawling parcel of prime land, this property offers exceptional future development potential while maintaining the tranquillity and privacy of a rural retreat. Enjoy the serenity of open space and leafy surroundings, all while being just minutes from Capalaba Central Shopping Centre, top-tier local schools, and less than 30 minutes from Brisbane CBD. With the area seeing increased residential and infrastructure growth, this is a rare chance to secure a valuable slice of Redlands land in an unbeatable location.

This magnificent two-storey brick home, constructed in 1979 stands as a timeless testament to quality craftsmanship and expansive design. One of the largest acreage residences currently on the market, it offers unparalleled space and versatility across its

5

3

7

Auction
Sat 31st May @ 4:00PM

View
Sat 10th May @ 10:00AM - 10:30AM

Contact
Jimmy Regan
0412 941 716
jregan@ljhpropertycentre.com.au
Shane Kelsey
0407 280 079
skelsey@ljhpropertycentre.com.au



Disclaimer: All information contained therein is gathered from relevant third parties sources. We cannot guarantee or give any warranty about the information provided. Interested parties must rely solely on their own enquiries.

LJ Hooker Property Centre
(07) 3286 2500

substantial floorplan. Featuring five generous bedrooms plus a separate study, three bathrooms, and dual kitchens-ideal for multi-generational living or dual occupancy potential-the home provides comfort, style, and scale. With accommodation for six vehicles and vast internal living zones, this property is the ultimate acreage haven for families, investors, or those seeking lifestyle without compromise. This is a once-in-a-generation offering that captures the essence of Queensland acreage living.

Property Highlights:

- Massive two-storey brick home built in 1979
- One of the largest acreage homes currently on the market in Capalaba
- 5 spacious bedrooms plus dedicated study/home office
- 3 bathrooms thoughtfully positioned throughout the home
- 2 kitchens —perfect for extended family or dual living
- 6car+ accommodation with ample room for boats, trailers, or a home workshop
- Expansive acreage block with future development potential (STCA)
- Peaceful and private setting surrounded by nature
- Minutes to Capalaba Central Shopping Centre, major schools, and public transport
- Under 30 minutes to Brisbane CBD —enjoy rural living with city convenience
- Ideal for multi-generational families, investors, or acreage lifestyle seekers

All information contained herein is gathered from sources we consider to be reliable. However, we cannot guarantee or give any warranty about the information provided. Interested parties must solely rely on their own enquiries.

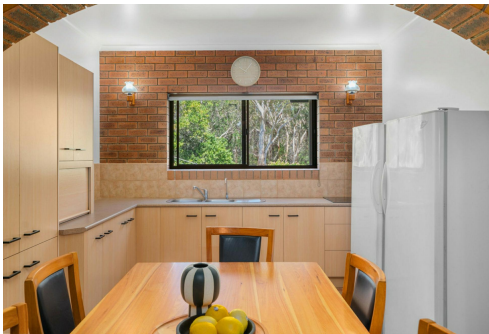
Note: This property is being sold by auction and therefore a price guide cannot be provided. The website may have filtered the property into a price bracket for website functionality purposes only.

More About this Property

Property ID	BT6YF2S
Property Type	AcreageSemi-rural
Land Area	1.11 hectare

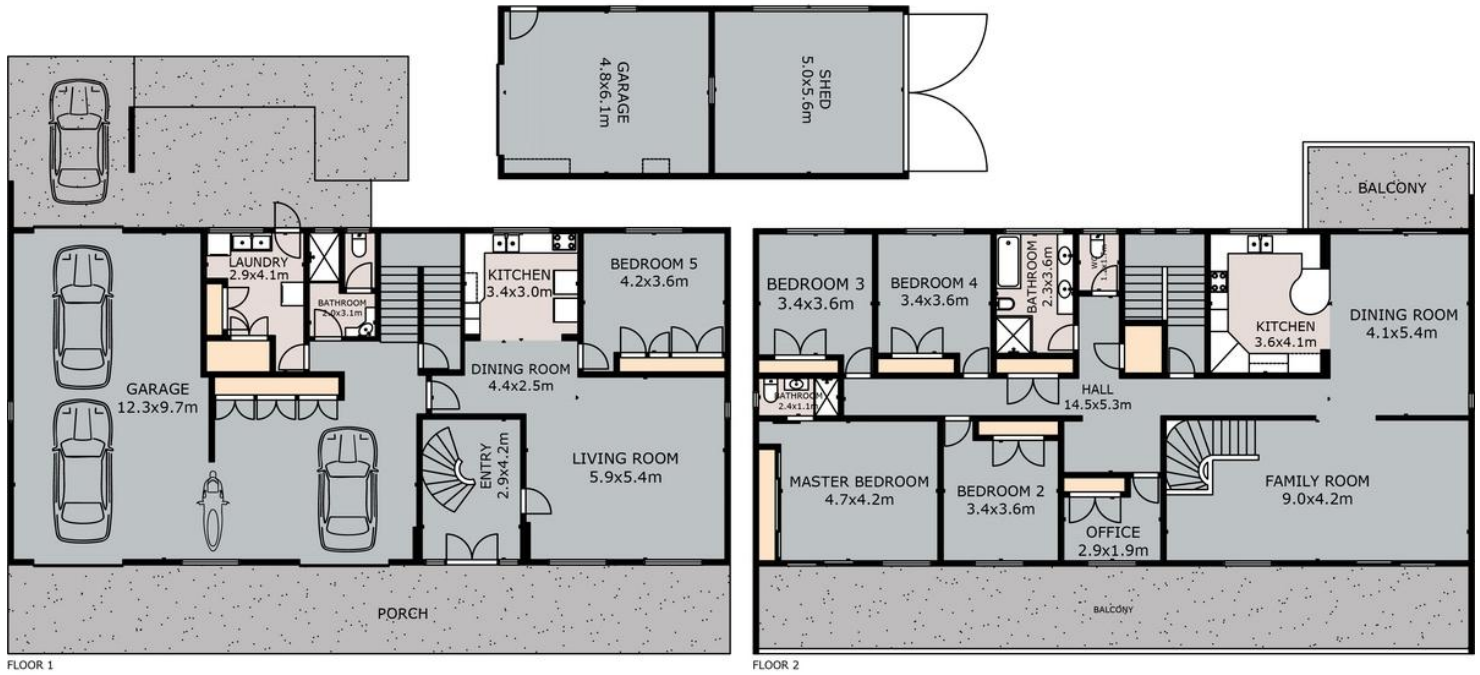
Jimmy Regan 0412 941 716
Independent Contractor “ Jimmy Regan Real Estate Pty Ltd |
jregan@ljhpropertycentre.com.au
Shane Kelsey 0407 280 079
Sales Agent | skelsey@ljhpropertycentre.com.au

LJ Hooker Property Centre (07) 3286 2500
152-164 Shore St West, Raby Bay, Brisbane Qld 4163
propertycentre.ljhooker.com.au | hello@ljhpc.com.au



Disclaimer: All information contained therein is gathered from relevant third parties sources. We cannot guarantee or give any warranty about the information provided. Interested parties must rely solely on their own enquiries.

LJ Hooker Property Centre
(07) 3286 2500



309 Mount Cotton Road, Capalaba

Whilst every attempt has been made to ensure the accuracy of the floor plan contained here, measurements of doors, windows, rooms and any other items are approximate and no responsibility is taken for any error, omission, or misstatement. This plan is for illustrative purposes only and should be used as such by any prospective purchaser.