

169 Lamington National Park Road, Canungra

4 🏠 2 🚗 10 🚗

Wake Up to Panoramic Hinterland Views! —A Private Queenslander Retreat on 5+ Acres

FOR SALE
EXPRESSIONS OF INTEREST

VIEW
By Appointment

AGENTS
Debbie Taylor
0400 086 228
dtaylor@ljhgc.com.au

AGENCY
LJ Hooker Nerang
(07) 5581 4422

How often do you come across an acreage property within 23 minutes walking distance to Canungra Village? (2 minute drive)

Wake up to rolling green hills, fresh mountain air and the peaceful sounds of nature from your own private slice of paradise in the heart of Canungra.

Positioned well back from the road on over 2 hectares. This immaculate character-filled Queenslander delivers the lifestyle so many dream about but few ever find. Surrounded by breathtaking 360-degree hinterland and mountain views, this is a property where every sunset feels magical and every day feels like a retreat.

Whether you're searching for the perfect hobby farm, an equine lifestyle property, space for the family to roam, or simply an escape from the hustle while still remaining connected to everything you

All information contained therein is gathered from relevant third parties sources. We cannot guarantee or give any warranty about the information provided. Interested parties must rely solely on their own enquiries.

 **LJ Hooker**

need - this exceptional home offers the complete package.

Only minutes from the charming Canungra village, you'll enjoy cafés, markets, boutique shopping, local schools, the country pub, IGA, local butcher, chemist and more, all while being just 20 minutes to Nerang, the M1 and the Gold Coast.

This is hinterland living at its absolute finest.

HOME FEATURES

Beautifully presented character Queenslander filled with warmth and charm

Polished original hardwood timber flooring throughout

- Bright modern farmhouse kitchen/dining room with Caesarstone benchtops, soft-close cabinetry, large pantry and double country farmhouse sink
- Stunning mountain views directly from the kitchen window
- Kitchen/dining area opening seamlessly onto the verandah
- Huge front lounge featuring wood-burning fireplace, reverse-cycle air conditioning and sliding doors to verandah
- 4 Bedrooms
- Spacious master retreat with walk-in robe, ensuite and air conditioning
- Additional bedrooms with built-in robes and ceiling fans
- Fourth bedroom with direct verandah access
- Stylish family bathroom with luxurious freestanding clawfoot bathtub and skylight
- Separate laundry with external access
- Additional versatile multipurpose rooms: ideal as a games room, home office, studio or guest retreat complete with bar area (easily converted to granny flat/ensuite or separate office & Laundry)
- Expansive covered patio with insulated roofing and breathtaking uninterrupted hinterland views
- Fully screened doors and windows throughout
- Front and side verandahs overlooking the property, stables and spectacular mountain ranges
- Large under-house storage areas plus fully lined pet retreat (tiled room with windows & custom curtains)

PROPERTY FEATURES

Fully fenced 5+ acre hobby farm with 5 separate paddocks

Equine-ready with stables, round yard/veggie garden

Hay shed

Chicken coop with enclosed run

Bird aviary

Large fully lined 9m x 15m powered shed with 15-amp single phase power - ideal for machinery, vehicles, workshop or storage

- car carport

Fully concreted driveway with automatic gated entrance

Council Rates:

Approx. \$1,816 bi-annually

No Water Rates:

3 substantial rainwater tanks PLUS septic tanks

- 30,000 Litre Concrete
- 22,500 Litre
- 12,500 Litre

Peaceful, private setting surrounded by nature and wildlife
YOUR TREE-CHANGE STARTS HERE

- This property has been very loved and continuously updated by the current owners *

Properties offering this level of presentation, privacy, infrastructure and breathtaking scenery are incredibly hard to find - especially this close to the Gold Coast.

If you've been searching for a lifestyle property where you can truly slow down, breathe deeply and "live the dream," this extraordinary Canungra retreat is one you simply cannot miss.

Call Debbie to view: 0400086228

Things to See & Do in Canungra:

Tucked away in the beautiful Gold Coast hinterland, Canungra offers a relaxed country atmosphere surrounded by rainforest, mountains, and rolling farmland.

Explore Lamington National Park

Canungra serves as a popular starting point for visits to the renowned rainforest retreats of Binna Burra Lodge and O'Reilly's Rainforest Retreat.

From here, visitors can discover scenic walking trails, waterfalls, panoramic lookouts, and ancient subtropical rainforest.

Relax at O'Reilly's Canungra Valley Vineyards

- Enjoy a laid-back day by the creek with wine tasting, gourmet picnic hampers, and picturesque vineyard views. The vineyard is also well known for its friendly alpacas, making it a favourite stop for families and couples.

Adventure & Nature

With its rugged landscapes and open countryside, the area is ideal for outdoor activities including:

- Bushwalking and hiking
- Horse riding
- Hang-gliding and paragliding
- Scenic countryside drives
- Discover Local History

Canungra's timber-milling heritage can still be seen throughout the region. Visit landmarks such as St Luke's Church and explore the historic Lahey Tramway Tunnel, carved by hand during the early logging era.

Country Dining & Local Shops

Stop in for a classic pub meal at Canungra Hotel or wander through the town centre to browse boutique stores, cafés, galleries, and locally made products.

Located approximately 32 kilometres west of the Gold Coast and 75 kilometres south of Brisbane.

Positioned at the heart of several well-known tourist attractions, the town serves as a gateway to the Gold Coast hinterland.

The area is popular with a wide range of outdoor enthusiasts, attracting motorcycle touring groups, hang gliders, paragliders, birdwatchers and bushwalkers throughout the year who come to experience the natural beauty of the Canungra Valley.

The town also hosts an annual rodeo each July, which is a longstanding local tradition.

Canungra State School provides government primary education for students from Prep to Year 6. The locality also features several recreational areas, including D J Smith Park and Moriarty Park. Moriarty Park functions as a community sporting hub, offering facilities for activities such as tennis, soccer, cricket, swimming, netball, taekwondo, yoga, dog sports and hang gliding, with the grounds and hall available for community hire and events.

Disclaimer: Properties in Queensland that are for sale by auction or without a price can not have a price guide provided, unless specified in writing from the seller. This website may have filtered the property into a price bracket for website functionality purposes.

MORE DETAILS

Property ID	5J0UF41
Property Type	AcreageSemi-rural
House Size	370 m2
Land Area	2.03 hectare
Including	Ensuite Air Conditioning Balcony Outdoor Entertaining Floorboards Built-in-Robes Fully Fenced Water Tank

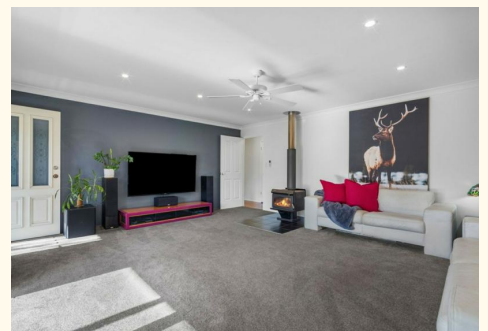
Debbie Taylor 0400 086 228

Sales Specialist | dtaylor@ljhg.com.au

LJ Hooker Nerang (07) 5581 4422

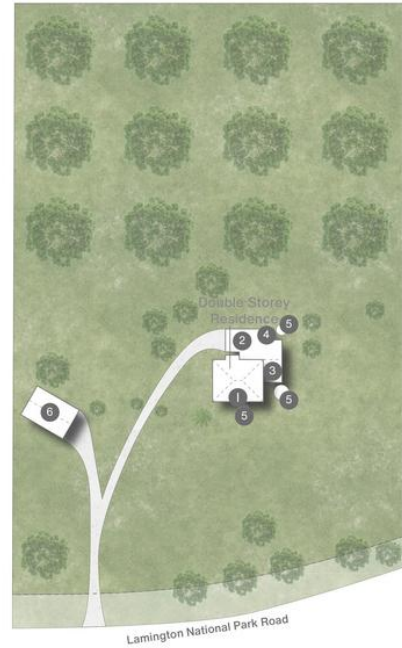
2-4 New Street, NERANG QLD 4211

nerang.ljhooker.com.au | nerang@ljhg.com.au





- 1 Deck
- 2 Carport
- 3 Patio
- 4 Storage
- 5 Water Tank
- 6 Shed



169 Lamington National Park Road **CANUNGRA**

4 | 2 | 10 | 370m² | 2.03ha



DISCLAIMER
 This is not a legal document; all measurements and dimensions are approximate and are subject to errors, omission or misstatement. No liability will be accepted. Plans are shown for marketing purposes only.