

Cannington, 305/14 Cecil Avenue

Convenience at its best!

Strategically located in the heart of Cannington, this modern two-bedroom, two-bathroom apartment offers the best lifestyle the area has to offer.

The apartment features a spacious open-plan living area, a well-equipped kitchen and a separate dining area for easy entertaining. This area has its own split system air conditioning unit.

A super large private balcony for relaxing and entertaining friend. The two bedrooms are of outstanding sizes with the main bedroom enjoying a walk through robe and a second bedroom suitable for 2 x queen sized beds if that is what you choose.

Each bedroom has its own air conditioning system as well

2nd bathroom and combined laundry area with abundant storage

Internal storage room suitcases and things you don't normally have spaces for in an



For Sale
Under Offer

View
ljhooker.com.au/5FEPFFB

Contact
Diane Sheppard
0420 216 066
diane.sheppard@ljhvicpark.com.au
Michael Sheppard
0433 275 080
michael.sheppard@ljhvicpark.com.au



Disclaimer: All information contained therein is gathered from relevant third parties sources. We cannot guarantee or give any warranty about the information provided. Interested parties must rely solely on their own enquiries.

LJ Hooker Victoria Park | Belmont
(WA)
(08) 9473 7777

apartment

This secure complex also includes a designated car bay, and a storage unit right next to the car bay adding convenience and peace of mind.

With Westfield Carousel entertainment and shopping directly across the road; easy access to public transport and walking distance to the Canning River conservation wetlands —you will have no shortage of things to do and explore!

Key Features:

3 x reverse cycle air conditioners

Spacious bedrooms

Designated car bay

Separate storeroom

Dishwasher and fridge included

Washing machine/dryer combo included

Outstanding common facilities including dining room, BBQ and rooftop deck

More About this Property

Property ID	5FEPFFB
Property Type	Unit
Including	Air Conditioning Car Parking - Basement

Diane Sheppard 0420 216 066

Real Estate and Business Agent | diane.sheppard@ljhvicpark.com.au

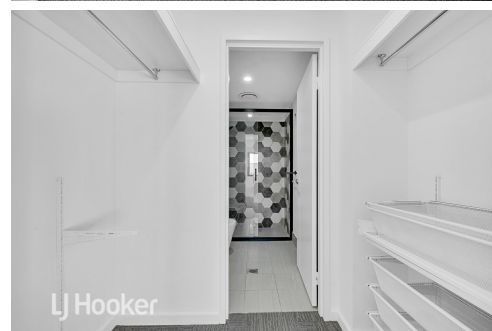
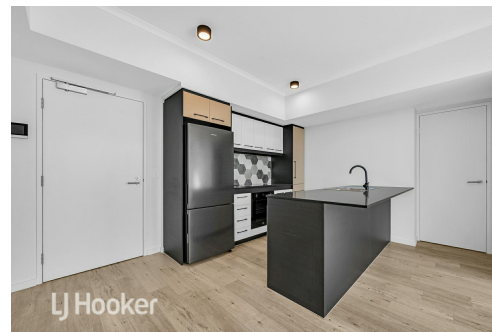
Michael Sheppard 0433 275 080

Sales Consultant | michael.sheppard@ljhvicpark.com.au

LJ Hooker Victoria Park | Belmont (WA) (08) 9473 7777

288 Albany Highway, VICTORIA PARK WA 6100

victoriapark-belmontwa.ljhooker.com.au | reception@ljhvicpark.com.au



Disclaimer: All information contained therein is gathered from relevant third parties sources.

We cannot guarantee or give any warranty about the information provided. Interested parties must rely solely on their own enquiries.

**LJ Hooker Victoria Park | Belmont
(WA)
(08) 9473 7777**