



26a Mittiamo Street, Canley Heights

## Modern Family Living in a Prime Location


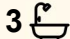
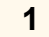
Welcome to this beautifully presented home offering the perfect combination of space, comfort, and convenience in the heart of Canley Heights.

Property Features:

- 4 generous bedrooms
- 3 modern bathrooms
- 1 secure car space
- Spacious open-plan living and dining areas
- Stylish kitchen with quality finishes
- Ideal for families or investors
- Low-maintenance lifestyle living

Located in a highly sought-after pocket of Canley Heights, this property offers exceptional access to local schools, shopping centres, popular dining options, parks, and public transport. Enjoy the convenience of having everything you need just moments away while living in a welcoming family-friendly neighbourhood.

Whether you are looking for your dream family home or a fantastic

4  3  1 

**FOR SALE**  
CONTACT AGENT

**VIEW**

Sat 20th Jun @ 11:00AM - 11:30AM

**AGENTS**

Joanne Huynh  
0478 932 653  
joanne.huynh@ljhooker.com.au

Ly Houy Lay  
0411 456 349  
ly.lay@ljhooker.com.au

**AGENCY**

LJ Hooker Edensor Park | Green Valley  
(02) 9823 8888

All information contained therein is gathered from relevant third parties sources.  
We cannot guarantee or give any warranty about the information provided.  
Interested parties must rely solely on their own enquiries.

 **LJ Hooker**

investment opportunity, this property is one not to be missed.

## MORE DETAILS

Property ID	CZTHUC
Property Type	Duplex Semi-detached
Including	Ensuite
	Toilets (3)

**Joanne Huynh 0478 932 653**

Senior Sales Executive | [joanne.huynh@ljhooker.com.au](mailto:joanne.huynh@ljhooker.com.au)

**Ly Houy Lay 0411 456 349**

Sales Associate | [ly.lay@ljhooker.com.au](mailto:ly.lay@ljhooker.com.au)

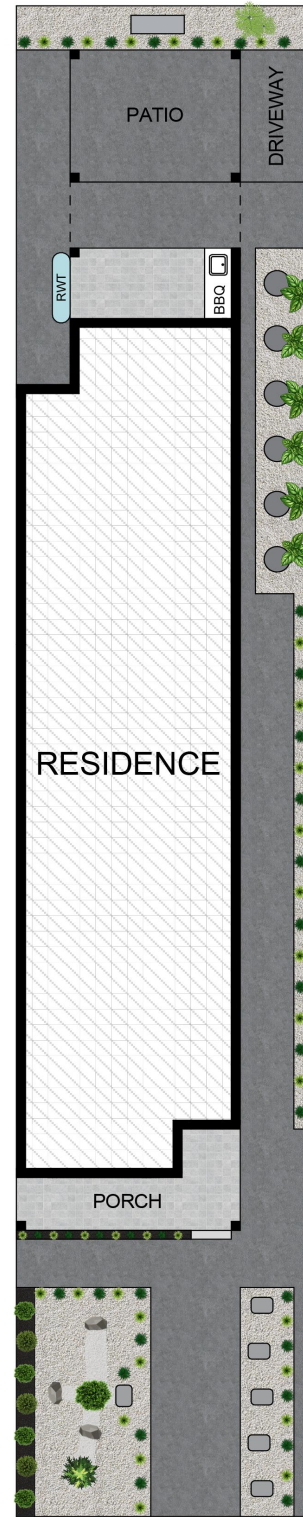
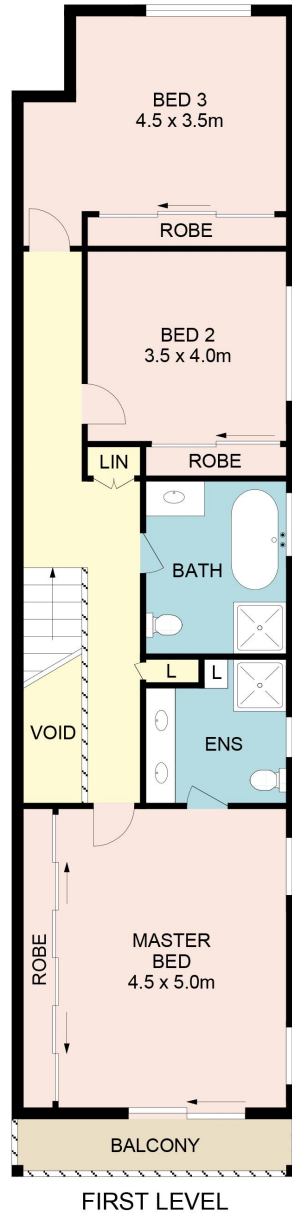
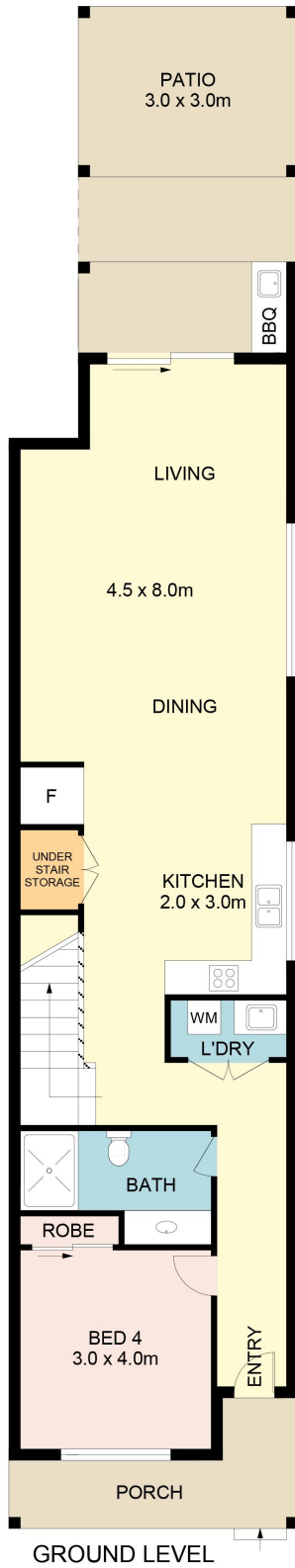
**LJ Hooker Edensor Park | Green Valley (02) 9823 8888**

Shop 8, 207-215 Edensor Road, Edensor Park Plaza, EDENSOR  
PARK NSW 2176

[edensorpark.ljhooker.com.au](http://edensorpark.ljhooker.com.au) | [edensorpark@ljhooker.com.au](mailto:edensorpark@ljhooker.com.au)



All information contained therein is gathered from relevant third parties sources.  
We cannot guarantee or give any warranty about the information provided.  
Interested parties must rely solely on their own enquiries.



SITE PLAN  
(NOT TO SCALE)



## 26A Mittiamo Street, Canley Height



**DISCLAIMER:** No liability for the accuracy of details contained within our floor plans. All plans are drawn and also checked to the best of our ability, however information contained in our floor plans such as area calculations are approximate, and have not been surveyed or drawn to scale. Our floor plans are for representational purposes only and should be used as such. Do not attempt to refer to our floor plans for structural or detailed information.

All information contained therein is gathered from relevant third parties sources. We cannot guarantee or give any warranty about the information provided. Interested parties must rely solely on their own enquiries.

