



13 Marlowe Street, Campsie

Original Home Primed for Renovation/Rebuild (stca) in Connected Campsie Pocket!

An exceptional opportunity exists on a substantial parcel of land in a highly connected Campsie address, this freestanding timber home is offered as a complete blank canvas, delivering extraordinary scope to transform or knock-down and rebuild something truly special (STCA). Original period elements including soaring ornate ceilings, timber windows and picture rails still endure, hinting at the home's former character and charm. With a traditional layout and an expansive backyard, it invites buyers with creative vision and determination to unlock its full potential in an unbeatable location. Step outside and you're just a minute stroll to Woolworths and Campsie's vibrant hub with popular eateries, the station and metro line. Campsie Public School and St Mel's Catholic Primary School are both a short walk away, and it's just minutes to Canterbury Hospital and Belmore Sports Ground.

- Dilapidated interiors primed for renovation/rebuild (STCA)
- Traditional layout with separate lounge and dining rooms
- Expansive level backyard with huge space to extend (STCA)
- Original kitchen with casual dining nook, original bathroom

3 1 2

FOR SALE

For Sale - Price Guide \$1,600,000

VIEW

Sat 20th Jun @ 10:00AM - 10:30AM

AGENTS

Peter Kassas
0404 003 320
peter@ljhcampsie.com.au

Francois Vassiliades
0400 131 415
francois@ljhcampsie.com.au

AGENCY

LJ Hooker Campsie
(02) 9789 6088

All information contained therein is gathered from relevant third parties sources. We cannot guarantee or give any warranty about the information provided. Interested parties must rely solely on their own enquiries.

LJ Hooker

- Three well-proportioned bedrooms with timber windows
- Soaring ornate ceilings, picture rails, external laundry
- 2-min stroll to Woolworths, shops, popular cafés/eateries
- Minutes' walk to Campsie's hub, the station & metro line
- Walk to Campsie Public School, St Mel's Catholic Primary
- Close to Canterbury Hospital and Belmore Sports Ground

Council Rates: \$669.00 per quarter approx.

Water Rates: \$269.00 per quarter approx.

Inspect: As Advertised or By Appointment

Details: Peter Kassas - 0404 003 320

Francois Vassiliades - 0400 131 415

DISCLAIMER: Some images may have been digitally enhanced or virtually staged for marketing purposes. While care has been taken in preparing this material, no warranty is given as to its accuracy or completeness, and no liability is accepted for any errors or omissions.

DISCLAIMER: All information provided has been gathered with due care and is believed to be reliable; however, no guarantee is made as to its accuracy. We accept no liability for any mistakes, omissions, or discrepancies. Interested parties should make their own enquiries and rely on their own investigations.

MORE DETAILS

Property ID MM2F8V
Property Type House

Peter Kassas 0404 003 320

Sales Executive | peter@ljhcampsie.com.au

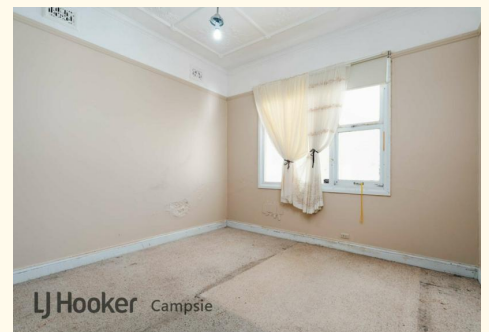
Francois Vassiliades 0400 131 415

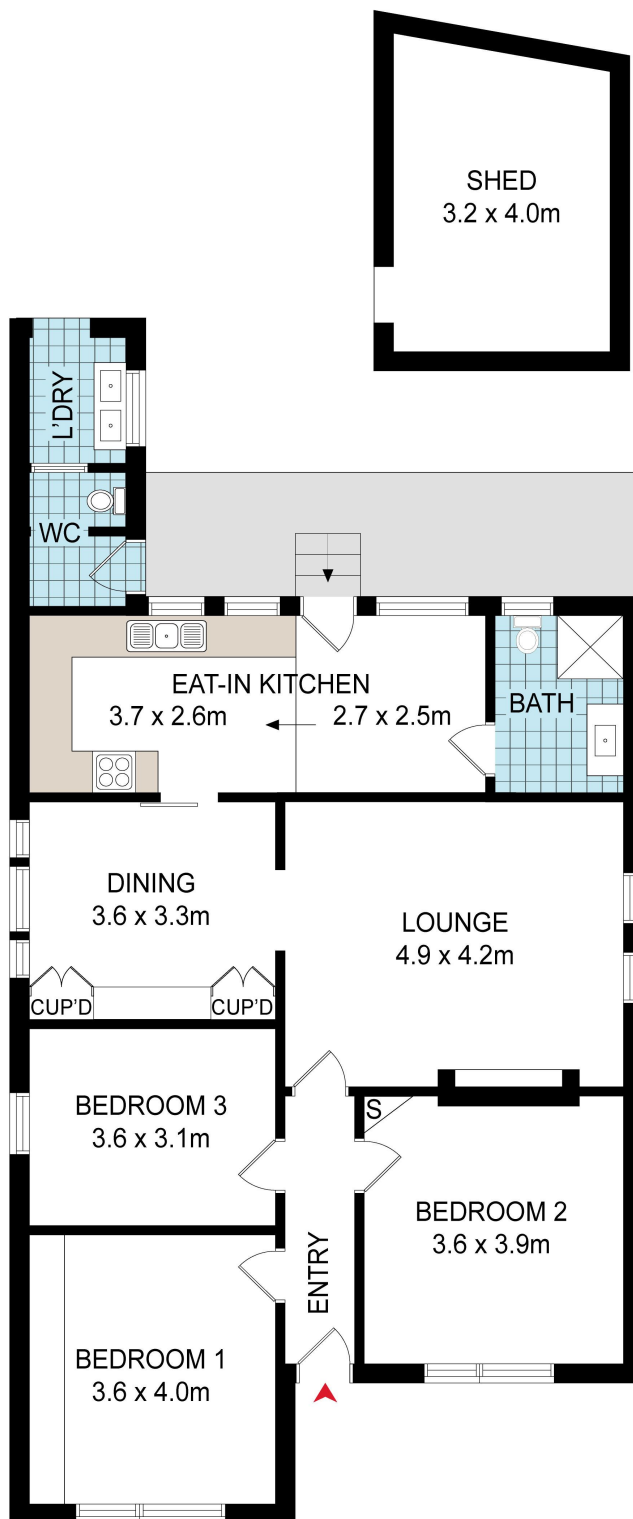
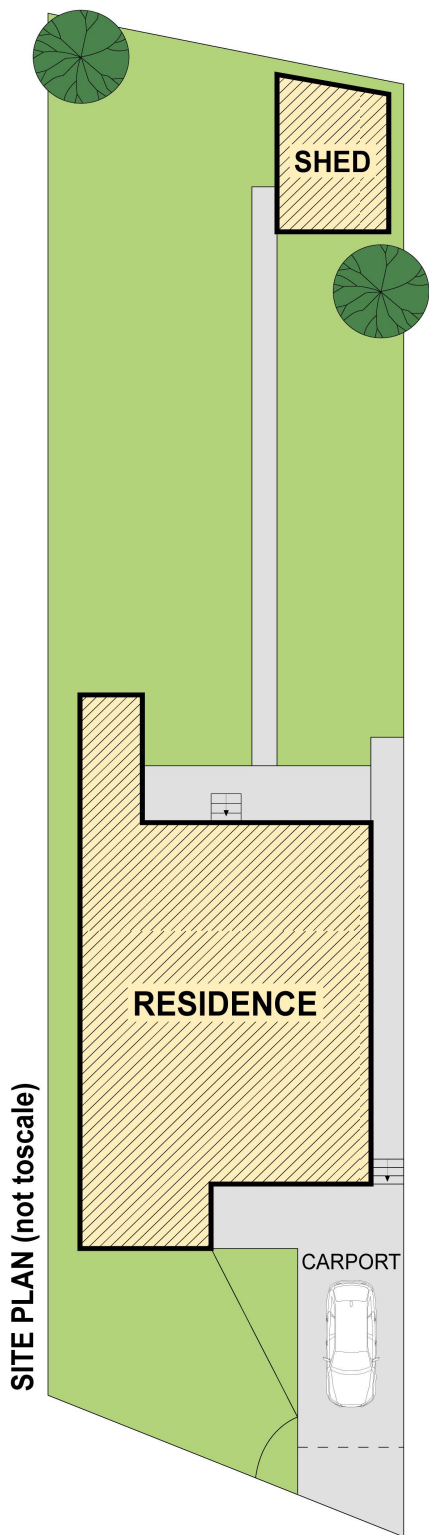
Director/Licensee | francois@ljhcampsie.com.au

LJ Hooker Campsie (02) 9789 6088

197 Beamish Street, CAMPSIE NSW 2194

campsie.ljhooker.com.au | info@ljhcampsie.com.au





13 MARLOWE STREET, CAMPSIE

DISCLAIMER: WE HAVE OBTAINED ALL INFORMATION IN THIS DOCUMENT FROM SOURCES WE BELIEVE TO BE RELIABLE; HOWEVER, WE CANNOT GUARANTEE ITS ACCURACY. PROSPECTIVE PURCHASERS ARE ADVISED TO CARRY OUT THEIR OWN INVESTIGATIONS