

## Camperdown, N105/16-20 Larkin Street

Sold by Rong You

Urban Style on the City Fringe

Located within 'The Verge' complex, a quality security complex on the city fringe, this property features sleek interiors, streamlined finishes and a focus on light and space. This north facing apartment is set in a quiet cul-de-sac in a vibrant downtown setting renowned as Sydney's arts and creative hub.

Features:

- Spacious partitioned bedroom with built-in wardrobes
- Modern kitchen with gas cooking, dishwasher, convection oven, and Caesarstone benchtops
- Sleek bathroom with a combined bathtub and shower
- Secure basement parking
- Storage cage
- Ducted air conditioning and security intercom



**Disclaimer:** All information contained therein is gathered from relevant third parties sources. We cannot guarantee or give any warranty about the information provided. Interested parties must rely solely on their own enquiries.



**For Sale**  
SOLD

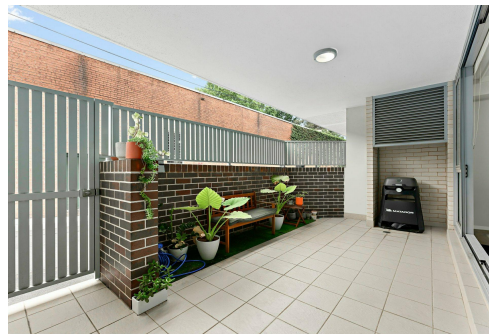
**View**  
[ljhooker.com.au/115FF8R](http://ljhooker.com.au/115FF8R)

**Contact**  
**Rong You**  
0424 433 888  
[rong@ljhburwood.com.au](mailto:rong@ljhburwood.com.au)

**LJ Hooker Burwood**  
**(02) 9745 3999**

- Internal laundry with dryer
- North facing terrace perfect for outdoor entertaining
- Private Access via 7 Sparkes Lane

Set in a highly sought-after location, just moments from RPA Hospital, Broadway Shopping Centre, University of Sydney, and the CBD. Explore the local charm with nearby parks such as Camperdown Park, Camperdown Memorial Rest Park, and O'Dea Reserve, plus an array of cafes and restaurants await along Booth Street, King Street, and Glebe Point Road.



## More About this Property

<b>Property ID</b>	115FF8R
<b>Property Type</b>	Unit
<b>Land Area</b>	88 m2

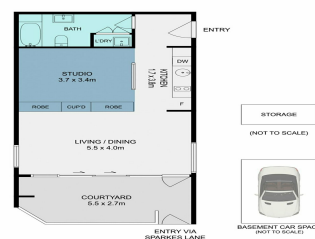
**Rong You 0424 433 888**

Sales | Licensed Real Estate Agent | [rong@ljhburwood.com.au](mailto:rong@ljhburwood.com.au)

**LJ Hooker Burwood (02) 9745 3999**

Shop 2/27-29 Burwood Road, BURWOOD NSW 2134  
[burwood.ljhooker.com.au](http://burwood.ljhooker.com.au) | [burwood@ljhburwood.com.au](mailto:burwood@ljhburwood.com.au)

LJ Hooker



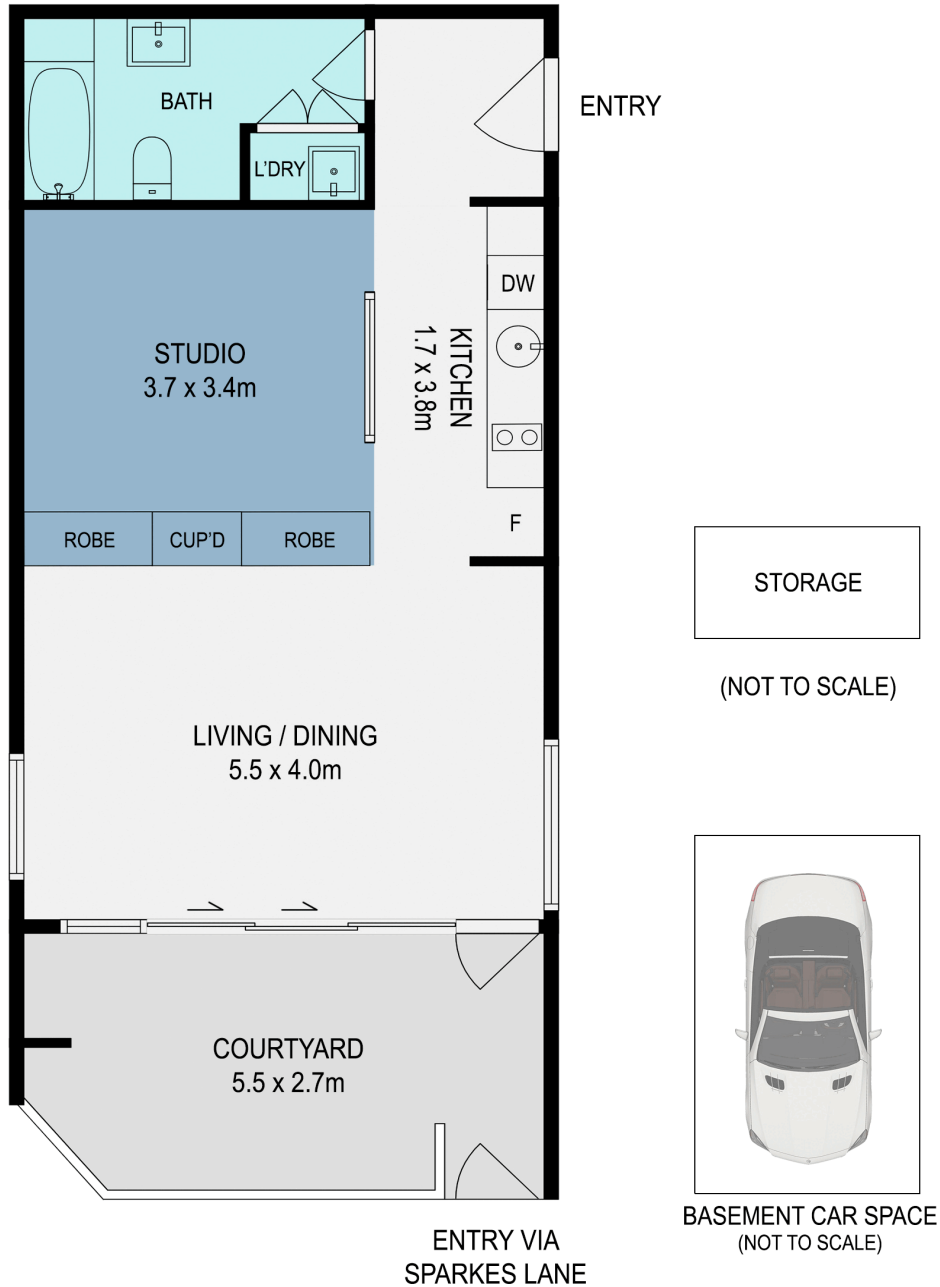
**N105/16-20 Larkin Street, Camperdown**

DISCLAIMER: THIS FLOOR PLAN IS PROVIDED AS A GUIDE ONLY. IT DOES NOT CONSTITUTE ANY OF ANY TRADING DOCUMENTS. ALL DIMENSIONS AND APPROXIMATE. ACTUAL MAY VARY. PLEASE ENQUIRE. YOU MUST SEEK ADVICE FROM YOUR SOLICITOR.



**LJ Hooker Burwood**  
**(02) 9745 3999**

**Disclaimer:** All information contained therein is gathered from relevant third parties sources. We cannot guarantee or give any warranty about the information provided. Interested parties must rely solely on their own enquiries.



N105/16-20 Larkin Street, Camperdown



DISCLAIMER: THIS FLOOR PLAN IS INTENDED AS A GUIDE ONLY. IT DOES NOT CONSTITUTE PART OF ANY LEGAL DOCUMENTS. ALL DIMENSIONS ARE APPROXIMATE, ACTUAL MAY VARY. NO LIABILITY ACCEPTED. YOU MUST SEEK ADVICE FROM YOUR SOLICITOR. FLOOR PLAN BY WWW.MCPIXELSAU.COM