



Cameron Park, 9 Nightingale Crescent

CENTRALLY LOCATED WITH NO COMPROMISE

Centrally located in sought after Cameron park is where you'll find this charming single level home with all the features and benefits one could wish for. The property boasts a modern open plan design with multiple living and dining areas surrounding the stunning new kitchen. A true entertainers delight as the house naturally flows to the covered alfresco and pool area, the perfect setup for hosting friends and family!

The home benefits from a large double garage with storage space, side vehicle access for parking trailer, boat or caravan, solar power, 4 spacious bedrooms of accommodation all with wardrobing, including the master suite with walk in and ensuite plus so much more.

This dream home seems to be moments away from everything! Including the new Cameron Park shopping centre, access to the Freeway for Sydney and Hunter Valley travel plus quality local schools and parks.



For Sale
\$895,000

View
ljhooker.com.au/Z1BF7Q

Contact
Lachlan Porter
0435 737 131
lachlan.porter@ljhooker.com.au



LJ Hooker Lake Macquarie
(02) 4915 3800

Disclaimer: All information contained therein is gathered from relevant third parties sources. We cannot guarantee or give any warranty about the information provided. Interested parties must rely solely on their own enquiries.

WHAT TO LOVE

- Modern single level floorplan
- Multiple spacious living areas
- Freshly renovated kitchen
- Large covered alfresco
- Side vehicle access
- Large double garage
- Pool
- Master suite with walk in and ensuite
- Large bedrooms with wardrobing
- Solar power
- Ducted air conditioning
- Quiet street backing onto acreage
- Established landscaping setup for low maintenance

The information contained herein has been provided by people we believe to be reliable, however all interested parties must rely on their own enquiries.

More About this Property

Property ID	Z1BF7Q
Property Type	House
Land Area	700 m ²
Including	Ensuite Air Conditioning Toilets (3) Dishwasher Built-in-Robes Carpeted Close to Schools Close to Shops Close to Transport Dining room Fenced Backyard

Lachlan Porter 0435 737 131

Sales Executive | Independent Contractor | lachlan.porter@ljhooker.com.au

LJ Hooker Lake Macquarie (02) 4915 3800

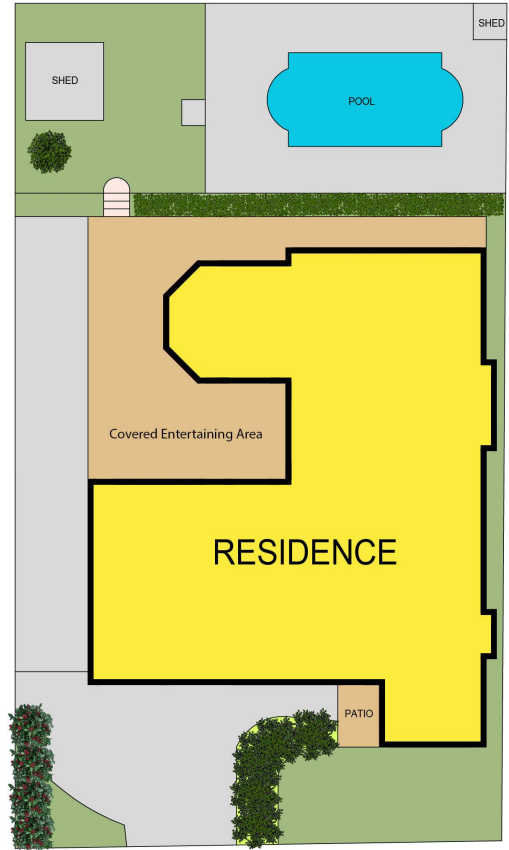
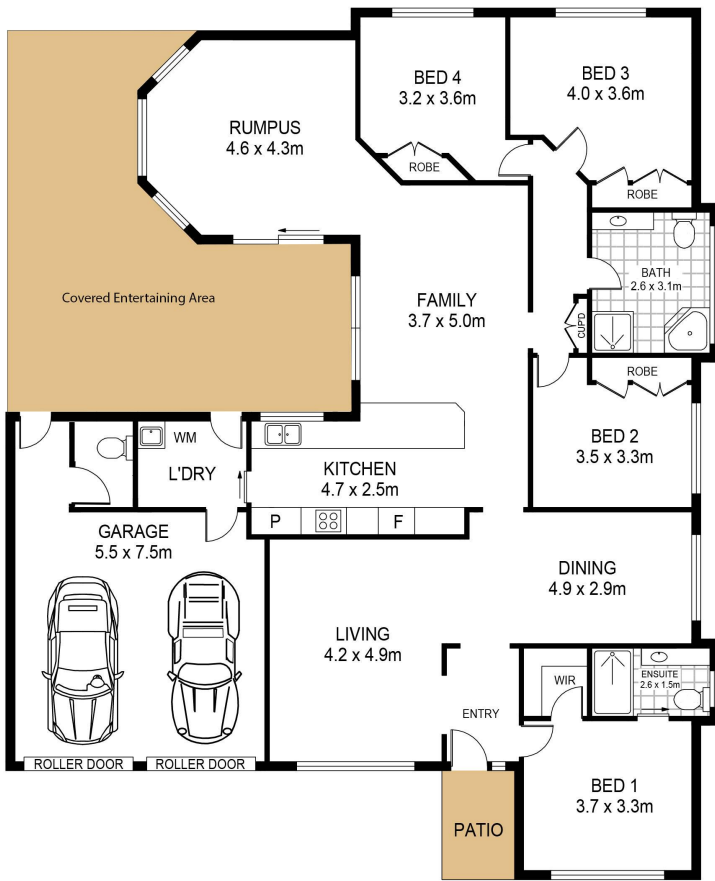
Shop 12, 240-260 Hillsborough Road, WARNERS BAY NSW 2282

lakemacquarie.ljhooker.com.au | warnersbay@ljhooker.com.au



Disclaimer: All information contained therein is gathered from relevant third parties sources. We cannot guarantee or give any warranty about the information provided. Interested parties must rely solely on their own enquiries.

**LJ Hooker Lake Macquarie
(02) 4915 3800**



SITE PLAN 700 sqm

LJ Hooker 9 Nightingale Crescent
Cameron Park

Total Internal Floor Area: 217 sqm

Scale in metres. Indicative only. Dimensions are approximate. All information contained herein is gathered from sources we believe to be reliable. However we cannot guarantee its accuracy and interested persons should rely on their own enquiries