

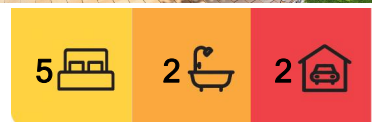
## Cameron Park, 26 Hilldale Drive

INSPECTIONS BY APPOINTMENT ONLY - SPACIOUS SINGLE LEVEL HOME PERFECT FOR THE ENTERTAINER

Welcome to 26 Hilldale Drive, Cameron Park. This immaculately presented single-level residence is the perfect setting for a growing family, offering an abundance of space, comfort, and modern living. With a versatile floor plan, this home boasts five generously sized bedrooms, all equipped with built-in robes, while the master suite is a true retreat with its private ensuite and large built in.

Bathed in natural sunlight, the home features multiple living areas including a formal lounge, an inviting family room and a formal dining room with bar area that seamlessly connects to the outdoor entertaining areas. Step outside to discover beautifully landscaped gardens, a sparkling in-ground pool, and a covered alfresco area ideal for year-round entertaining.

Set on a spacious 707 m<sup>2</sup> level block, this family-friendly haven is not only packed with features but also offers practicality, with ducted air conditioning throughout for year-round



**For Sale**  
\$1,175,000 - \$1,225,000

**View**  
By Appointment

**Contact**  
**Callan O'Reilly**  
0412 168 303  
callan.oreilly@ljhooker.com.au



**LJ Hooker Lake Macquarie**  
**(02) 4915 3800**

**Disclaimer:** All information contained therein is gathered from relevant third parties sources. We cannot guarantee or give any warranty about the information provided. Interested parties must rely solely on their own enquiries.

comfort, as well as a large double garage.

Located just minutes from local amenities, this home is the perfect combination of space, style, and convenience-ideal for families who love to entertain or simply enjoy relaxed living.

Features Include:

- Five bedrooms all with built in robes
- Multiple living areas, including indoor and outdoor
- Gorgeous pool area with adjacent undercover entertaining area
- Recently updated bathrooms and kitchen
- Side access potential into back yard
- Laneway access and 800m approx to Cameron Park Playground and Pasterfield Sports Complex
- 5mins approx to Cameron Park Shopping Village
- 8mins approx to Glendale City Centre
- 8mins approx to M1 Motorway

The information contained herein has been provided by people we believe to be reliable, however all interested parties must rely on their own enquiries.

## More About this Property

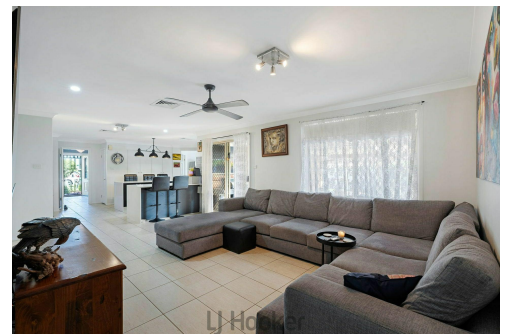
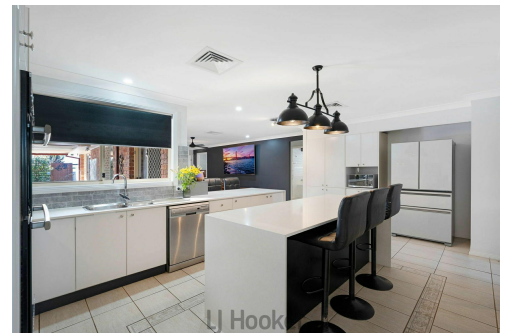
<b>Property ID</b>	Z9QF7Q
<b>Property Type</b>	House
<b>Land Area</b>	707.3 m2
<b>Including</b>	Toilets (3)

**Callan O'Reilly 0412 168 303**

Sales Executive | [callan.oreilly@ljhooker.com.au](mailto:callan.oreilly@ljhooker.com.au)

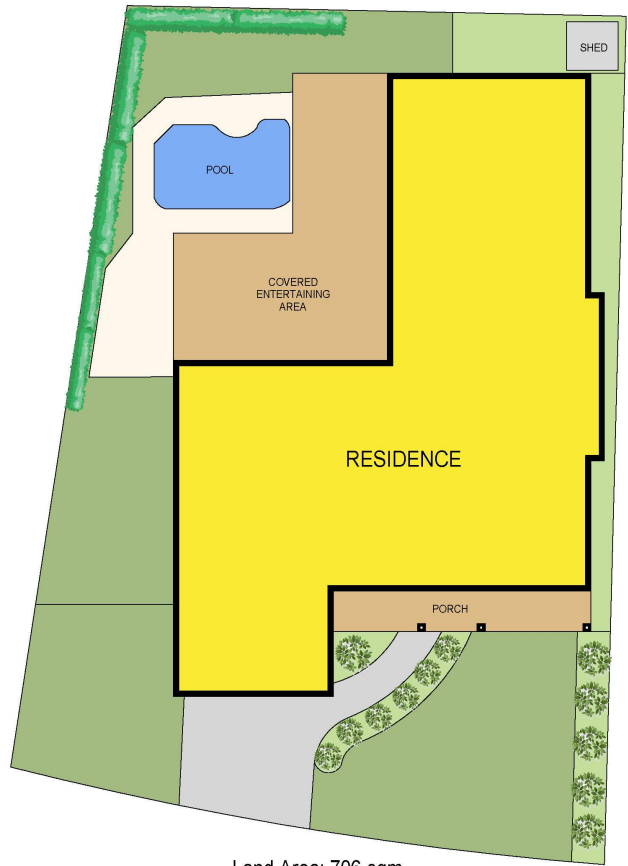
**LJ Hooker Lake Macquarie (02) 4915 3800**

Shop 12, 240-260 Hillsborough Road, WARNERS BAY NSW 2282  
[lakemacquarie.ljhooker.com.au](http://lakemacquarie.ljhooker.com.au) | [warnersbay@ljhooker.com.au](mailto:warnersbay@ljhooker.com.au)



**Disclaimer:** All information contained therein is gathered from relevant third parties sources. We cannot guarantee or give any warranty about the information provided. Interested parties must rely solely on their own enquiries.

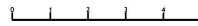
**LJ Hooker Lake Macquarie  
(02) 4915 3800**



Land Area: 706 sqm



26 Hilldale Drive  
Cameron Park



Total Internal Floor Area: 221 sqm (Including Garage)

Scale in metres. Indicative only. Dimensions are approximate. All information contained herein is gathered from sources we believe to be reliable. However we cannot guarantee its accuracy and interested persons should rely on their own enquiries



LJ Hooker Lake Macquarie  
(02) 4915 3800

**Disclaimer:** All information contained therein is gathered from relevant third parties sources. We cannot guarantee or give any warranty about the information provided. Interested parties must rely solely on their own enquiries.