



Cambridge, 16 Lilac Close

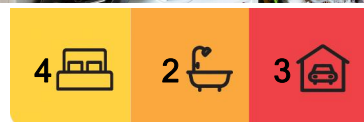
Quick Sale Needed for this Immaculate Family Home

This picture perfect home is nestled in a sought after location. It offers a blend of comfort, space and convenience.

Featuring four spacious double bedrooms, including a master suite with an ensuite and sizeable walk-in wardrobe, this home is designed for relaxed family living. The kitchen is open plan to the dining room and family room and leads to a covered outdoor area, ideal for year round enjoyment.

The fully fenced back yard is perfect for kids and pets. The triple garage plus a large workshop is a dream for car and DIY enthusiasts. With its expansive layout, high quality finishes, superb outdoor space, this home is a must see.

Contact Gerda today to view.



For Sale
By Negotiation

View
By Appointment

Contact
Gerda Venter
027 3113 722
gerda.venter@ljhooker.co.nz



Disclaimer: All information contained therein is gathered from relevant third parties sources. We cannot guarantee or give any warranty about the information provided. Interested parties must rely solely on their own enquiries.

LJ Hooker Cambridge
(07) 827 7188
Tree Town Real Estate Limited

More About this Property

Property ID	V1UGDJ
Property Type	House
House Size	261 m ²
Land Area	738 m ²
Licensed Real Estate Agents (REAA2008)	

Gerda Venter 027 3113 722

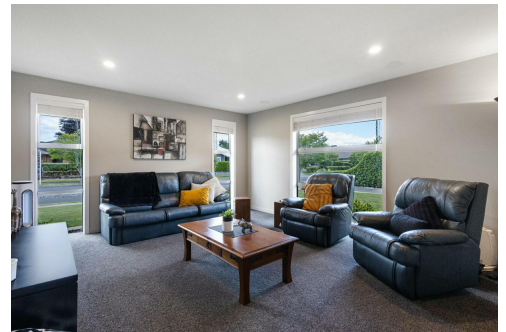
Principal | gerda.venter@ljhooker.co.nz

LJ Hooker Cambridge (07) 827 7188

Tree Town Real Estate Limited

34D Lake Street, CAMBRIDGE 3434

cambridge@ljhooker.co.nz | cambridge@ljhooker.co.nz



Disclaimer: All information contained therein is gathered from relevant third parties sources.

We cannot guarantee or give any warranty about the information provided. Interested parties must rely solely on their own enquiries.

LJ Hooker Cambridge

(07) 827 7188

Tree Town Real Estate Limited