



Cambewarra Village, 15 The Concourse

Breathtaking Views & Family-Friendly Living at Its Finest.

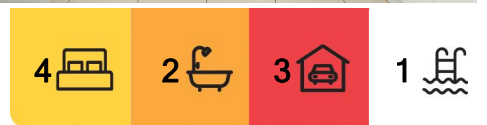
Positioned to capture stunning views of Browns Mountain, this beautifully presented family home offers space, style, and comfort - all move-in ready with nothing to do but enjoy! Featuring four generously sized bedrooms, each with built-in robes, and two well-appointed bathrooms, this home is perfect for families of all sizes.

The master suite enjoys a desirable northerly aspect, complete with a walk-in robe and private ensuite.

You'll love the expansive formal living area, filled with natural light thanks to floor-to-ceiling windows and sliding doors, flowing seamlessly into the formal dining space.

The heart of the home is the spacious kitchen, boasting ample storage, vast bench space, gas cooking, an electric oven, and a dishwasher — ideal for entertaining or accommodating the whole family at once.

The light-filled family room opens onto a deck with breathtaking views, creating a seamless indoor-outdoor lifestyle. Step outside into your own private oasis — a tropical-



For Sale
\$1,050,000 to \$1,100,000

View
By Appointment

Contact
Linda Edwards
0403 437 266
linda.edwards@ljhooker.com.au

inspired plunge pool surrounded by lush landscaping.

Additional features include:

- Northerly aspect with beautiful mountain views
- Tropical-style plunge pool
- 6.6kW solar power system (5kw Inverter)
- Two reverse-cycle air conditioners
- Double garage plus a secure, lockable carport
- Renovated laundry with excellent storage
- Well-fenced backyard with no western neighbour for added privacy and never to be built out views.
- immediate access to the oval, playground and reserve.
- Cambewarra Public School, and general store close by.

Don't miss this opportunity to secure a quality home in a highly sought-after location.

All the hard work has been done

- just move in and enjoy the lifestyle!

For an inspection phone Linda Edwards 0403 437266.

More About this Property

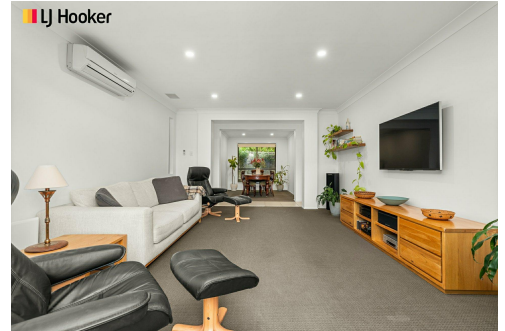
Property ID	67SHSD
Property Type	House
Land Area	592 m2
Including	Ensuite Air Conditioning Toilets (2) Pool Courtyard Deck Dishwasher Outdoor Entertaining Built-in-Robes Fully Fenced Remote Garage Solar Panels

Linda Edwards 0403 437 266

Licensed Real Estate Agent / JP / Member of the LJ Hooker Captains Club |
linda.edwards@ljhooker.com.au

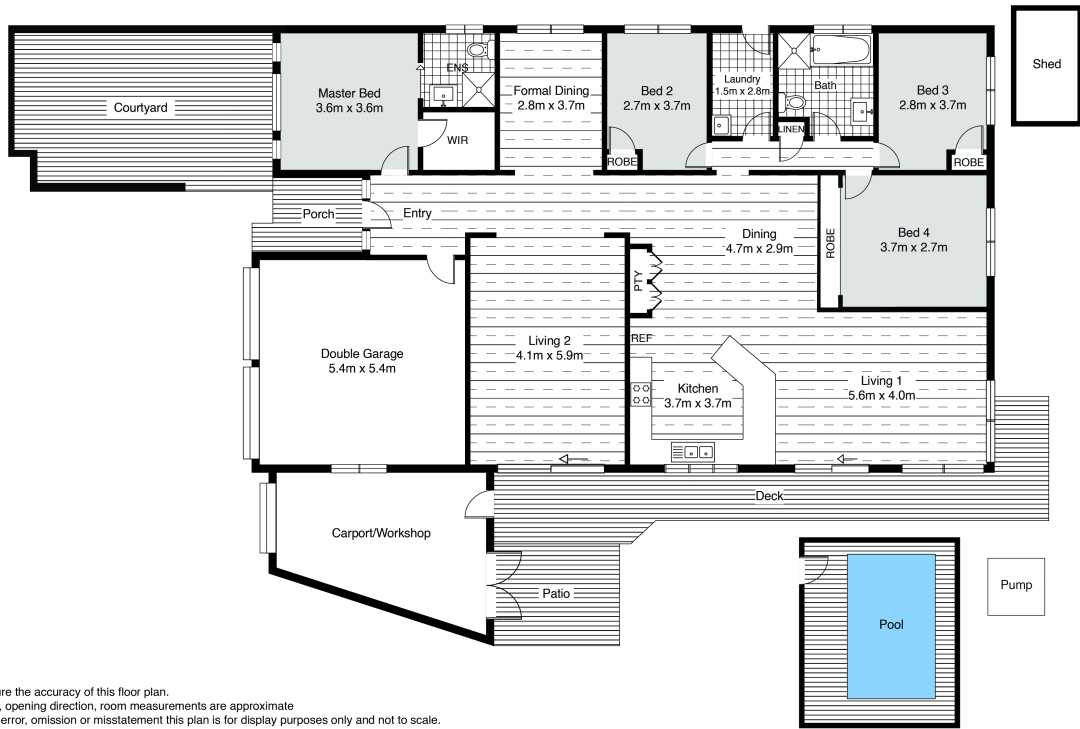
LJ Hooker Nowra (02) 4421 2957

5/38-44 Berry Street, NOWRA NSW 2541
nowra.ljhooker.com.au | nowra@ljhooker.com.au



**LJ Hooker Nowra
(02) 4421 2957**

Disclaimer: All information contained therein is gathered from relevant third parties sources. We cannot guarantee or give any warranty about the information provided. Interested parties must rely solely on their own enquiries.



All attempts have been made to ensure the accuracy of this floor plan.
 All measurements of doors, windows, opening direction, room measurements are approximate
 and no responsibility is taken for any error, omission or misstatement this plan is for display purposes only and not to scale.
 The total floor area is not a guarantee. Should be used as an approximation and not be used on the basis of valuation.



15 The Concourse, Cambewarra Village