

Callington, 11 Montefiore Street

QUAINT COTTAGE LIVING

Quaint cottage located close to South Eastern Freeway entrance in central location of Callington close to Sports Oval, Primary School and Kindergarten.

Travel time to Mt Barker and Hahndorf around 20 minutes and to end of Freeway on City edge around 30 minutes.

This fully renovated Miners Cottage with plenty of character is a pleasure to bring onto the market.

Cottage is the perfect blend of modern convenience and rustic charm.

Consisting of modern kitchen which includes dishwasher, new flooring and furnishings.



Disclaimer: All information contained therein is gathered from relevant third parties sources. We cannot guarantee or give any warranty about the information provided. Interested parties must rely solely on their own enquiries.



For Sale

Please Call

View

ljhooker.com.au/14CKFDQ

Contact

Russell Searby

0413 731 700

rsearby@ljhmtbarker.com.au

Liam Hoare

0468 840 570

lhoare@ljhmtbarker.com.au

LJ Hooker Mount Barker
(08) 8398 6300

Bedroom and lounge have new carpets and the bathroom has been fully upgraded including floor tiling, new shower cubicle to bring it up to modern standards.

The home has been fully painted in all internal areas.

There is also a 9 metre x 6.1 metre shed which can be used as a Teenage Retreat or extra living area, and well established gardens.

Don't delay on viewing this property if you are looking at downsizing or getting into the market.

More About this Property

Property ID	14CKFDQ
Property Type	House
Land Area	330 m²
Including	Air Conditioning Toilets (1)

Russell Searby 0413 731 700

Sales Consultant / Auctioneer | rsearby@ljhmtbarker.com.au

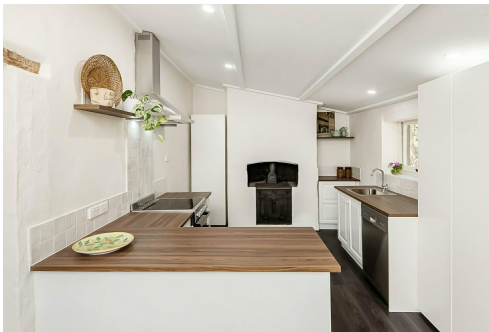
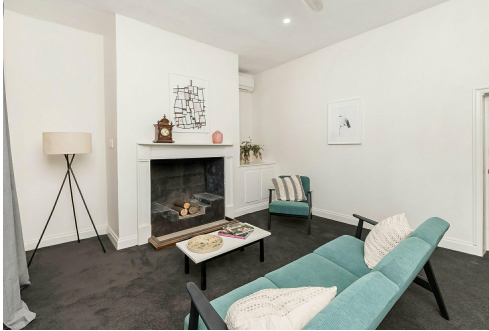
Liam Hoare 0468 840 570

Sales Assistant | lhoare@ljhmtbarker.com.au

LJ Hooker Mount Barker (08) 8398 6300

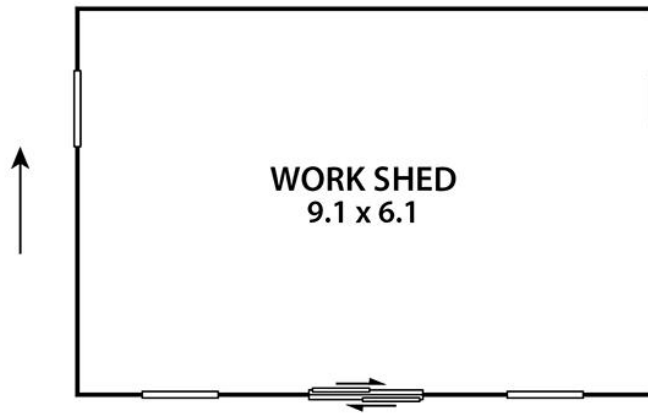
53 Gawler Street, MOUNT BARKER SA 5251

mountbarker.ljhooker.com.au | office@ljhmtbarker.com.au



Disclaimer: All information contained therein is gathered from relevant third parties sources. We cannot guarantee or give any warranty about the information provided. Interested parties must rely solely on their own enquiries.

**LJ Hooker Mount Barker
(08) 8398 6300**



AREA

LIVING:

87.6 m²

VERANDAH:

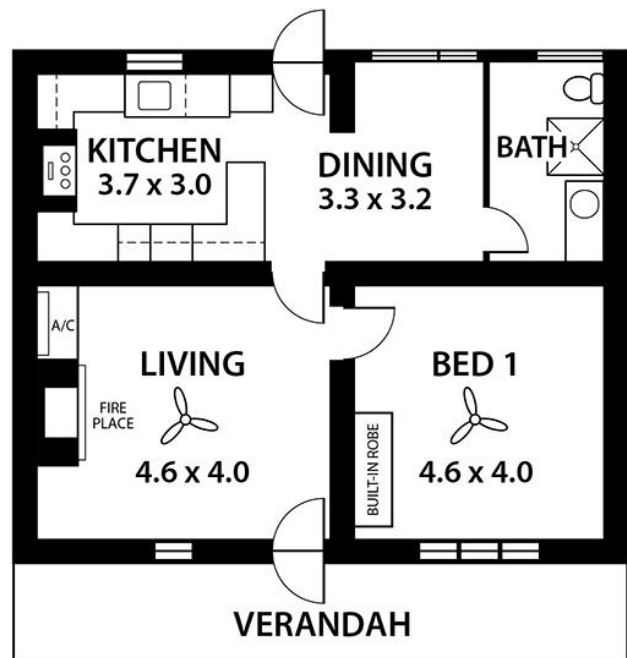
15.4 m²

WORK SHED:

55.8 m²

TOTAL:

158.8 m²



This floorplan is for illustration purposes only and all measurements are approximate. Any information that is intended to be relied upon should be independently verified. Neither the agent or the illustrators take any responsibility for any omission, wrongful inclusion or typographical error which may occur in this drawing as it is intended as an artist's impression only. While every endeavour has been made to verify the correct details in this floor plan, neither the agent, vendor, nor illustrators accept any responsibility for any error or omission.