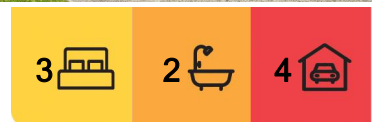


Callala Bay, 8 Woodhill Street

Country Living on the Coast

Looking for Land on the Coast that you can expand on, develop or just enjoy your natural bushland surroundings. This 1,766sqm block is just under 1/2 acre a mostly clear & level block of land with a brick veneer home, side access via the triple carport into the rear yard. Plenty of space on this fabulous block of land to build a 2nd home, pool, large barn shed or just enjoy the space. Discover the perfect blend of tranquility and convenience in this charming property. Nestled amidst picturesque bushland views, this home offers a serene escape just moments away from the stunning coastline. Possible development potential to subdivide, 2nd home or tiny homes STCA.

Lovely established gardens, many storage sheds and a drive-thru triple carport and long concrete driveway leading into the backyard, the perfect storage space for the caravan and the boat. The home is small but simple, new carpet in bedrooms & lounge room. A comfortable home with a living space at the front followed by the main bedroom. Down the hallway bed 2 & 3 and a main bathroom. In the center of the home is the kitchen, dining &



For Sale
\$1,149,000

View
By Appointment

Contact
Vanessa Middleton
0492 945 367
vanessa.middleton@ljhooker.com.au



LJ Hooker Nowra
(02) 4421 2957

Disclaimer: All information contained therein is gathered from relevant third parties sources. We cannot guarantee or give any warranty about the information provided. Interested parties must rely solely on their own enquiries.

living area which opens out onto a large outdoor entertainment area covered by a spanline pitch roof all overlooking established gardens, manicured lawns & spacious backyard. Internal laundry and a 2nd bathroom inside the garage, single garage with a workshop space beside.

Three air conditioners, 2 gas points & gas cooktop and a security system. Multiple garden sheds, large storage shed with power and a greenhouse, 3 large water tanks to water the gardens and lawns, a deep well with storm water storage and submersible pump to fill the tanks. Two self filtering fish ponds surrounded by beautiful gardens to wander and explore.

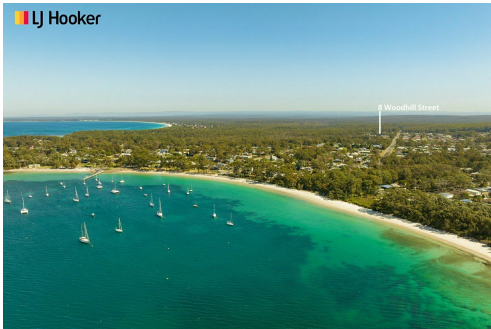
This property is a rare find in a coastal town so close to Jervis Bay located only 1.4km to the water, the bay is the perfect spot for a swim, paddle, stroll along the miles of white sandy beach or kayak with the dolphins. The boat ramp & jetty, park and cycle/walkway is only 1.6km to launch your boat and explore the many beaches and fishing spots in Jervis Bay. Callala Beach & Myola is a short bike ride or car ride, catch the husky ferry to Huskisson for the day. This property is not just a home; it's a lifestyle choice. Experience the joys of country living while being close to the coast. Centrally located to School, shops, doctors, sports field, bus stop, bowling club and golf course Don't miss out on this unique opportunity!

More About this Property

Property ID	61SHSD
Property Type	House
Land Area	1766 m2
Including	Air Conditioning Toilets (2) Outdoor Entertaining Workshop Built-in-Robes Secure Parking Fully Fenced Water Tank

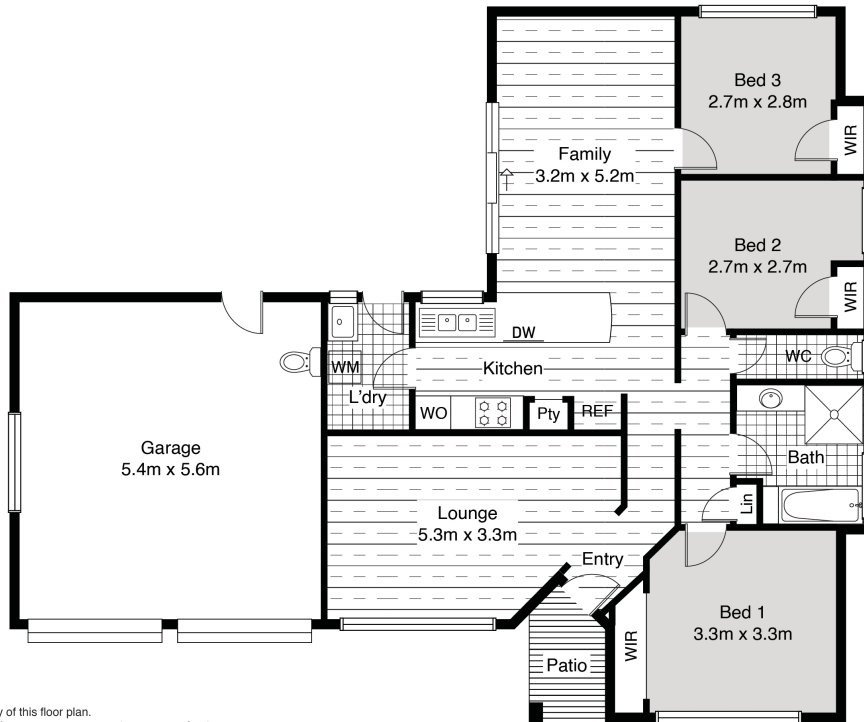
Vanessa Middleton 0492 945 367
Licenced Real Estate Agent | Member of the LJ Hooker Captains Club |
vanessa.middleton@ljhooker.com.au

LJ Hooker Nowra (02) 4421 2957
5/38-44 Berry Street, NOWRA NSW 2541
nowra.ljhooker.com.au | nowra@ljhooker.com.au



Disclaimer: All information contained therein is gathered from relevant third parties sources. We cannot guarantee or give any warranty about the information provided. Interested parties must rely solely on their own enquiries.

LJ Hooker Nowra
(02) 4421 2957



All attempts have been made to ensure the accuracy of this floor plan.
 All measurements of doors, windows, opening direction, room measurements are approximate
 and no responsibility is taken for any error, omission or misstatement this plan is for display purposes only and not to scale.
 The total floor area is not a guarantee. Should be used as an approximation and not be used on the basis of valuation.

8 Woodhill Street, Callala Bay