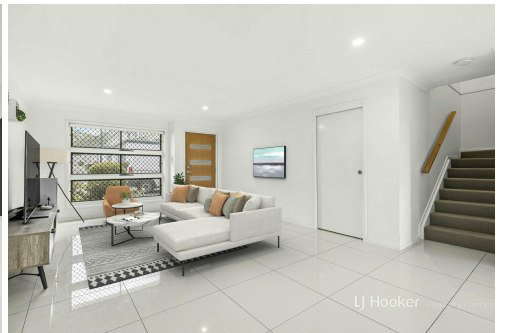
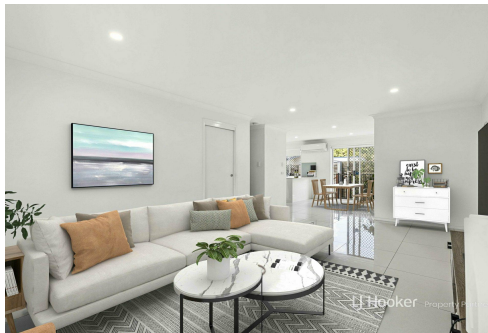
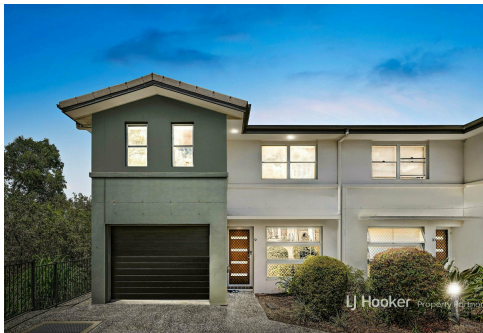




LJ Hooker Property Partners



Calamvale, 9/28 Benhiam Street

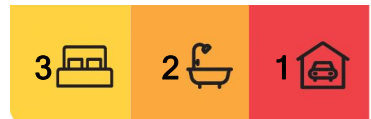
SOLD BY GARY LIU & ASSOCIATES

Modern, low-maintenance, and perfectly positioned - this stylish two-storey townhouse in Benhiam Place offers an ideal lifestyle for first-home buyers, young families, and savvy investors alike. With a spacious open-plan living area, a second lounge upstairs, and a private dual-level courtyard with a timber deck, this home is designed for easy living and effortless entertaining.

Top 5 Features at a Glance:

1. Open-plan lounge, dining, and kitchen area for effortless living.
2. Large dual-level private courtyard with a stylish timber deck.
3. Second living area upstairs, perfect for extra space or a study nook.
4. Master bedroom with ensuite and walk-in robe for a touch of luxury.
5. Prime location near shopping, schools, and public transport.

Step inside to a bright and airy open-plan living space, where natural light flows through



For Sale
Please Call

View
ljhooker.com.au/B2UAF4R

Contact
Gary Liu
0450 996 996
garyliu@ljhpp.com.au

Taylor Ly
0450 898 768
taylorly@ljhpp.com.au

LJ Hooker Property Partners
07 3344 0288

Disclaimer: All information contained therein is gathered from relevant third parties sources. We cannot guarantee or give any warranty about the information provided. Interested parties must rely solely on their own enquiries.

large windows, creating a warm and welcoming atmosphere. The contemporary kitchen is sleek and functional, with plenty of storage and bench space for home cooks. With air conditioning and ceiling fans, year-round comfort is assured.

Upstairs, the second living area offers flexibility - perfect as a media room, kids' play area, or even a home office. The spacious master suite boasts a walk-in robe and ensuite, creating a peaceful retreat, while the additional bedrooms are generously sized with built-in robes.

Outside, the private dual-level courtyard provides a fantastic outdoor space without the upkeep. The timber deck is perfect for relaxing with a coffee, hosting friends, or enjoying Queensland's great weather.

Situated in a convenient pocket of Calamvale, this home is just minutes from shopping centres, renowned schools, and city-direct public transport, making daily life a breeze. Whether you're looking for your first home, a smart investment, or an easy-care downsizer, this townhouse is a fantastic find.

Additional Features:

- Two air conditioners & three ceiling fans
- Security screens on doors & windows
- Built-in robes in all bedrooms
- Secure garage + extra parking space
- Low-maintenance living with modern finishes
- Close to shops, parks, schools & transport
- Walk to Riverina Street Park and Playground

Contact Gary Liu today to arrange an inspection--this one won't last long!

All information contained herein is gathered from sources we consider to be reliable. However, we cannot guarantee or give any warranty about the information provided and interested parties must solely rely on their own enquiries.

More About this Property

Property ID	B2UAF4R
Property Type	Townhouse
Including	Air Conditioning Toilets (3) Courtyard Dishwasher Built-in-Robes Secure Parking Fully Fenced Remote Garage

Gary Liu 0450 996 996

Agent with Zora Liu | garyliu@ljhpp.com.au

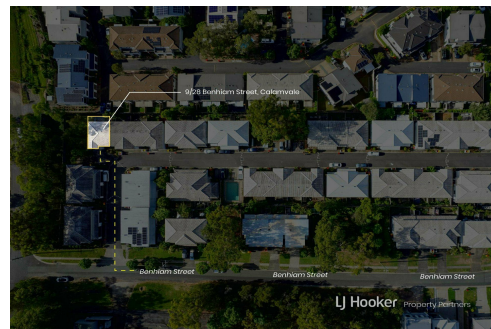
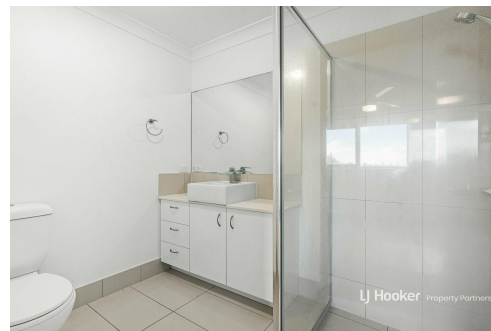
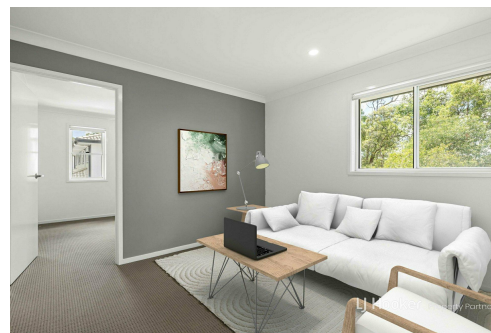
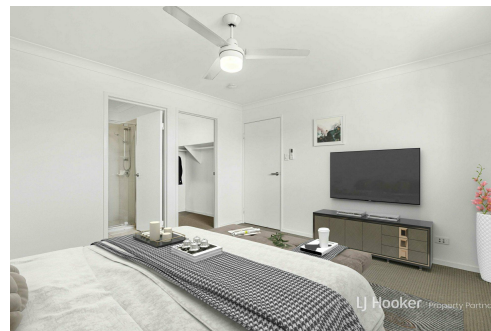
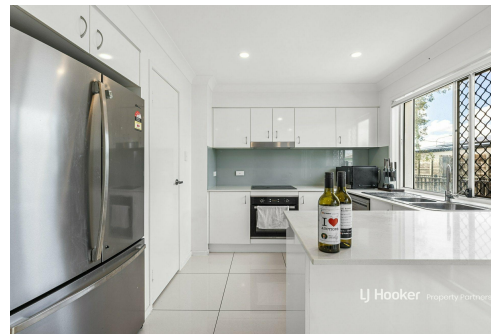
Taylor Ly 0450 898 768

Sales Associate | taylorly@ljhpp.com.au

LJ Hooker Property Partners 07 3344 0288

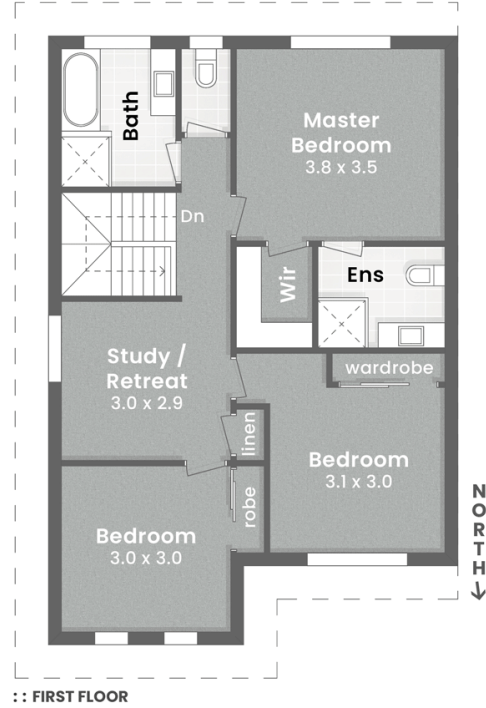
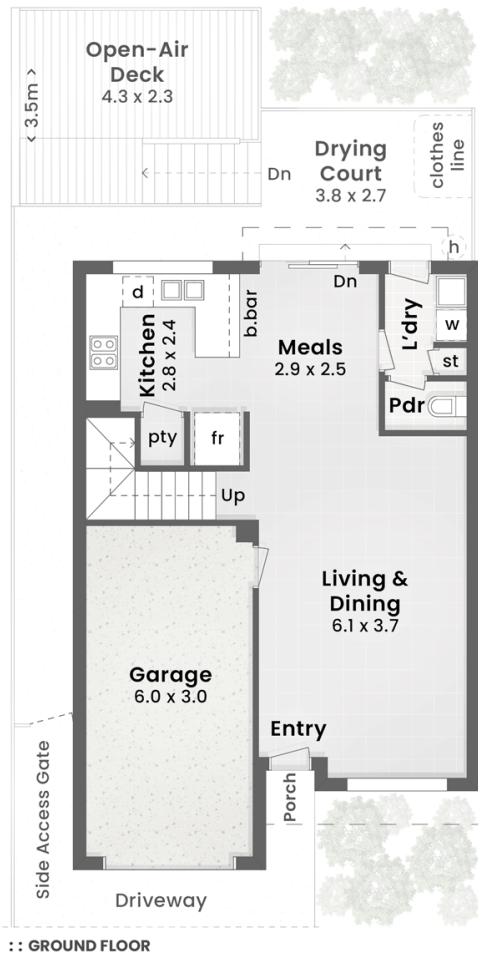
25 Pinelands Road, SUNNYBANK HILLS QLD 4109

propertypartners.ljhooker.com.au | sunnybankhills@ljhpp.com.au

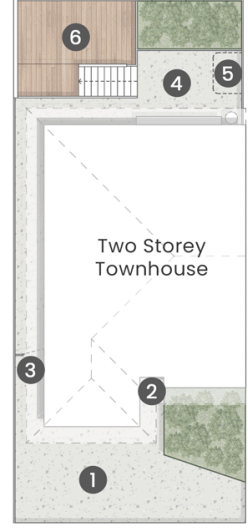


LJ Hooker Property Partners
07 3344 0288

Disclaimer: All information contained therein is gathered from relevant third parties sources. We cannot guarantee or give any warranty about the information provided. Interested parties must rely solely on their own enquiries.



- LEGEND**
1. Driveway
 2. Entry Porch
 3. Side Access Gate
 4. Drying Court
 5. Clothes Line
 6. Open-Air Deck



DRIVEWAY ACCESS TO
BENHIAM STREET

LJ Hooker

Property Partners

BENHIAM PLACE | 9/28 Benhiam Street

CALAMVALE

Internal 145m² | Drying Court, Deck & Porch 32m²

Total 177m²

3 Bed + Study

2 Bath + Powder

1 Car

DISCLAIMER: This is not a legal document therefore all measurements and information provided is subject to survey. No permission is given to use or alter this Floor Plan without the consent of Pure Design Concepts. The overall presentation style, layout, imagery, fonts, background, colours and terminology has been originally created by PDC and is subject to strict copyright. No ownership is taken of building design. Find out more at puredesignconcepts.com.au