

## Calamvale, 79 Grevillea Park Crescent

SOLD BY ALAN GU, ZORA LIU & HAGEN CHAN

Luxury, space, and a prime parkside position - this stunning family home in the prestigious Grevillea Park Estate is a rare find. With an immaculate facade and an interior bathed in natural light, this residence is ready to move in and enjoy.

Offering four generous bedrooms plus a study, three beautifully renovated bathrooms, and an elegant blend of formal and casual living areas, it's designed for families seeking both comfort and class.

Features at a Glance:

1. Prime 802m2 block - Quiet cul-de-sac location neighbouring Corypha Crescent Park.
2. Spacious 4-bedroom + study layout - Ideal for families or multi-generational living.
3. Sunlit open-plan & formal living - Multiple bright living zones with seamless indoor-outdoor flow, air conditioning & new LED lights.
4. Stunning new kitchen & bathrooms - Stylish finishes, breakfast bar, stone benchtops &



**Disclaimer:** All information contained therein is gathered from relevant third parties sources. We cannot guarantee or give any warranty about the information provided. Interested parties must rely solely on their own enquiries.



**For Sale**  
Please Call

**View**  
[ljhooker.com.au/B2VKF4R](http://ljhooker.com.au/B2VKF4R)

**Contact**  
**Alan Gu**  
0430 376 232  
alangu@ljhsbh.com.au  
**Hagen Chan**  
0466 603 703  
hagenchan@ljhpp.com.au

**LJ Hooker Property Partners**  
07 3344 0288

quality appliances.

5. Unbeatable location - Close to top schools, shops, M2 highway access, walk to Gowan Plaza & public transport.

#### Sunlit Spaces & Grand Design

From the moment you arrive, the home's striking street presence and manicured landscaping set the tone for refined family living. Step inside to find soaring ceilings, stunning bay-windowed living areas, and an abundance of natural light that enhances the home's open and airy feel.

A formal lounge and dining area sits in the front of the house, while large tiled living and casual dining spaces surround the sleek new kitchen.

#### A Kitchen Designed to Impress

The heart of the home, the spacious kitchen, is as practical as it is stylish. Featuring modern appliances, glass splashback, ample cabinetry, a huge built-in pantry and a large breakfast bar, it's ideal for everything from quick weekday meals to hosting unforgettable dinner parties.

#### Seamless Indoor-Outdoor Living

Designed for relaxation and entertaining, the home flows effortlessly onto a huge tiled patio, perfect for summer BBQs or unwinding with a glass of wine. The expansive backyard offers lush greenery, complete privacy, and even potential for a pool (STCA), all neighboring the peaceful Corypha Crescent Park.

#### A Tranquil Master Retreat

The lavish master suite is a true sanctuary, featuring a spacious walk-in robe, an elegant ensuite, and stunning bay windows that frame serene parkland views. Upstairs, additional well-sized bedrooms offer built-in storage and plenty of natural light, while the study/retreat creates a perfect space for work or relaxation.

All three bathrooms have been impeccably renovated with sleek modern finishes, including a stylish freestanding bathtub, black tapware, and floor-to-ceiling tiles - ensuring a luxurious, move-in-ready experience.

#### Elite Location & Unmatched Convenience

Tucked away in a quiet cul-de-sac yet just moments from Calamvale Marketplace, Sunnybank Hills Shoppingtown, and top schools like Stretton State College, this location offers the perfect balance of peace and accessibility.

This is more than just a home - it's an opportunity to secure a luxurious lifestyle in a blue-chip location. Don't miss out - contact us today!

All information contained herein is gathered from sources we consider to be reliable. However, we cannot guarantee or give any warranty about the information provided and interested parties must solely rely on their own enquiries.

The Liu Pty Ltd with Sunnybank Districts P/L T/A LJ Hooker Property Partners  
ABN 60 625 175 849 / 21 107 068 020



**LJ Hooker Property Partners**  
**07 3344 0288**

**Disclaimer:** All information contained therein is gathered from relevant third parties sources. We cannot guarantee or give any warranty about the information provided. Interested parties must rely solely on their own enquiries.

## More About this Property

<b>Property ID</b>	B2VKF4R
<b>Property Type</b>	House
<b>Land Area</b>	802 m2
<b>Including</b>	Ensuite Study Air Conditioning Dishwasher Built-in-Robes Secure Parking Fully Fenced Remote Garage

**Alan Gu 0430 376 232**

Agent with Zora Liu | [alangu@ljhsbh.com.au](mailto:alangu@ljhsbh.com.au)

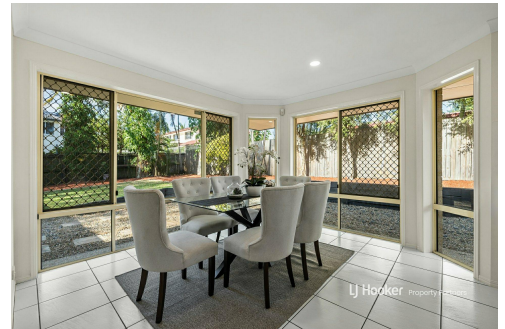
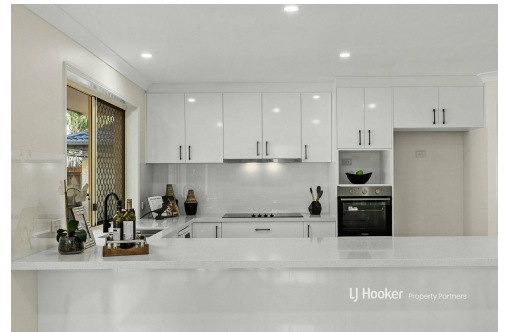
**Hagen Chan 0466 603 703**

Agent with Zora Liu | [hagenchan@ljhpp.com.au](mailto:hagenchan@ljhpp.com.au)

**LJ Hooker Property Partners 07 3344 0288**

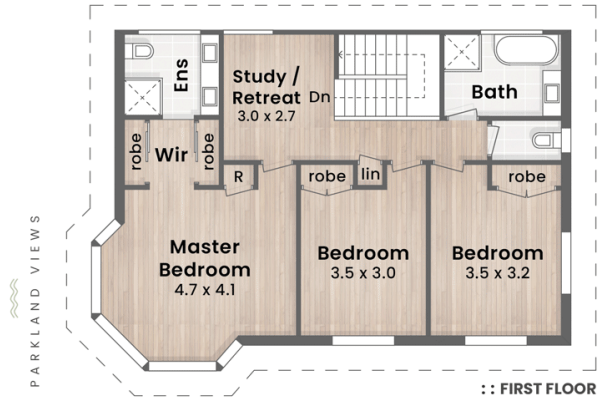
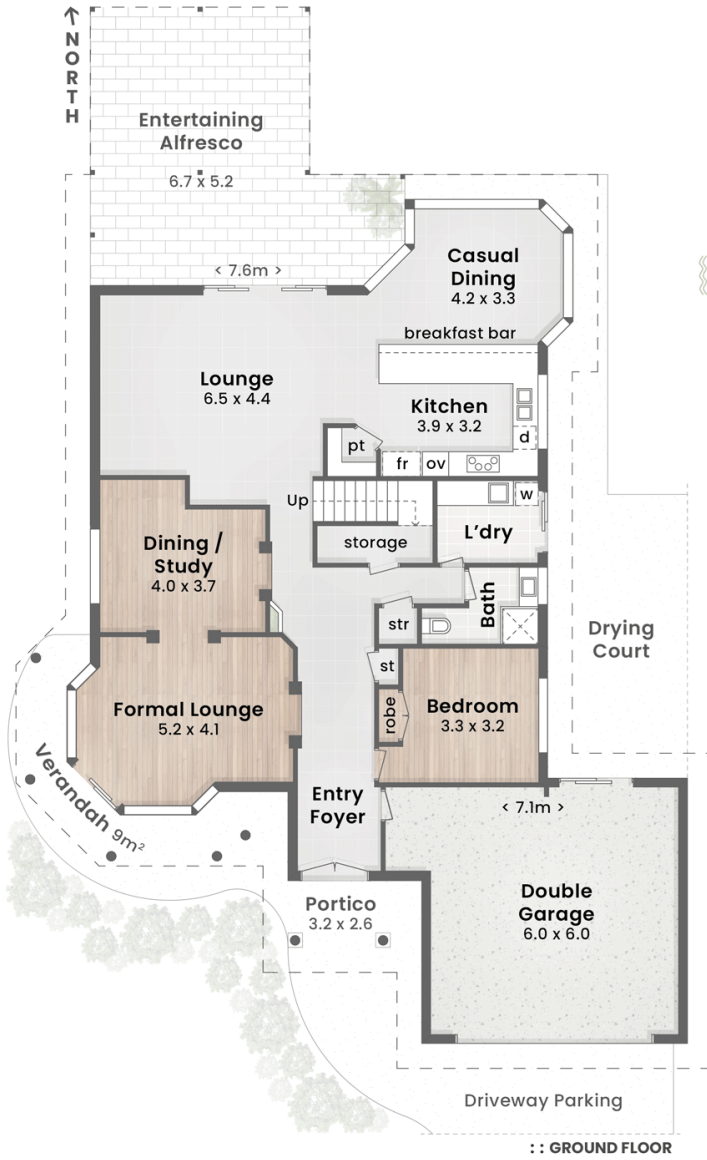
25 Pinelands Road, SUNNYBANK HILLS QLD 4109

[propertypartners.ljhooker.com.au](http://propertypartners.ljhooker.com.au) | [sunnybankhills@ljhpp.com.au](mailto:sunnybankhills@ljhpp.com.au)



**LJ Hooker Property Partners**  
**07 3344 0288**

**Disclaimer:** All information contained therein is gathered from relevant third parties sources. We cannot guarantee or give any warranty about the information provided. Interested parties must rely solely on their own enquiries.



**LEGEND**

- 1. Driveway Parking | 2. Entry Portico | 3. Verandah
- 4. Garden Shed | 5. Entertaining Alfresco | 6. Fenced Grass Yard



**LJ Hooker**  
Property Partners

79 Grevillea Park Crescent  
**CALAMVALE**

Internal 275m<sup>2</sup> | Alfresco, Verandah & Portico 55m<sup>2</sup>  
**Total 330m<sup>2</sup>**

802m<sup>2</sup>

4 Bed + Study

3 Bath

2 Car + Off-Street

**DISCLAIMER:** This is not a legal document therefore all measurements and information provided is subject to survey. No permission is given to use or alter this Floor Plan without the consent of Pure Design Concepts. The overall presentation style, layout, imagery, fonts, background, colours and terminology has been originally created by PDC and is subject to strict copyright. No ownership is taken of building design. Find out more at [puredesignconcepts.com.au](http://puredesignconcepts.com.au)