



6 Bottletree Place, Calamvale

SOLD BY FARAZ PEYMAN

A truly stunning home in one of Calamvale's most exclusive pockets, this grand double-storey residence delivers space, grace and a privileged position. With Gowan Road Park just beyond the back fence and elite schools only minutes away, it's a refined family haven where style meets convenience.

Top 5 Features at a Glance:

1. Grand family design - With multiple formal and casual living zones.
2. Chef's kitchen - Stunning Neff appliances, stone benches, storage & butler's pantry.
3. Luxurious accommodation - Five bedrooms & a private master dressing room & ensuite.
4. Outdoor lifestyle - Huge terrace overlooking an in-ground pool and parkland backdrop.
5. Elite location - Backing Gowan Road Park, in the Stretton State College catchment.

Behind the stately and secure facade featuring automatic gates, framed by twin columns and manicured hedges, the home opens to a light-filled foyer where natural light cascades through double-height windows. Every surface speaks of quality and care - immaculate paintwork, crisp cabinetry, gleaming tiled floors and beautifully finished bathrooms - creating an immediate sense of calm luxury. The

5 🏠 3 🚗 2 🚘

FOR SALE

Please Call

AGENTS

Faraz Peyman
0424771557
farazpeyman@ljhpp.com.au

AGENCY

LJ Hooker Property Partners
07 3344 0288

All information contained therein is gathered from relevant third parties sources.
We cannot guarantee or give any warranty about the information provided.
Interested parties must rely solely on their own enquiries.

 **LJ Hooker**

generous double garage offers both an internal entryway and external walkthrough access to the backyard.

Graceful archways lead through a sequence of formal and casual living zones - each distinct yet seamlessly connected. The front lounge invites quiet conversation; the family living and dining areas form part of the relaxed everyday hub, flowing effortlessly to the outdoors.

The kitchen takes pride of place, defined by gorgeous white cabinetry, marble-style stone benchtops and pendant-lit island seating. Neff appliances add precision and prestige, while a large butler's-style pantry with full cabinetry extends both storage and functionality. Every surface speaks of quality and consideration - built for the astute modern family.

Glass doors lead you out to the alfresco terrace - an expansive, covered space paved in slate-textured concrete and edged by neat garden beds with plenty of space for growing flowers and vegetables. From here, the outlook opens wide to the pool and lawn, all backdropped by the greenery of Gowan Road Park. There's a rare sense of privacy and calm, with room for celebrations, play and relaxed weekend living.

Accommodation is equally impressive. Upstairs, four bedrooms sit off a bright landing, each with built-in storage and ceiling fans. Cosy bay window seating provides a peaceful backdrop for reading. The master suite is a genuine retreat: spacious, airy and framed by treetop views. A custom walk-in dressing room offers beautifully fitted cabinetry, while the ensuite adds twin vanities, a frameless shower, spa bath with jets, and full-height tiles in soft stone tones. The family bathroom features the same fine finishes, complete with a deep bath and seamless shower.

A fifth bedroom and third bathroom on the lower level create flexibility for guests, older family or extended stays.

Practical features include ducted and split-system air conditioning, solar power, a water tank, plantation shutters, ceiling fans and a remote double garage with internal access. Every element contributes to comfort, efficiency and ease.

The location completes the picture:

- 4 minutes to Calamvale Marketplace for dining and daily essentials
- 6 minutes to Calamvale Community College
- Moments to Stretton State College and nearby kindergartens
- Close to city-bound bus links, Calamvale Central & Sunnybank Hills Shoppingtown

In a street of high-calibre homes, 6 Bottletree Place stands out for both setting and design - a home that balances grandeur with liveability, and privacy with proximity. Families seeking presence, practicality and a prestigious address will find their next chapter waiting here.

Inspect now and experience park-edge living at its finest. Contact Faraz Peyman today.

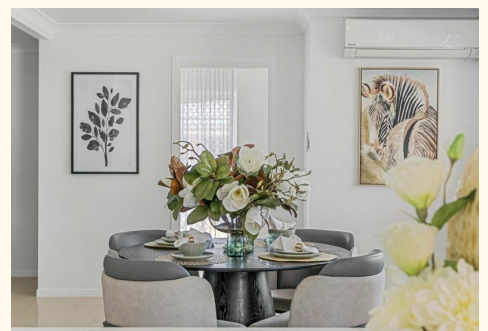
All information contained herein is gathered from sources we consider to be reliable. However, we cannot guarantee or give any warranty about the information provided and interested parties must solely rely on their own enquiries.

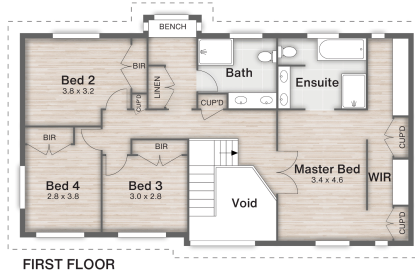
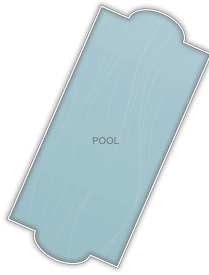
MORE DETAILS

Property ID B3KUF4R
Property Type House
Land Area 860 m2
Including Ensuite
Air Conditioning
Ducted Cooling
Pool
Dishwasher
Outdoor Entertaining
Built-in-Robes
Fully Fenced
Remote Garage
Solar Panels
Water Tank

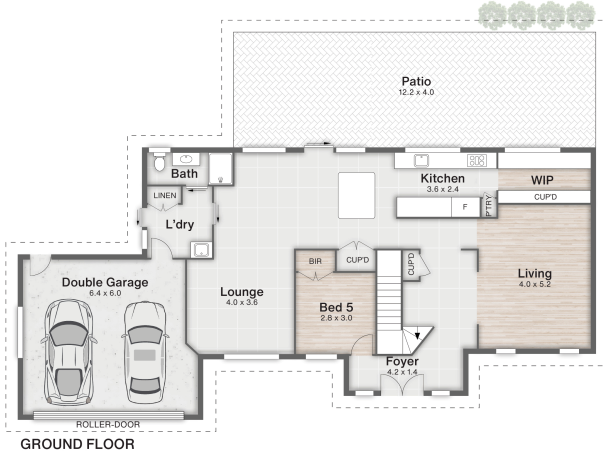
Faraz Peyman 0424771557
Agent | farazpeyman@ljhpp.com.au

LJ Hooker Property Partners 07 3344 0288
25 Pinelands Road, SUNNYBANK HILLS QLD 4109
propertypartners.ljhooker.com.au | sunnybankhills@ljhpp.com.au





FIRST FLOOR



GROUND FLOOR



- 1 Garage
- 2 Patio
- 3 Pool

Bottletree Place

6 Bottletree Place CALAMVALE

5 | 3 | 2 | 320m² | 860m²



DISCLAIMER
This is not a legal document; all measurements and dimensions are approximate and are subject to errors, omission or misstatement. No liability will be accepted. Plans are shown for marketing purposes only.