



## Caboolture South, 9 Fowler Drive

### Charming Brick Beauty

Welcome to 9 Fowler Drive, Caboolture South &mdash; a charming brick beauty nestled on a generous 609m<sup>2</sup> block. This well-maintained home offers the perfect blend of comfort and practicality, featuring three bedrooms, one bathroom, and a single lockup garage. Ideal for first-home buyers, downsizers, or savvy investors, this solid residence boasts a stunning backyard with plenty of room for kids, pets, or future landscaping dreams. Conveniently located close to local schools, shops, and transport, this home is ready to welcome its next chapter. Don't miss the opportunity to make it yours!

3 

1 

1 

**For Sale**  
Please Call

**View**  
[ljhooker.com.au/68J0X](https://ljhooker.com.au/68J0X)

**Contact**  
**Craig Gillard**  
0410 553 557  
[craig.gillard@ljhooker.com.au](mailto:craig.gillard@ljhooker.com.au)



**Disclaimer:** All information contained therein is gathered from relevant third parties sources. We cannot guarantee or give any warranty about the information provided. Interested parties must rely solely on their own enquiries.

**LJ Hooker Caboolture | Morayfield**  
**07 3120 0858**



# More About this Property

Property ID	68J0X
Property Type	House
Land Area	609 m2

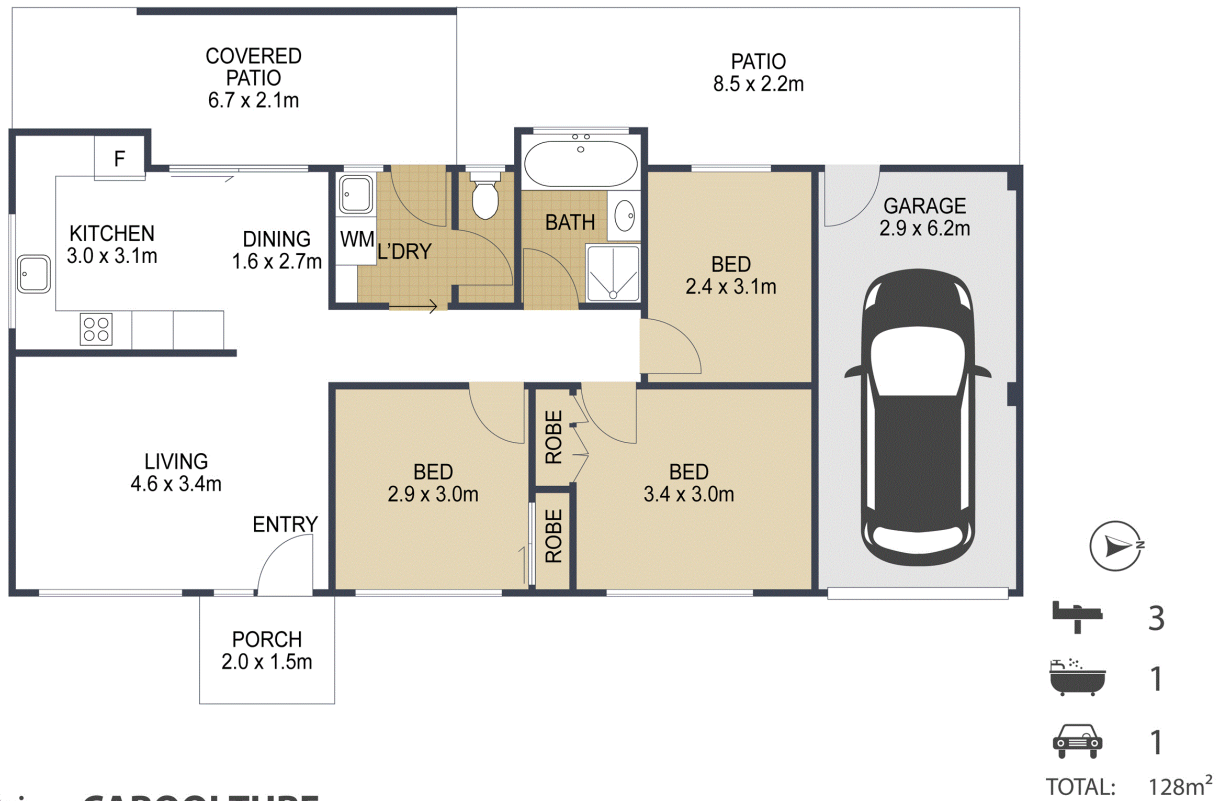
Craig Gillard 0410 553 557  
Principal / Licensee | craig.gillard@ljhooker.com.au

LJ Hooker Caboolture | Morayfield 07 3120 0858  
1/207 Morayfield Road, MORAYFIELD QLD 4506  
caboolture.ljhooker.com.au | sales.caboolture@ljhooker.com.au



**Disclaimer:** All information contained therein is gathered from relevant third parties sources.  
We cannot guarantee or give any warranty about the information provided. Interested parties must rely solely on their own enquiries.

LJ Hooker Caboolture | Morayfield  
07 3120 0858



## 9 Fowler Drive, CABOOLTURE

ARTIST'S IMPRESSION ONLY: While every attempt has been made to ensure the accuracy of this floor plan's areas and measurements of doors, windows, rooms and all other items are approximate and no responsibility is taken for any error, omission, or mis-statement. This plan is for illustrative purposes only and should only be used as such by any prospective purchaser.  
Floor plan by: [www.open2view.com.au](http://www.open2view.com.au)

