



## Caboolture, 15/78 Lower King Street

### CONTRACT CRASHED - QUICK SALE REQUIRED

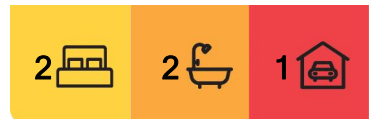
INVESTORS —MODERN UNIT —PRIME LOCATION

Tenant in place until 06 February 2025 - \$380:00 per week.

This Modern Set of Units are located in close proximity to Caboolture Hospital, Caboolture State High School, Caboolture State School, Caboolture Square Shopping Centre, Train Station and Centenary Lakes Park

The Unit offers Open Plan Living / Dining, Modern Kitchen, Two Double Size Bedrooms, Two Modern Bathrooms, Covered Tiled Balcony, Single Car Space.

Body Corp per annum- Admin \$2666.67 Sinking \$1,970.00 Insurance \$574.00  
Rates approx. \$425:00 per qtr.



**For Sale**  
\$347,000

**View**  
[ljhooker.com.au/38B8F1R](http://ljhooker.com.au/38B8F1R)

**Contact**  
**David Winters**  
0418 731 099  
[d winters@ljhooker.com.au](mailto:d winters@ljhooker.com.au)



**Disclaimer:** All information contained therein is gathered from relevant third parties sources. We cannot guarantee or give any warranty about the information provided. Interested parties must rely solely on their own enquiries.

**LJ Hooker Aspley | Chermside**  
**(07) 3263 6022**

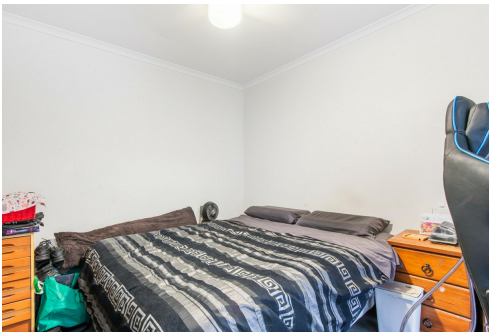
For more Information on this property please contact David Winters.

## More About this Property

|               |         |
|---------------|---------|
| Property ID   | 38B8F1R |
| Property Type | Unit    |

David Winters 0418 731 099  
Sales Consultant | dwinters@ljhooker.com.au

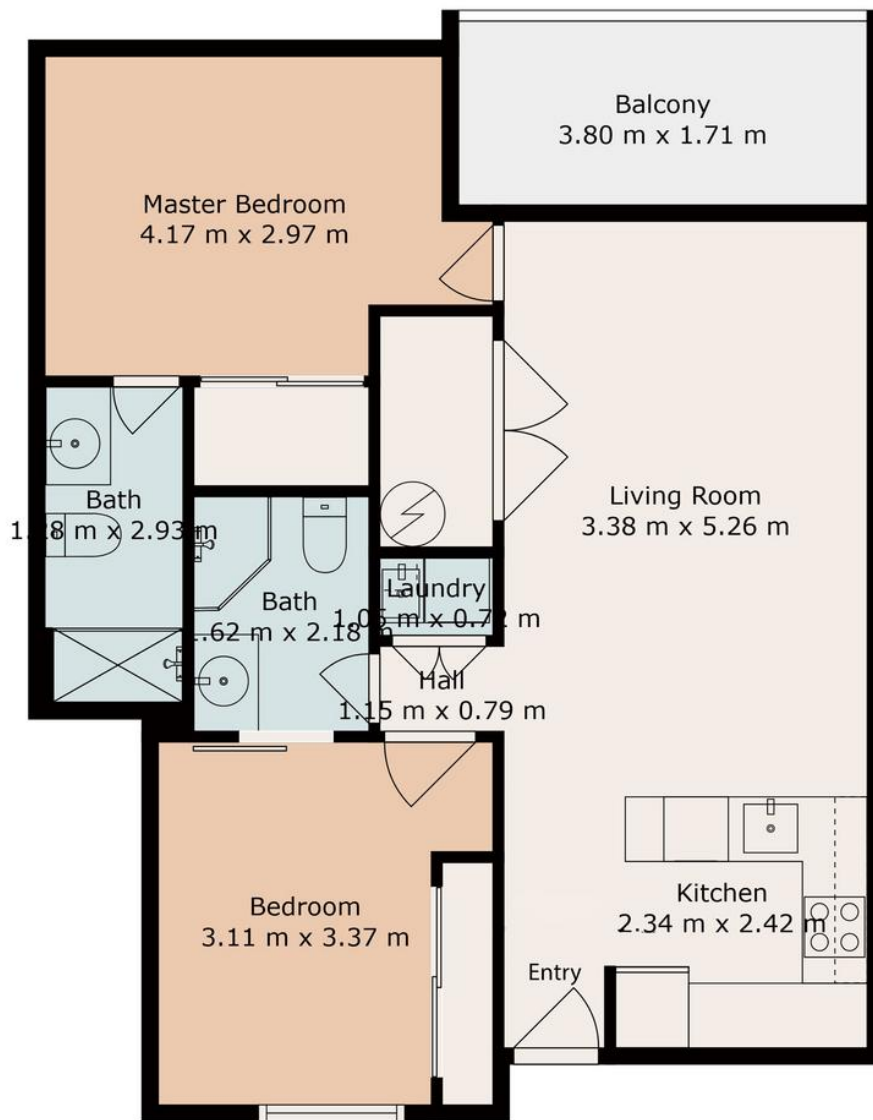
LJ Hooker Aspley | Chermside (07) 3263 6022  
1359 Gympie Road, ASPLEY QLD 4034  
aspley.ljhooker.com.au | aspley@ljhooker.com.au



**Disclaimer:** All information contained therein is gathered from relevant third parties sources.  
We cannot guarantee or give any warranty about the information provided. Interested parties must rely solely on their own enquiries.

LJ Hooker Aspley | Chermside  
(07) 3263 6022





Whilst every attempt has been made to ensure accuracy,  
Floor Plans are representative and should be used as a guide only

**LJ Hooker**