



Buttaba, 9 Earswick Crescent

PEACEFUL AND PRIVATE

Perfectly positioned with reserve at the front and the rear of the property, you will enjoy this quiet and private location as you settle into your dream home. Stroll down the reserve to the waters edge where you'll find out what living in Lake Macquarie is all about.

The home offers a highly functional modern floorplan with a flowing open design, multiple living areas, large covered alfresco and fantastic pool area with the added bonus of drive through access to shed at the rear. Four bedrooms of accommodation all with wardrobing, including the primary bedroom with walk in robe and ensuite.

Perfect packages like this wont last long, be quick to secure your dream home.

PROPERTY HIGHLIGHTS

-Lake reserve across the road



Disclaimer: All information contained therein is gathered from relevant third parties sources. We cannot guarantee or give any warranty about the information provided. Interested parties must rely solely on their own enquiries.



For Sale
\$870,000

View
ljhooker.com.au/Z86F7Q

Contact
Lachlan Porter
0435 737 131
lachlan.porter@ljhooker.com.au
Telisha Moffat
0481 157 243
telisha.moffat@ljhooker.com.au

LJ Hooker Lake Macquarie
(02) 4915 3800

- Grass reserve at the rear
 - Flowing single level floorplan
 - Multiple living areas
 - Great pool area
 - Large covered alfresco
 - Drive through double garage to large shed
 - Ducted air conditioning
 - Functional three-way bathroom
 - Primary bedroom with walk in and ensuite
 - All bedrooms with wardrobes
 - Ducted air-conditioning
 - Close proximity to local schools, shops, parks and the lake
- The information contained herein has been provided by people we believe to be reliable, however all interested parties must rely on their own enquiries.

More About this Property

| | |
|----------------------|--|
| Property ID | Z86F7Q |
| Property Type | House |
| Land Area | 638.6 m2 |
| Including | <ul style="list-style-type: none"> Study Air Conditioning Toilets (2) Dishwasher Built-in-Robes Close to Schools Close to Shops Close to Transport Dining room Fenced Backyard |

Lachlan Porter 0435 737 131

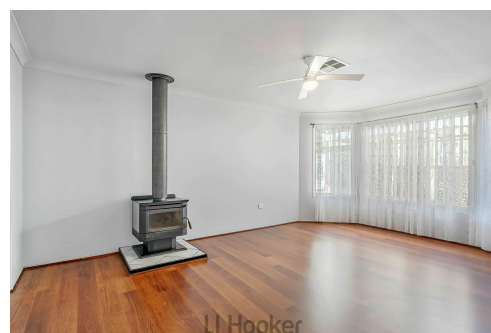
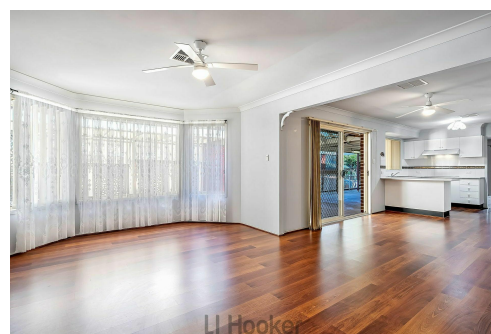
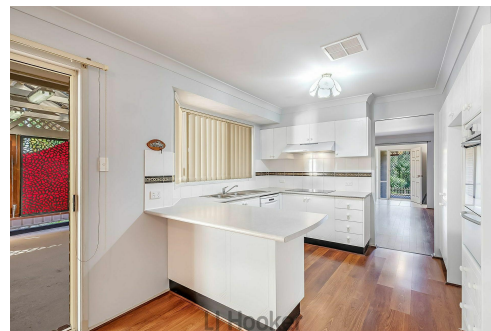
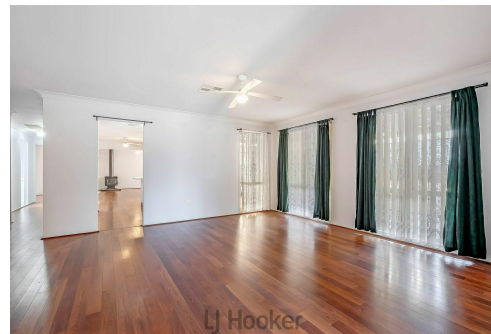
Sales Executive | Independent Contractor | lachlan.porter@ljhooker.com.au

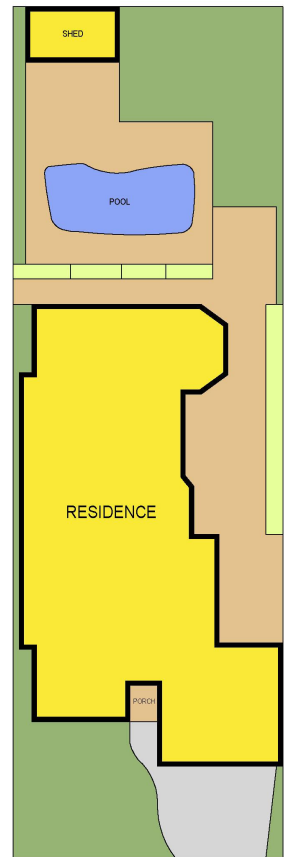
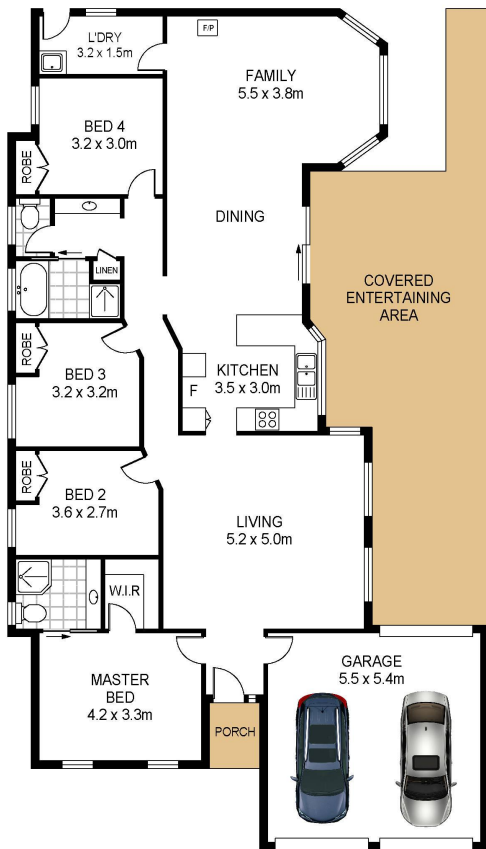
Telisha Moffat 0481 157 243

Sales Associate to Lachlan Porter | telisha.moffat@ljhooker.com.au

LJ Hooker Lake Macquarie (02) 4915 3800

Shop 12, 240-260 Hillsborough Road, WARNERS BAY NSW 2282
lakemacquarie.ljhooker.com.au | warnersbay@ljhooker.com.au

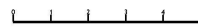




Land Area: 643 sqm



LJ Hooker 9 Earswick Crescent
Buttaba



Total Internal Floor Area: 148 sqm

Scale in metres. Indicative only. Dimensions are approximate. All information contained herein is gathered from sources we believe to be reliable. However we cannot guarantee its accuracy and interested persons should rely on their own enquiries.