

25 Earswick Crescent, Buttaba

HAMPTONS CHARM MEETS MODERN FAMILY LIVING

Beautifully presented and filled with natural light, this stunning Hamptons-inspired home delivers the perfect blend of character, comfort and functionality in a sought-after Buttaba setting.

Thoughtfully designed across two levels, the home offers a versatile floorplan ideal for growing families, with multiple living zones and a seamless connection between indoor and outdoor entertaining. The heart of the home is the stylish open plan kitchen, dining and living area, flowing effortlessly out to a sun-drenched deck overlooking the private backyard.

Upstairs, the oversized master retreat provides a peaceful escape complete with walk-in robe and ensuite, while additional bedrooms are generously sized and serviced by a well-appointed main bathroom.

Positioned on a low-maintenance block with side access to a carport and additional shedding, this is a home that caters to both lifestyle and practicality - all just moments from the lake, local shops and schools.

Property Features

All information contained therein is gathered from relevant third parties sources. We cannot guarantee or give any warranty about the information provided. Interested parties must rely solely on their own enquiries.

4 2 2

FOR SALE

Buyers Guide \$1,090,000

VIEW

Sun 26th Apr @ 2:00PM - 2:30PM

AGENTS

Lachlan Porter
0435 737 131
lachlan.porter@ljhooker.com.au

Telisha Moffat
0481 157 243
telisha.moffat@ljhooker.com.au

AGENCY

LJ Hooker Lake Macquarie
(02) 4915 3800



- Four generous bedrooms, including oversized upstairs master retreat with ensuite & walk-in robe
- Multiple living zones including open plan living plus separate family room
- Stylish kitchen with island bench, ample storage & quality appliances
- Seamless flow to covered outdoor deck, ideal for entertaining
- Well-appointed main bathroom plus internal laundry
- Light-filled interiors with neutral tones throughout
- Carport with side access plus additional shed/storage
- Private study area
- Mature macadamia nut producing tree
- maintenance yard with private, family-friendly setting
- Convenient location close to Lake Macquarie, schools, shops & amenities

The information contained herein has been provided by people we believe to be reliable, however all interested parties must rely on their own enquiries.

MORE DETAILS

Property ID	ZHHF7Q
Property Type	House
Land Area	522 m2
Including	Ensuite
	Air Conditioning
	Toilets (2)
	Dishwasher
	Built-in-Robes
	Close to Schools
	Close to Shops
	Close to Transport
	Outdoor living
	Walk-in robe

Lachlan Porter 0435 737 131

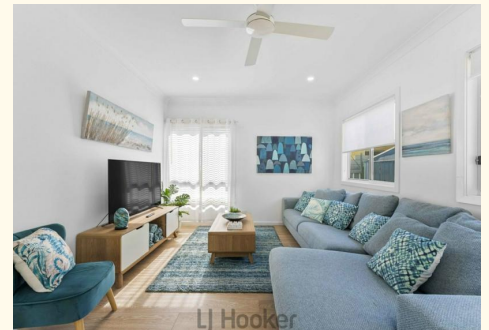
Sales Executive | Independent Contractor |
lachlan.porter@ljhooker.com.au

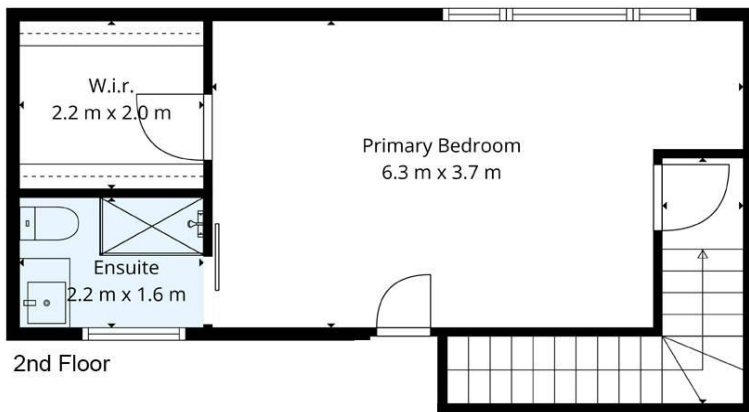
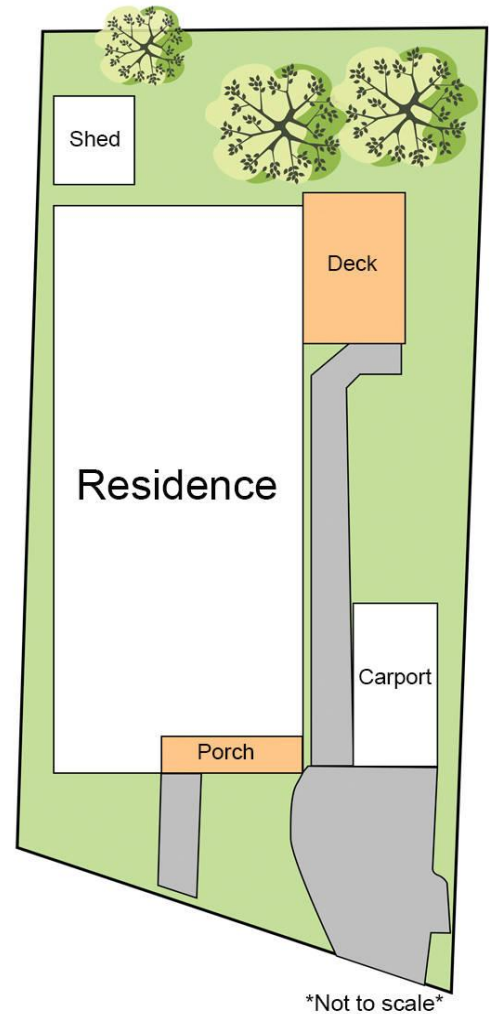
Telisha Moffat 0481 157 243

Sales Associate to Lachlan Porter | telisha.moffat@ljhooker.com.au

LJ Hooker Lake Macquarie (02) 4915 3800

Shop 12, 240-260 Hillsborough Road, WARNERS BAY NSW 2282
lakemacquarie.ljhooker.com.au | warnersbay@ljhooker.com.au





LJ Hooker 25 Earswick Cres,
Buttaba

Total Internal Floor Area: 192m²

Scale in metres. Indicative only. Dimensions are approximate. All information contained herein is gathered from sources we believe to be reliable. However we cannot guarantee its accuracy and interested persons should rely on their own enquiries.



All information contained therein is gathered from relevant third parties sources. We cannot guarantee or give any warranty about the information provided. Interested parties must rely solely on their own enquiries.

LJ Hooker