



Buttaba, 14 Earswick Crescent

HUGE LEVEL BLOCK —NEAT AS A PIN!

What an opportunity here at 14 Earswick Cres; Boasting a level 897sqm block, over 21m of frontage and all wrapped up neatly with a perfectly presented brick home, rarely do we find such a functional package at an affordable price point. You may need to jump on this one quickly!

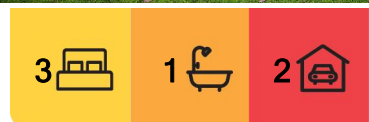
The home offers an oversized attached garage, Ultra modern bathroom plus tidy and functional living, dining and kitchen area. Move straight in and enjoy this lovely updated home full of potential.

PROPERTY HIGHLIGHTS

- Level 897sqm block
- 21m frontage
- Tidy brick home



Disclaimer: All information contained therein is gathered from relevant third parties sources. We cannot guarantee or give any warranty about the information provided. Interested parties must rely solely on their own enquiries.



For Sale
\$725,000

View
ljhooker.com.au/Z6MF7Q

Contact
Lachlan Porter
0435 737 131
lachlan.porter@ljhooker.com.au
Telisha Moffat
0481 157 243
telisha.moffat@ljhooker.com.au

LJ Hooker Lake Macquarie
(02) 4915 3800

- Oversized double garage
- Ultra modern bathroom
- Tidy kitchen overlooking the yard
- Spacious bedrooms, two with wardrobes
- Air conditioned
- Ceiling fans
- Close proximity to local school, shops and boat ramps

The information contained herein has been provided by people we believe to be reliable, however all interested parties must rely on their own enquiries.

More About this Property

Property ID	Z6MF7Q
Property Type	House
Land Area	897.9 m2
Including	Air Conditioning Toilets (1) Built-in-Robes Carpeted Close to Schools Close to Shops Close to Transport Dining room Fenced Backyard

Lachlan Porter 0435 737 131

Sales Executive | Independent Contractor | lachlan.porter@ljhooker.com.au

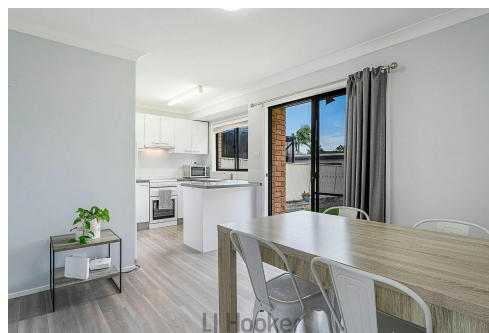
Telisha Moffat 0481 157 243

Sales Associate to Lachlan Porter | telisha.moffat@ljhooker.com.au

LJ Hooker Lake Macquarie (02) 4915 3800

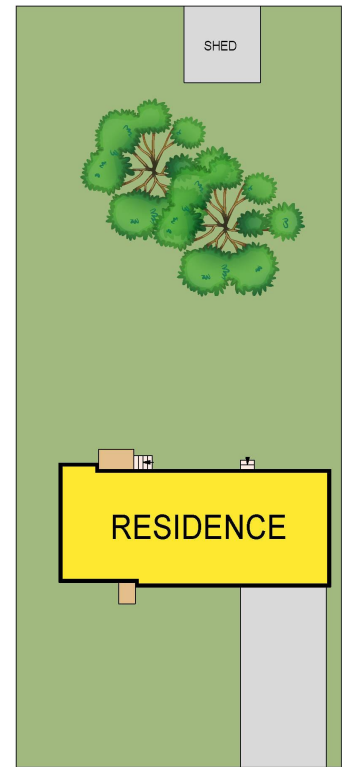
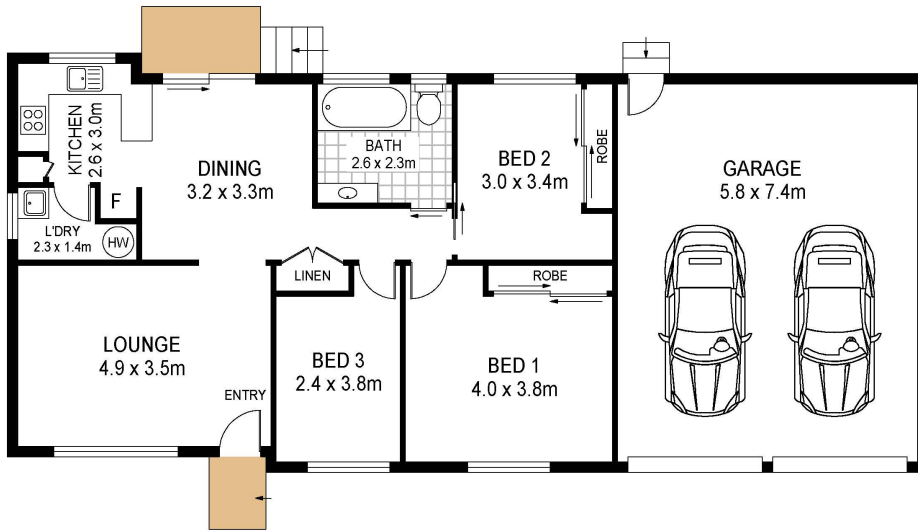
Shop 12, 240-260 Hillsborough Road, WARNERS BAY NSW 2282

lakemacquarie.ljhooker.com.au | warnersbay@ljhooker.com.au



LJ Hooker Lake Macquarie
(02) 4915 3800

Disclaimer: All information contained therein is gathered from relevant third parties sources. We cannot guarantee or give any warranty about the information provided. Interested parties must rely solely on their own enquiries.



14 Earswick Crescent
Buttaba



Total Internal Floor Area: 132 sqm

Scale in metres. Indicative only. Dimensions are approximate. All information contained herein is gathered from sources we believe to be reliable. However we cannot guarantee its accuracy and interested persons should rely on their own enquiries



LJ Hooker Lake Macquarie
(02) 4915 3800

Disclaimer: All information contained therein is gathered from relevant third parties sources. We cannot guarantee or give any warranty about the information provided. Interested parties must rely solely on their own enquiries.