

Butler, 89 Shepperton Drive

PRIVATE VIEWINGS WELCOMED

Absolute ZERO Maintenance Living.

High ceilings throughout, spacious bedrooms, multiple living areas on a zero maintenance elongated block facing West. Located in Butlers South Eastern corner with immediate access to Lukin Drive Fwy exit & walking distance to Farmer Jacks Butler, Mcdonalds, Anytime fitness, 2 Petrol stations and choice of Primary and High Schools - Easy living!

HOME

- This home sits elevated from the street with extra car street parking out the front.
- Laneway access to tall clearance double carport plus rear walking access gate.
- Bedrooms are all found at the front of the home, all a great size, fit for any bed with built in robes (Master has walk in robe).
- Family bathroom, single vanity, glass panelled shower and skylight - separate from W/C.
- Master bedroom has a deep walk in robe and open ensuite bathroom.



Disclaimer: All information contained therein is gathered from relevant third parties sources. We cannot guarantee or give any warranty about the information provided. Interested parties must rely solely on their own enquiries.

SOLD



For Sale
UNDER OFFER

View
ljhooker.com.au/JD9HRD

Contact
Matt Hemsworth
0488 070 954
matthew.hemsworth@ljhooker.com.au

LJ Hooker Joondalup
(08) 9300 2100

- Kitchen with island bench sits in the middle of the home looking out to the middle courtyard (paved, shade sail, large area).
- 2 generously sized Living areas + dining.
- Laundry located at the rear of the house with access to Carport.

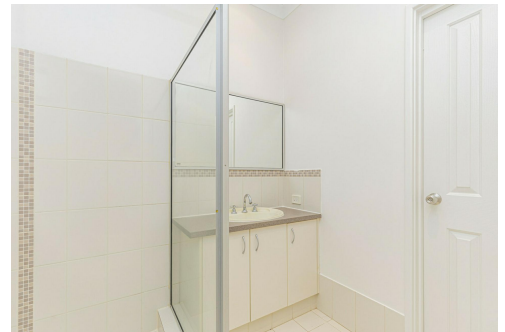
Contact Matt Hemsworth for more information.

More About this Property

Property ID	JD9HRD
Property Type	House
Including	Ensuite Toilets (2) Courtyard Outdoor Entertaining Built-in-Robes Secure Parking Fully Fenced Remote Garage Liveability

Matt Hemsworth 0488 070 954
 Residential Property Sales | matthew.hemsworth@ljhooker.com.au

LJ Hooker Joondalup (08) 9300 2100
 4/25 Delage Street, JOONDALUP WA 6027
joondalup.ljhooker.com.au | admin.joondalup@ljhooker.com.au



LJ Hooker Joondalup
(08) 9300 2100

Disclaimer: All information contained therein is gathered from relevant third parties sources. We cannot guarantee or give any warranty about the information provided. Interested parties must rely solely on their own enquiries.



89 Shepperton Drive, Butler

For information and guidance purpose only / measurements shown are approximate



LJ Hooker Joondalup
(08) 9300 2100

Disclaimer: All information contained therein is gathered from relevant third parties sources. We cannot guarantee or give any warranty about the information provided. Interested parties must rely solely on their own enquiries.