

Burwood, 4/18 Belmore Street

Full Brick Unit with Exceptional Convenience

Located in the heart of Burwood, this full brick unit offers a perfect blend of comfort and convenience.

Featuring a spacious bedroom with built-in wardrobe, a sleek bathroom, and a bright, open-plan living and dining area. The modern kitchen boasts stainless steel appliances, complemented by a large laundry and additional storage room with a second W.C.

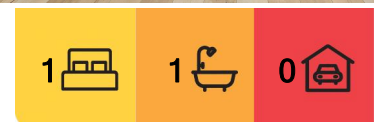
Positioned in one of Burwood's most sought-after spots, you'll be just a short stroll from Burwood train station, Burwood Plaza, Westfield Shopping Centre, and a range of local amenities. Whether you're an investor or looking for your next home, this is a rare opportunity not to be missed.

Total area: 63sqm

Strata levies: \$999 per quarter approx.



Disclaimer: All information contained therein is gathered from relevant third parties sources. We cannot guarantee or give any warranty about the information provided. Interested parties must rely solely on their own enquiries.



For Sale
For Sale \$650,000

View
By Appointment

Contact
Rong You
0424 433 888
rong@ljhburwood.com.au

LJ Hooker Burwood
(02) 9745 3999

Council rates: \$533 per quarter approx.

Water rates: \$180 per quarter approx.

More About this Property

Property ID	111BF8R
Property Type	Unit
Land Area	63 m2

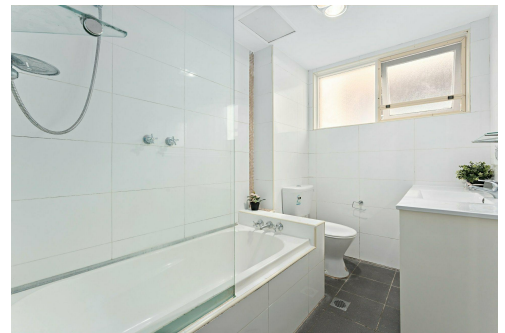
Rong You 0424 433 888

Sales | Licensed Real Estate Agent | rong@ljhburwood.com.au

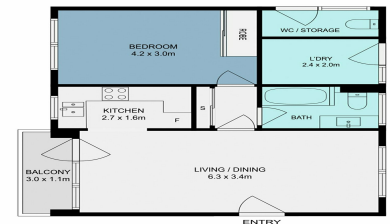
LJ Hooker Burwood (02) 9745 3999

Shop 2/27-29 Burwood Road, BURWOOD NSW 2134

burwood.ljhooker.com.au | burwood@ljhburwood.com.au



LJ Hooker



4/16 Belmore Street, Burwood

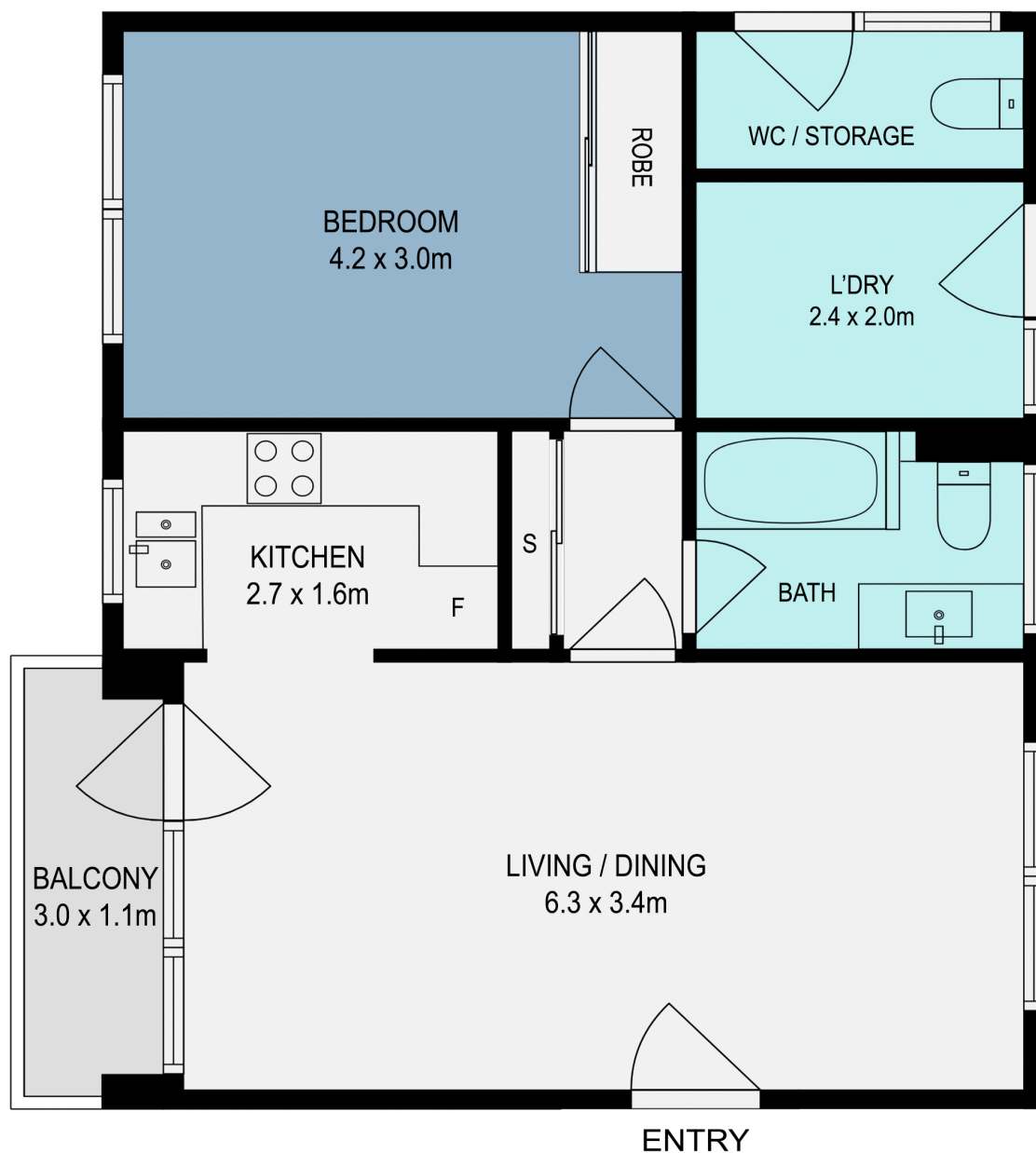
THIS IMAGE, THE PLAN, DRAWING, PHOTOGRAPHY OR VIDEO, IT DOES NOT CONSTITUTE ANY OF ANY LEGAL DOCUMENTS, AND IT'S DECISIONS ARE APPROXIMATE, RETURNED BY YOU. NO LIABILITY ACCEPTED. YOU MUST SEEK ADVICE FROM YOUR SOLICITOR.



Disclaimer: All information contained therein is gathered from relevant third parties sources.

We cannot guarantee or give any warranty about the information provided. Interested parties must rely solely on their own enquiries.

LJ Hooker Burwood
(02) 9745 3999



4/18 Belmore Street, Burwood

DISCLAIMER: THIS FLOOR PLAN IS INTENDED AS A GUIDE ONLY. IT DOES NOT CONSTITUTE PART OF ANY LEGAL DOCUMENTS. ALL DIMENSIONS ARE APPROXIMATE, ACTUAL MAY VARY. NO LIABILITY ACCEPTED. YOU MUST SEEK ADVICE FROM YOUR SOLICITOR. FLOOR PLAN BY WWW.MCPIXELSAU.COM