



307/5 Wilga Street, Burwood

2 🏠 2 🚿 1 🚗

Contemporary Urban Living in the Heart of Burwood

Discover modern living at its finest in this immaculately presented apartment, perfectly combining style, space, and convenience within a sought-after complex.

Boasting two generously sized bedrooms with built-in wardrobes, including a master with ensuite. The sleek kitchen features stone benchtops and premium stainless steel appliances, flowing seamlessly into the spacious open plan living and dining area. Step outside to a large balcony, perfect for alfresco entertaining.

The apartment also offers two modern bathrooms, ducted air conditioning, internal laundry, and secure basement parking.

Perfectly positioned just a short stroll to Burwood train station, Westfield Shopping Centre, Burwood Plaza, Burwood Park, vibrant cafes, restaurants, and some of the area's top schools, this apartment delivers an ultra-convenient lifestyle with strong investment appeal.

FOR SALE

Please Call

AGENTS

Joe Murania
0416 044 267
joe@ljhburwood.com.au

Rong You
0424 433 888
rong@ljhburwood.com.au

AGENCY

LJ Hooker Burwood
(02) 9745 3999

All information contained therein is gathered from relevant third parties sources. We cannot guarantee or give any warranty about the information provided. Interested parties must rely solely on their own enquiries.

 **LJ Hooker**

MORE DETAILS

Property ID 11SFF8R
Property Type Unit

Joe Murania 0416 044 267

Director | Sales Manager | joe@ljhburwood.com.au

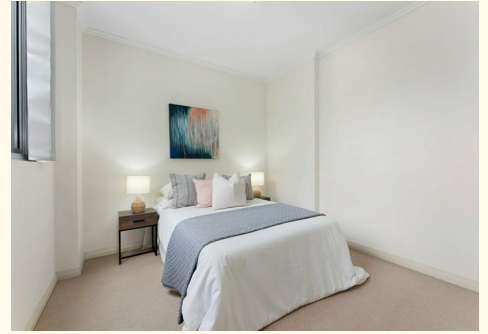
Rong You 0424 433 888

Sales | Licensed Real Estate Agent | rong@ljhburwood.com.au

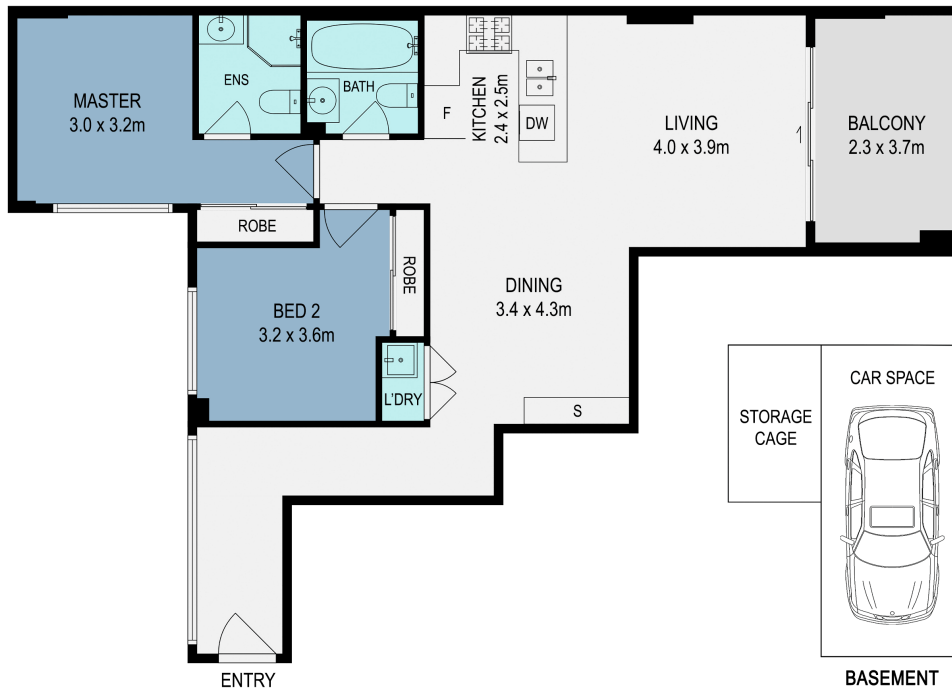
LJ Hooker Burwood (02) 9745 3999

Shop 2/27-29 Burwood Road, BURWOOD NSW 2134

burwood.ljhooker.com.au | burwood@ljhburwood.com.au



All information contained therein is gathered from relevant third parties sources.
We cannot guarantee or give any warranty about the information provided.
Interested parties must rely solely on their own enquiries.



307/5 Wilga Street, Burwood

DISCLAIMER: THIS FLOOR PLAN IS INTENDED AS A GUIDE ONLY. IT DOES NOT CONSTITUTE PART OF ANY LEGAL DOCUMENTS. ALL DIMENSIONS ARE APPROXIMATE, ACTUAL MAY VARY. NO LIABILITY ACCEPTED. YOU MUST SEEK ADVICE FROM YOUR SOLICITOR. FLOOR PLAN BY WWW.MCPIXELSAU.COM