



Burwood, 307/11-13 Burwood Road

Stylish Modern Apartment Offering Unmatched Convenience

Positioned within an architecturally designed modern complex, this impeccably maintained apartment offers quality finishes and thoughtful design throughout.

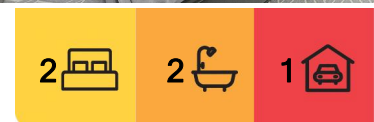
Featuring two generously sized bedrooms with built-in wardrobes (main with ensuite) and two sleek bathrooms, the home combines comfort with contemporary living. The designer kitchen is equipped with premium Miele stainless steel appliances, spacious open plan living and dining area flows effortlessly onto a large balcony.

Additional highlights include ducted air conditioning, internal laundry, secure basement parking, and a storage cage.

Conveniently located just a short stroll to Burwood train station, Westfield Shopping Centre, Burwood Park, vibrant cafes, restaurants, and some of the area's leading schools,



Disclaimer: All information contained therein is gathered from relevant third parties sources. We cannot guarantee or give any warranty about the information provided. Interested parties must rely solely on their own enquiries.



For Sale
For Sale

View
By Appointment

Contact
Rong You
0424 433 888
rong@ljhburwood.com.au

LJ Hooker Burwood
(02) 9745 3999

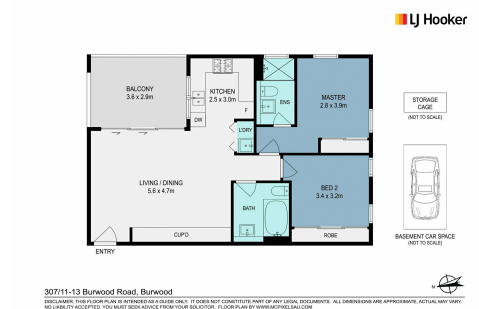
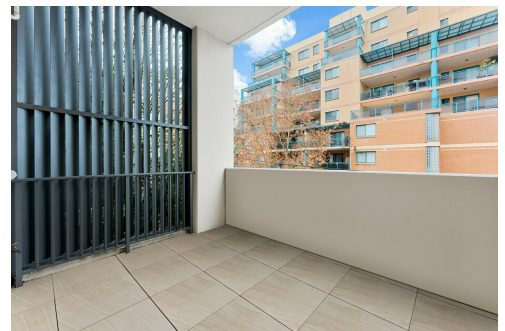
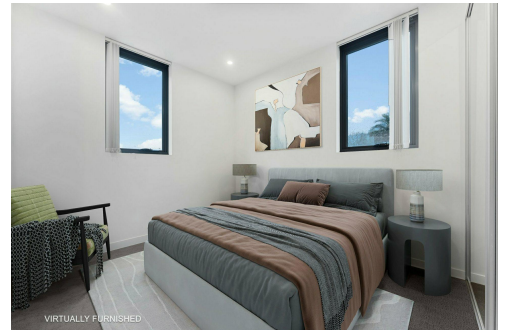
this property represents an outstanding opportunity to secure a premium apartment offering lifestyle, convenience, and excellent capital growth potential.

More About this Property

Property ID	11R8F8R
Property Type	Unit

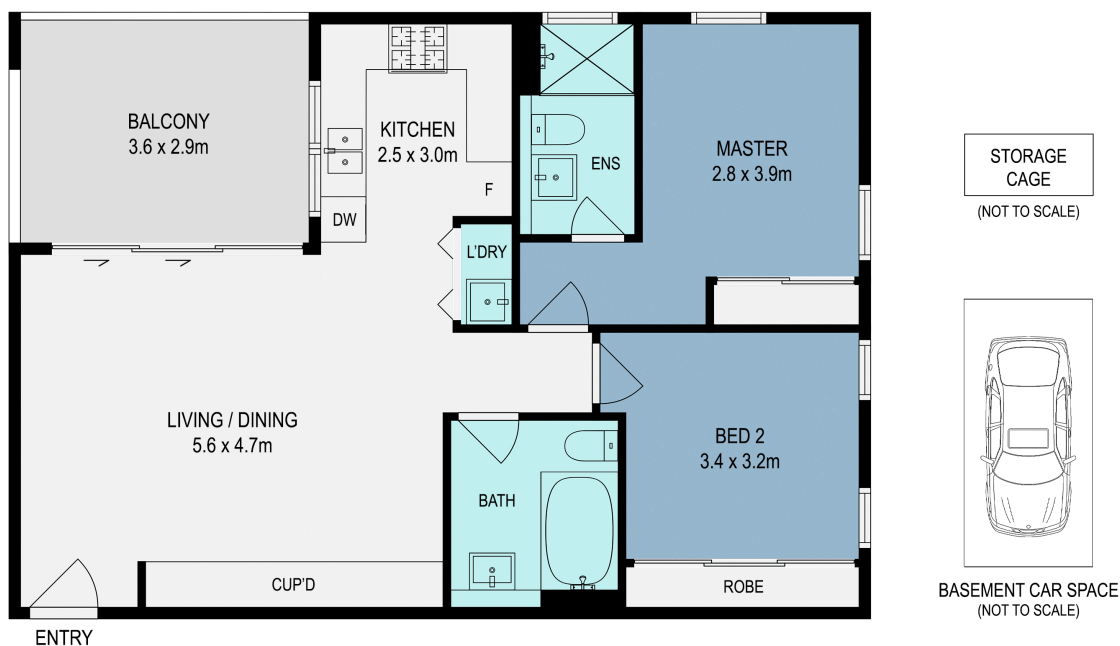
Rong You 0424 433 888
Sales | Licensed Real Estate Agent | rong@ljhburwood.com.au

LJ Hooker Burwood (02) 9745 3999
Shop 2/27-29 Burwood Road, BURWOOD NSW 2134
burwood.ljhooker.com.au | burwood@ljhburwood.com.au



Disclaimer: All information contained therein is gathered from relevant third parties sources. We cannot guarantee or give any warranty about the information provided. Interested parties must rely solely on their own enquiries.

LJ Hooker Burwood
(02) 9745 3999



307/11-13 Burwood Road, Burwood



DISCLAIMER: THIS FLOOR PLAN IS INTENDED AS A GUIDE ONLY. IT DOES NOT CONSTITUTE PART OF ANY LEGAL DOCUMENTS. ALL DIMENSIONS ARE APPROXIMATE, ACTUAL MAY VARY. NO LIABILITY ACCEPTED. YOU MUST SEEK ADVICE FROM YOUR SOLICITOR. FLOOR PLAN BY WWW.MCPixelsAU.COM