



Burwood, 205/11-13 Burwood Road

Sold by Rong You

Elegant Two Bedroom Apartment with Large Terrace

This beautifully presented apartment is situated in an architecturally designed modern complex, featuring high-quality finishes throughout with meticulous attention to detail.

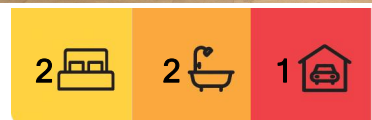
Showcasing two generously sized bedrooms, both with built-ins (main with ensuite), two stylish bathrooms, the sleek kitchen features a three meter island with breakfast bar and Miele stainless steel appliances. The spacious open-plan living and dining area seamlessly extends to a large terrace and an undercover balcony, perfect for entertaining.

Additional features include ducted air conditioning, internal laundry, secure basement parking, and a storage cage.

Perfectly located within a short stroll to Burwood train station, Westfield Shopping Centre,



Disclaimer: All information contained therein is gathered from relevant third parties sources. We cannot guarantee or give any warranty about the information provided. Interested parties must rely solely on their own enquiries.



For Sale
SOLD

View
ljhooker.com.au/1139F8R

Contact
Rong You
0424 433 888
rong@ljhburwood.com.au

LJ Hooker Burwood
(02) 9745 3999

Burwood Plaza, Burwood Park, cafes, restaurants, and some of the area's leading schools, this is an excellent opportunity to secure a great property in the heart of Burwood offering unmatched convenience and strong capital growth potential.

More About this Property

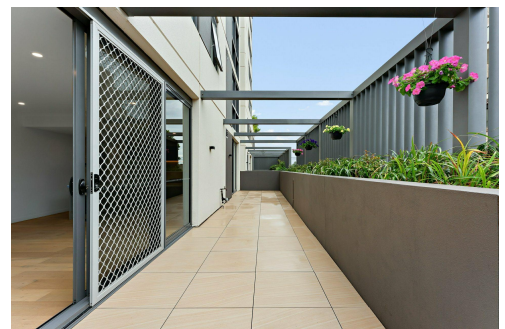
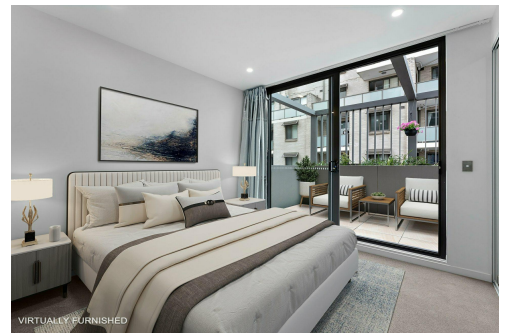
Property ID	1139F8R
Property Type	Unit
Land Area	132 m ²

Rong You 0424 433 888

Sales | Licensed Real Estate Agent | rong@ljhburwood.com.au

LJ Hooker Burwood (02) 9745 3999

Shop 2/27-29 Burwood Road, BURWOOD NSW 2134
burwood.ljhooker.com.au | burwood@ljhburwood.com.au



Disclaimer: All information contained therein is gathered from relevant third parties sources. We cannot guarantee or give any warranty about the information provided. Interested parties must rely solely on their own enquiries.

LJ Hooker Burwood
(02) 9745 3999



205/11-13 Burwood Road, Burwood

DISCLAIMER: THIS FLOOR PLAN IS INTENDED AS A GUIDE ONLY. IT DOES NOT CONSTITUTE PART OF ANY LEGAL DOCUMENTS. ALL DIMENSIONS ARE APPROXIMATE, ACTUAL MAY VARY. NO LIABILITY ACCEPTED. YOU MUST SEEK ADVICE FROM YOUR SOLICITOR. FLOOR PLAN BY WWW.MCPIXELSAU.COM