



1c/26 Belmore Street, Burwood

3 🏠 2 🚗 1 🚗

Rare 3 Bedroom North-Facing Apartment in a Super Convenient Location

FOR SALE
SOLD

AGENTS

Joe Murania
0416 044 267
joe@ljhburwood.com.au

AGENCY

LJ Hooker Burwood
(02) 9745 3999

Positioned on the first floor of a highly sought-after, full-brick security complex with lift access, this beautifully presented, north facing apartment offers a spacious, light-filled floor plan with 3 generous bedrooms, main with an updated ensuite and two with built-in wardrobes, a modern kitchen with quality appliances, a large main bathroom with separate bath and shower (which has also been updated), an internal laundry and a sundrenched, open-plan lounge and dining area which leads out to a sunny north-east facing balcony.

Parking is also provided by a carport which is accessed via Pilchers Lane, and the complex also features a communal swimming pool.

Perfectly located in one of Burwood's most convenient positions, within footsteps from Burwood's vibrant shops, cafes, restaurants, Chinatown and train station.

The perfect first home or investment you've been waiting for!

Strata \$1,144 per quarter

All information contained therein is gathered from relevant third parties sources. We cannot guarantee or give any warranty about the information provided. Interested parties must rely solely on their own enquiries.

 **LJ Hooker**

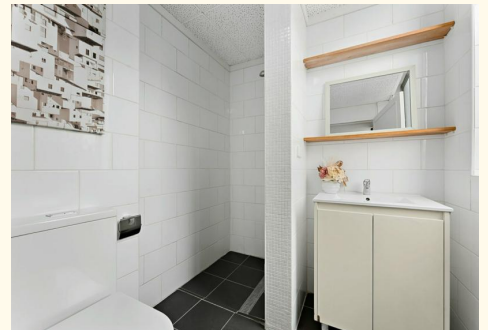
Council \$455 per quarter
Water \$179.94 per quarter
Internal 105.9 sqm + carport

MORE DETAILS

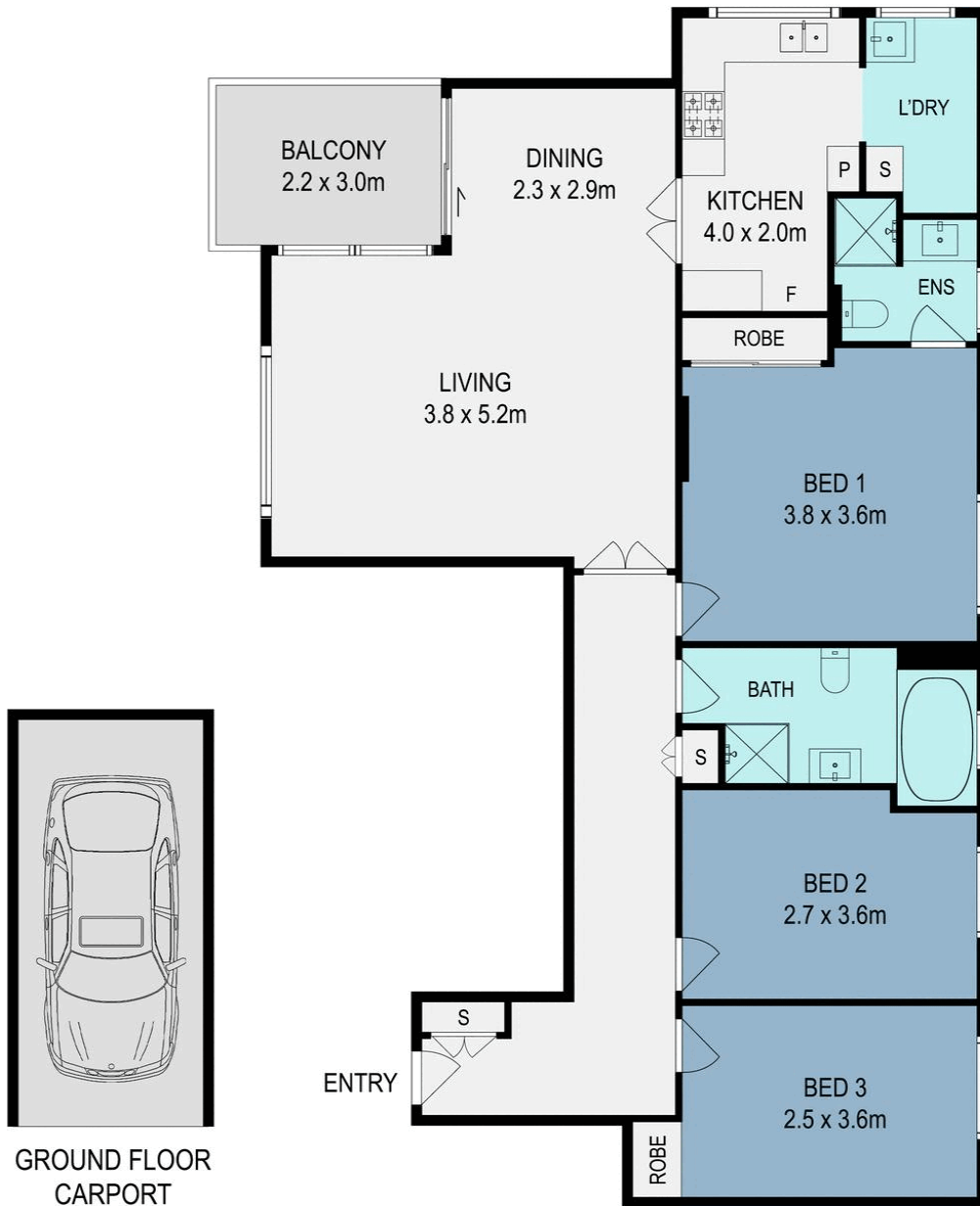
Property ID 11XEF8R
Property Type Unit

Joe Murania 0416 044 267
Director | Sales Manager | joe@ljhburwood.com.au

LJ Hooker Burwood (02) 9745 3999
Shop 2/27-29 Burwood Road, BURWOOD NSW 2134
burwood.ljhooker.com.au | burwood@ljhburwood.com.au



All information contained therein is gathered from relevant third parties sources.
We cannot guarantee or give any warranty about the information provided.
Interested parties must rely solely on their own enquiries.



1C/26 Belmore Street, Burwood



DISCLAIMER: THIS FLOOR PLAN IS INTENDED AS A GUIDE ONLY. IT DOES NOT CONSTITUTE PART OF ANY LEGAL DOCUMENTS. ALL DIMENSIONS ARE APPROXIMATE, ACTUAL MAY VARY. NO LIABILITY ACCEPTED. YOU MUST SEEK ADVICE FROM YOUR SOLICITOR. FLOOR PLAN BY WWW.MCPIXELSAU.COM