



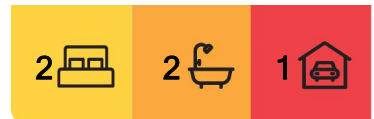
## Burwood, 16/3 Railway Parade

Stylish and Convenient Living in the Heart of Burwood

Nestled in the heart of Burwood, this exquisite full-brick apartment offers both style and convenience, promising a lifestyle of absolute ease. Just a stone's throw from Burwood train station, Burwood Plaza, Burwood Chinatown and Westfield Shopping Centre, this property presents an unmissable opportunity for home buyers, downsizers, and savvy investors alike.

Enjoy comfort in two spacious bedrooms, with the master bedroom featuring the luxury of an ensuite, a walk-in robe, and a private balcony for ultimate convenience. The modern kitchen boasts sleek granite benchtops and quality stainless steel appliances, while the open plan dining and living area seamlessly extends onto a generously sized balcony.

Additional features include two stylish bathrooms, internal laundry, air conditioning, quality tile and timber flooring, and secure basement parking.



**For Sale**  
For Sale

**View**  
Sat 26th Apr @ 1:00PM - 1:30PM

**Contact**  
**Rong You**  
0424 433 888  
rong@ljhburwood.com.au



**LJ Hooker Burwood**  
**(02) 9745 3999**

**Disclaimer:** All information contained therein is gathered from relevant third parties sources. We cannot guarantee or give any warranty about the information provided. Interested parties must rely solely on their own enquiries.

With solid rental potential and an unbeatable location, this apartment is an exceptional opportunity for homeowners and investors seeking both immediate returns and long term growth.

Total area: 113sqm

## More About this Property

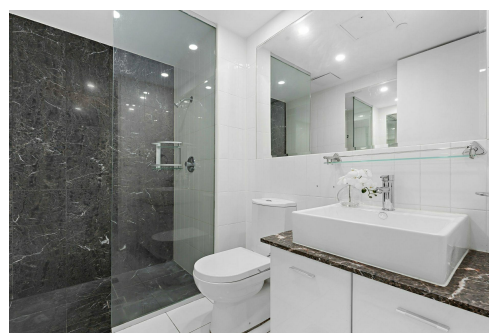
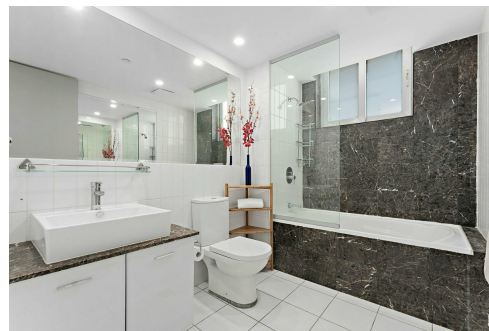
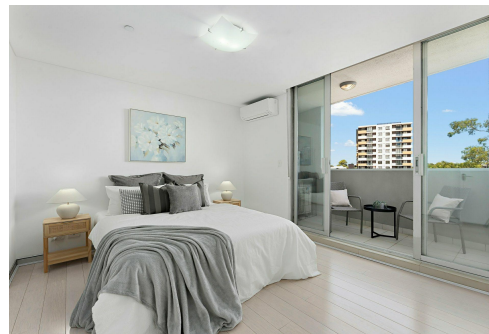
<b>Property ID</b>	11DNF8R
<b>Property Type</b>	Unit
<b>Land Area</b>	113 m <sup>2</sup>

**Rong You 0424 433 888**

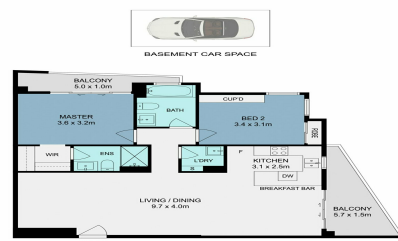
Sales | Licensed Real Estate Agent | [rong@ljhburwood.com.au](mailto:rong@ljhburwood.com.au)

**LJ Hooker Burwood (02) 9745 3999**

Shop 2/27-29 Burwood Road, BURWOOD NSW 2134  
[burwood.ljhooker.com.au](http://burwood.ljhooker.com.au) | [burwood@ljhburwood.com.au](mailto:burwood@ljhburwood.com.au)



**LJ Hooker**



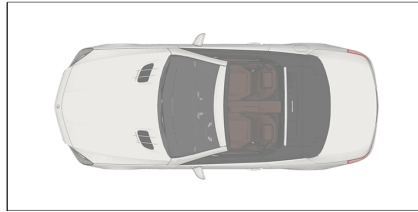
16/3 Railway Parade, Burwood  
DISCLAIMER: THIS FLOOR PLAN IS INTENDED AS A GUIDE ONLY. IT DOES NOT CONSTITUTE PART OF ANY LEGAL DOCUMENTS. P/L



**LJ Hooker Burwood**  
**(02) 9745 3999**

**Disclaimer:** All information contained therein is gathered from relevant third parties sources. We cannot guarantee or give any warranty about the information provided. Interested parties must rely solely on their own enquiries.





BASEMENT CAR SPACE



16/3 Railway Parade, Burwood



DISCLAIMER: THIS FLOOR PLAN IS INTENDED AS A GUIDE ONLY. IT DOES NOT CONSTITUTE PART OF ANY LEGAL DOCUMENTS. ALL DIMENSIONS ARE APPROXIMATE, ACTUAL MAY VARY. NO LIABILITY ACCEPTED. YOU MUST SEEK ADVICE FROM YOUR SOLICITOR. FLOOR PLAN BY WWW.MCPIXELSAU.COM