



13/8-10 Gloucester Avenue, Burwood

Sold by Joe Murania

Rare Find, Low-Rise Complex With Huge Future Potential in a High Growth Area

Perfectly positioned in the heart of Burwood, this well-presented first-floor apartment offers an outstanding opportunity for both investors and owner-occupiers alike. Just 400 metres from Burwood Train Station and Westfield Shopping Centre, convenience truly meets comfort in this highly sought-after address.

Constructed in solid full-brick, the residence enjoys a practical and light-filled layout featuring two well-proportioned bedrooms, including a main with built-in wardrobe. A modern bathroom complements the home, while the open-plan kitchen and living area flows seamlessly out to a large balcony—ideal for relaxing or entertaining.

Set within a boutique complex, the property also includes basement parking for added peace of mind. With strong rental appeal and positioned in an undercapitalised complex, this apartment represents an incredibly smart investment with future upside.

A fantastic entry into the Burwood market or a savvy addition to your portfolio—this is an opportunity not to be missed.

2  1  1 

FOR SALE

Please Call

AGENTS

Joe Murania
0416 044 267
joe@ljhburwood.com.au

AGENCY

LJ Hooker Burwood
(02) 9745 3999

All information contained therein is gathered from relevant third parties sources. We cannot guarantee or give any warranty about the information provided. Interested parties must rely solely on their own enquiries.

 **LJ Hooker**

MORE DETAILS

Property ID 12BGF8R
Property Type Unit

Joe Murania 0416 044 267

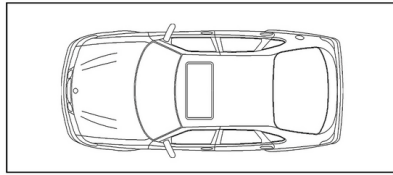
Director | Sales Manager | joe@ljhburwood.com.au

LJ Hooker Burwood (02) 9745 3999

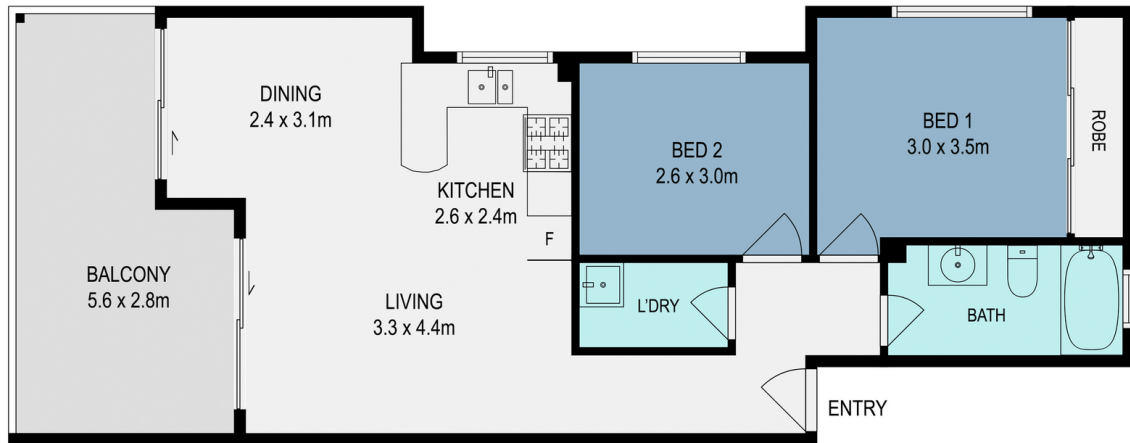
Shop 2/27-29 Burwood Road, BURWOOD NSW 2134
burwood.ljhooker.com.au | burwood@ljhburwood.com.au



All information contained therein is gathered from relevant third parties sources.
We cannot guarantee or give any warranty about the information provided.
Interested parties must rely solely on their own enquiries.



SECURITY CAR SPACE (NOT TO SCALE)



13/8-10 Gloucester Avenue, Burwood



DISCLAIMER: THIS FLOOR PLAN IS INTENDED AS A GUIDE ONLY. IT DOES NOT CONSTITUTE PART OF ANY LEGAL DOCUMENTS. ALL DIMENSIONS ARE APPROXIMATE, ACTUAL MAY VARY. NO LIABILITY ACCEPTED. YOU MUST SEEK ADVICE FROM YOUR SOLICITOR. FLOOR PLAN BY WWW.MCPixelsAU.COM