



## Burwood, 12/38-40 Meryla Street

SOLD BY JOE MURANIA

Spacious North Facing Apartment In Burwood's Most Convenient Position.

Perfectly located in a highly sought-after full-brick complex literally around the corner from Westfield shopping Centre and Train Station, this immaculately presented apartment features two spacious bedrooms with built-in wardrobes, a large modern kitchen and bathroom, a second toilet in the laundry, and an oversized living room which leads out to a spacious north facing balcony.

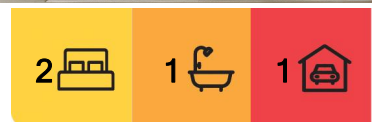
Recently renovated, the apartment has been freshly painted with new blinds, light fittings and flooring throughout and is ready to move in and enjoy.

The property also features lift access and secure parking in the basement.

Located only 100 meters to beautiful Burwood Park, Westfield shopping, cafes and



**Disclaimer:** All information contained therein is gathered from relevant third parties sources. We cannot guarantee or give any warranty about the information provided. Interested parties must rely solely on their own enquiries.



**For Sale**  
\$888,000

**View**  
[ljhooker.com.au/11AZF8R](http://ljhooker.com.au/11AZF8R)

**Contact**  
**Joe Murania**  
0416 044 267  
[joe@ljhburwood.com.au](mailto:joe@ljhburwood.com.au)

**LJ Hooker Burwood**  
(02) 9745 3999

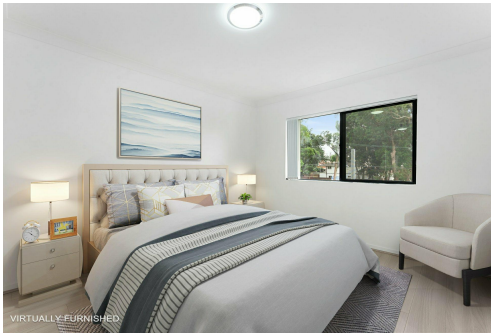
restaurants.

## More About this Property

Property ID	11AZF8R
Property Type	Unit

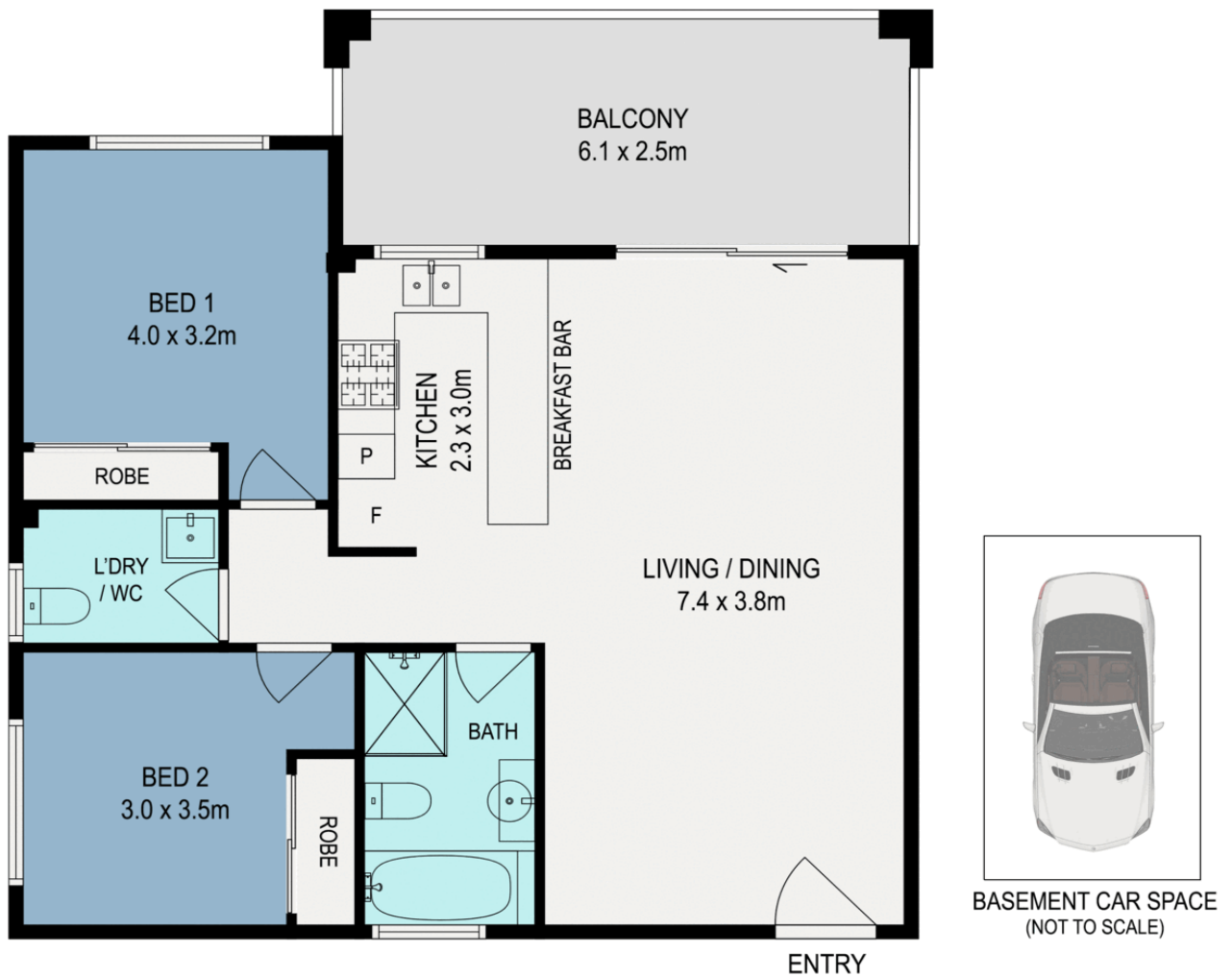
**Joe Murania 0416 044 267**  
Director | Sales Manager | [joe@ljhburwood.com.au](mailto:joe@ljhburwood.com.au)

**LJ Hooker Burwood (02) 9745 3999**  
Shop 2/27-29 Burwood Road, BURWOOD NSW 2134  
[burwood.ljhooker.com.au](mailto:burwood.ljhooker.com.au) | [burwood@ljhburwood.com.au](mailto:burwood@ljhburwood.com.au)



**Disclaimer:** All information contained therein is gathered from relevant third parties sources.  
We cannot guarantee or give any warranty about the information provided. Interested parties must rely solely on their own enquiries.

**LJ Hooker Burwood**  
**(02) 9745 3999**



12/38-40 Meryla Street, Burwood



DISCLAIMER: THIS FLOOR PLAN IS INTENDED AS A GUIDE ONLY. IT DOES NOT CONSTITUTE PART OF ANY LEGAL DOCUMENTS. ALL DIMENSIONS ARE APPROXIMATE, ACTUAL MAY VARY. NO LIABILITY ACCEPTED. YOU MUST SEEK ADVICE FROM YOUR SOLICITOR. FLOOR PLAN BY WWW.MCPIXELSAU.COM