

## Burwood, 1/40 Belmore Street

Sold By Joe Murania

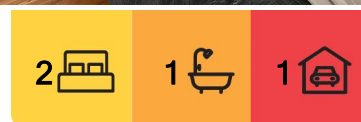
North East Facing Apartment With an Oversized Lock Up Garage.

Live the best of Burwood's lifestyle in one of the areas most conveniently positions; directly opposite Emerald Square, where you can eat, shop, play with some of the area's best entertainment, restaurants and nightlife right at your fingertips.

This full-brick, two bedroom apartment is located on the first floor of one of Belmore Streets' few remaining undeveloped blocks.

Conveniently positioned at the front of the building and featuring two bedrooms (main facing north and second facing east, a modern kitchen and bathroom, a generous living area with air conditioning, and a full width north facing balcony.

The real bonus lies with the apartments double garage for two small cars located directly



**For Sale**  
**SOLD**

**View**  
[ljhooker.com.au/11B1F8R](http://ljhooker.com.au/11B1F8R)

**Contact**  
**Joe Murania**  
0416 044 267  
[joe@ljhburwood.com.au](mailto:joe@ljhburwood.com.au)



**Disclaimer:** All information contained therein is gathered from relevant third parties sources. We cannot guarantee or give any warranty about the information provided. Interested parties must rely solely on their own enquiries.

**LJ Hooker Burwood**  
**(02) 9745 3999**

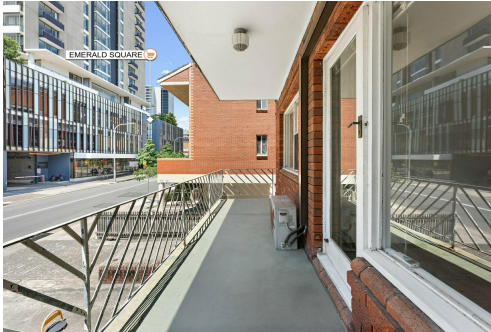
below the apartment itself. With parking this close to Burwood commercial precinct becoming increasingly difficult and valuable, whether it's a first home or investment this is a rare opportunity with upside you simply cannot go wrong with.

## More About this Property

Property ID	11B1F8R
Property Type	Unit

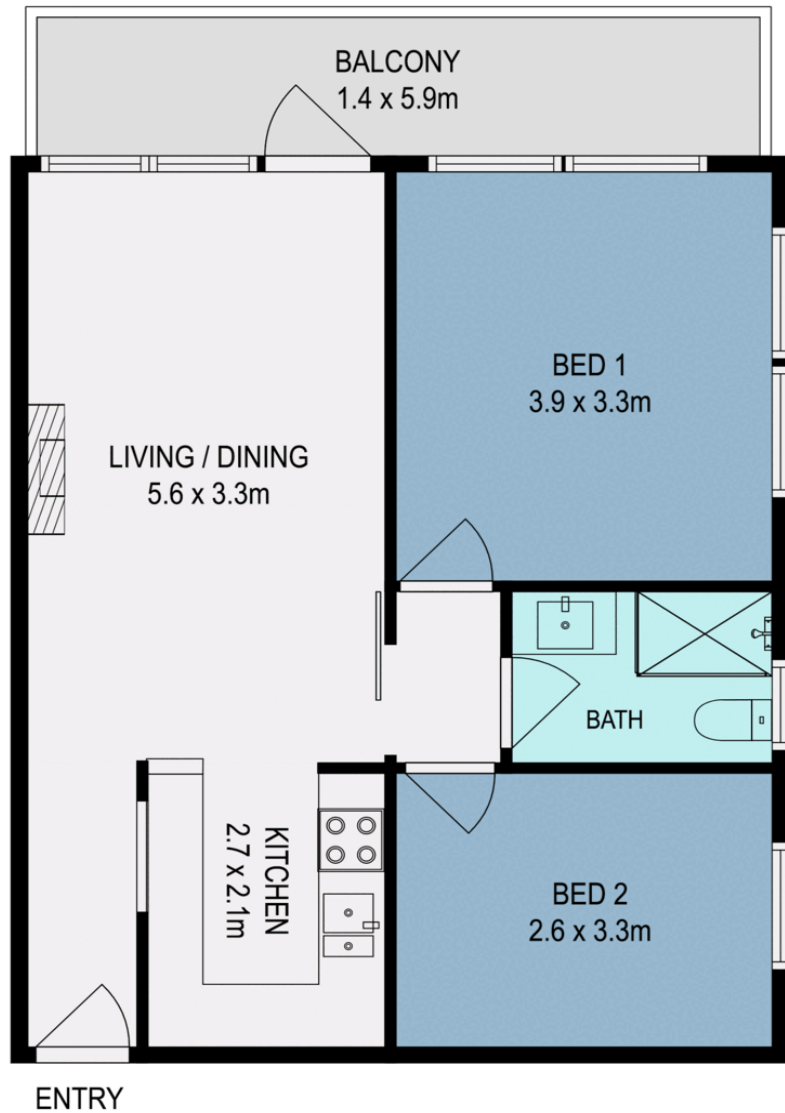
**Joe Murania 0416 044 267**  
Director | Sales Manager | [joe@ljhburwood.com.au](mailto:joe@ljhburwood.com.au)

**LJ Hooker Burwood (02) 9745 3999**  
Shop 2/27-29 Burwood Road, BURWOOD NSW 2134  
[burwood.ljhooker.com.au](http://burwood.ljhooker.com.au) | [burwood@ljhburwood.com.au](mailto:burwood@ljhburwood.com.au)



**Disclaimer:** All information contained therein is gathered from relevant third parties sources.  
We cannot guarantee or give any warranty about the information provided. Interested parties must rely solely on their own enquiries.

**LJ Hooker Burwood**  
**(02) 9745 3999**



1/40 Belmore Street, Burwood



DISCLAIMER: THIS FLOOR PLAN IS INTENDED AS A GUIDE ONLY. IT DOES NOT CONSTITUTE PART OF ANY LEGAL DOCUMENTS. ALL DIMENSIONS ARE APPROXIMATE, ACTUAL MAY VARY. NO LIABILITY ACCEPTED. YOU MUST SEEK ADVICE FROM YOUR SOLICITOR. FLOOR PLAN BY WWW.MCPIXELSAU.COM