



Burwood, 44-44a Shaftesbury Road

Sold By Joe Murania

Rare 2x2 Bedroom Victorian Semis on a Huge 954.8m2 with Rear Access

Available for the first time in over 60 years, a rare and exciting opportunity to purchase a full-brick pair of semis in a most convenient position only 250 meters from Westfield Shopping Centre and only footsteps away from every major attraction Burwood has to offer.

Each semi features 2 spacious bedrooms, functional kitchens and bathrooms, large living rooms, towering ornate ceilings, marble fireplaces and air conditioners throughout.

Step out the rear to a large garden with a massive 4 car garage - accessible via a wide side driveway, plus another single garage with right-of-way access via a rear laneway.

A perfect home or investment opportunity to either live in or generate passive income from



Disclaimer: All information contained therein is gathered from relevant third parties sources. We cannot guarantee or give any warranty about the information provided. Interested parties must rely solely on their own enquiries.



For Sale
Sold By Joe Murania

View
ljhooker.com.au/11HFF8R

Contact
Joe Murania
0416 044 267
joe@ljhburwood.com.au

LJ Hooker Burwood
(02) 9745 3999

one or both – the choice is yours.

The property has no Heritage or Conservation restrictions and is positioned on an elevated 954.8m2 block with a 16.7 metre frontage.

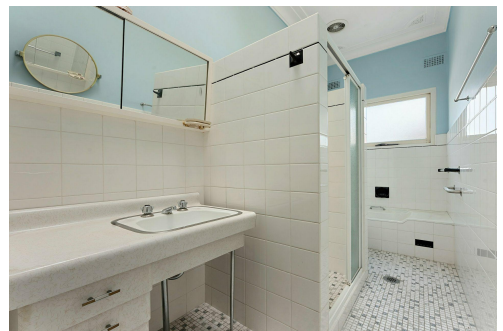
Offering re-development potential (STCA).

More About this Property

Property ID	11HFF8R
Property Type	House

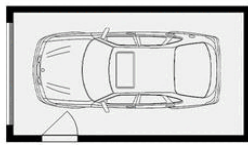
Joe Murania 0416 044 267
Director | Sales Manager | joe@ljhburwood.com.au

LJ Hooker Burwood (02) 9745 3999
Shop 2/27-29 Burwood Road, BURWOOD NSW 2134
burwood.ljhooker.com.au | burwood@ljhburwood.com.au

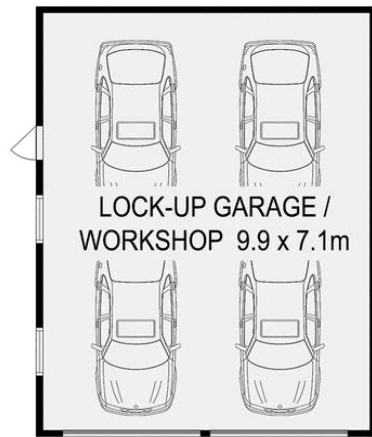


Disclaimer: All information contained therein is gathered from relevant third parties sources.
We cannot guarantee or give any warranty about the information provided. Interested parties must rely solely on their own enquiries.

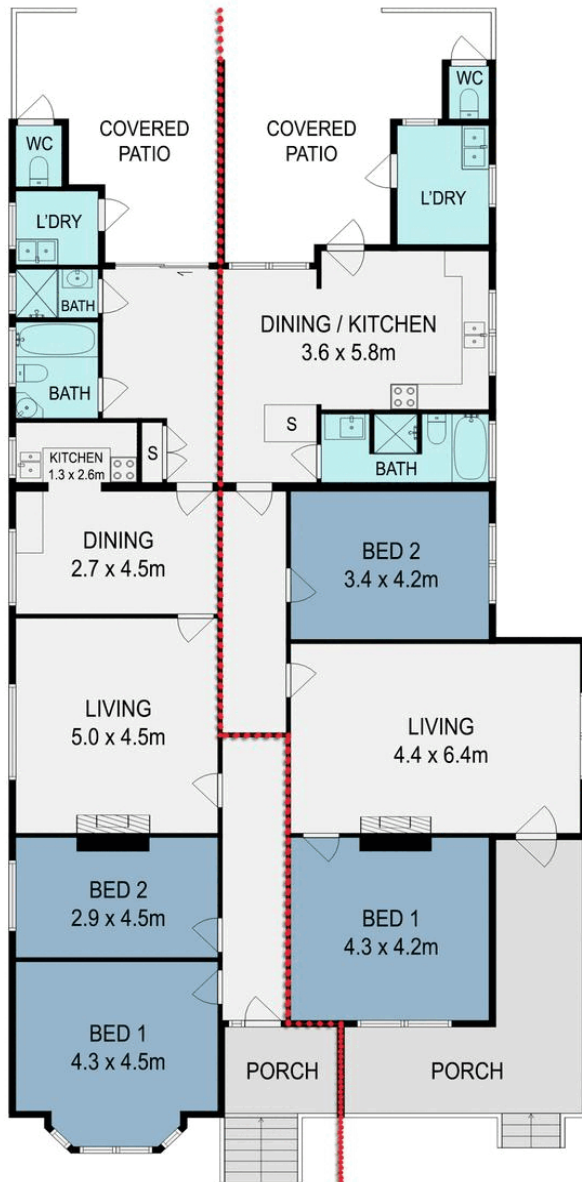
LJ Hooker Burwood
(02) 9745 3999



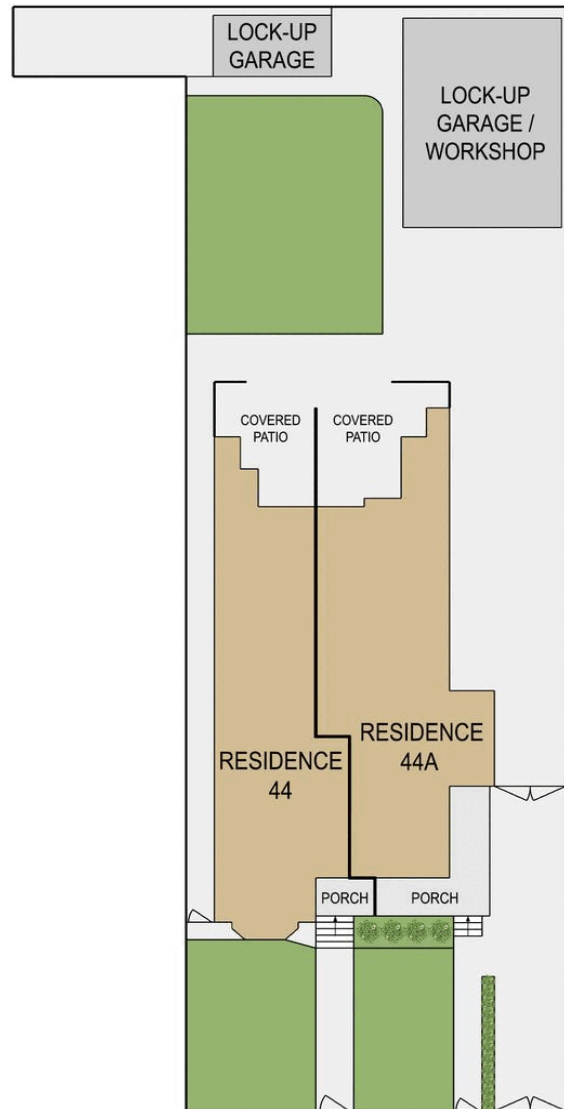
LOCK-UP GARAGE
2.8 x 5.3m



LOCK-UP GARAGE /
WORKSHOP 9.9 x 7.1m



44 Shaftesbury Road 44A Shaftesbury Road



SITE PLAN
(NOT TO SCALE)

44 & 44A Shaftesbury Road, Burwood



DISCLAIMER: THIS FLOOR PLAN IS INTENDED AS A GUIDE ONLY. IT DOES NOT CONSTITUTE PART OF ANY LEGAL DOCUMENTS. ALL DIMENSIONS ARE APPROXIMATE, ACTUAL MAY VARY. NO LIABILITY ACCEPTED. YOU MUST SEEK ADVICE FROM YOUR SOLICITOR. FLOOR PLAN BY WWW.MCPIXELSAU.COM