

Burwood, 3 Clifton Avenue

Prime Position, Immense Potential! 942sqm

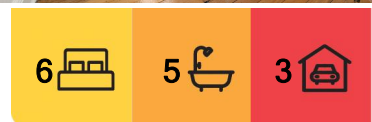
Rare opportunity to acquire this period style brick home set on approximately 942sqm of prime real estate. With a frontage to Clifton Street of approximately 18.75 metres and only a short walk to the Burwood central business district, shopping centre and train station, this opportunity really is too good to pass by. Offering a combination of period style features and updated amenities with a versatile layout perfect for either the growing or three-generational family or investor looking to capitalise on the available accommodation.

Features Include:

- Versatile layout perfect for the growing family
- 6 bedrooms all with ensuites
- Separate oversized lounge room
- Undercover outdoor entertainment area
- Large grassed rear yard



Disclaimer: All information contained therein is gathered from relevant third parties sources. We cannot guarantee or give any warranty about the information provided. Interested parties must rely solely on their own enquiries.



For Sale
Auction

View
ljhooker.com.au/19R6F8B

Contact
Domenic Bucciarelli
0411 199 466
domenic@ljha.com.au
Mo Yassih
0473 172 464
mo@ljha.com.au

LJ Hooker Ashfield
(02) 9797 6044

- Deep Side driveway to a large carport at the rear

Prestigious schools such as MLC, PLC and Meriden College are all nearby. An opportunity not to be missed!

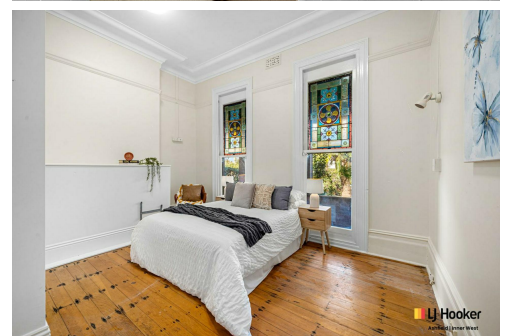
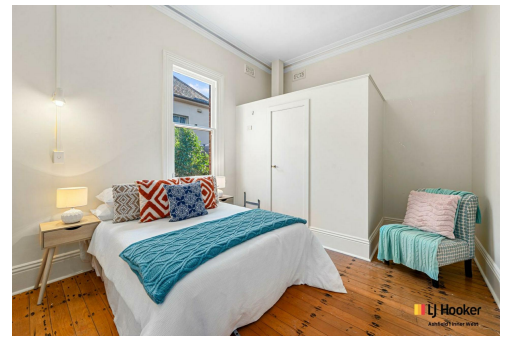
DISCLAIMER: This advertisement contains information provided by third parties. While all care is taken to ensure otherwise, LJ Hooker Ashfield does not make any representation as to the accuracy of the information contained in the advertisement, does not accept any responsibility or liability and recommends that any client make their own investigations and enquiries. All images are indicative of the property only.

More About this Property

Property ID	19R6F8B
Property Type	House
Land Area	942 m ²
Including	Toilets (1) Dishwasher Floorboards

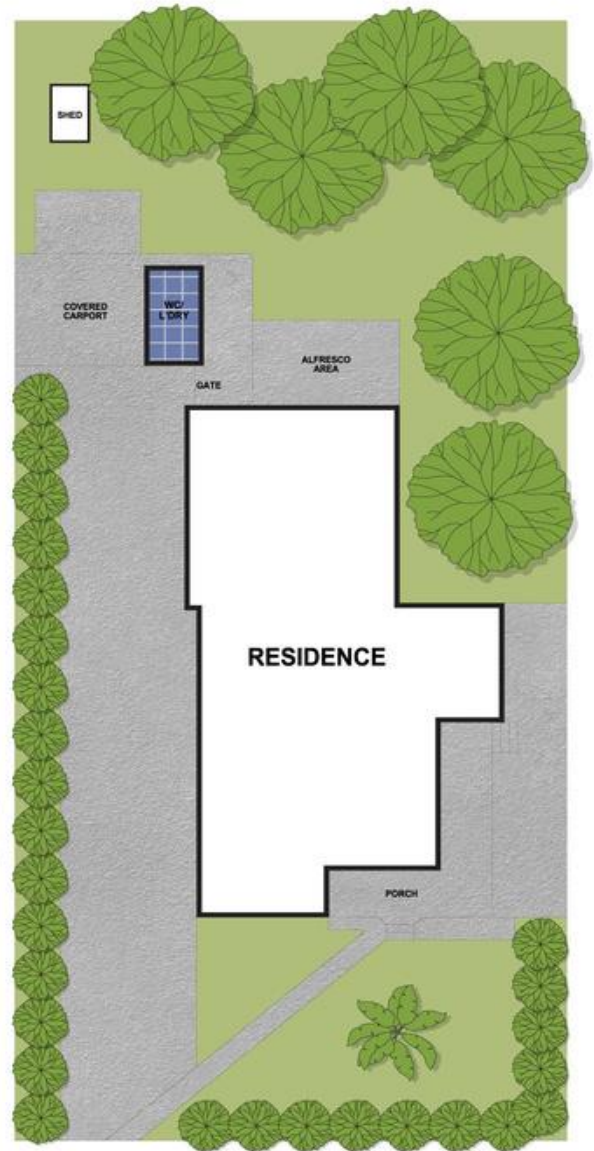
Domenic Bucciarelli 0411 199 466
Principal-Licensee in Charge | domenic@ljha.com.au
Mo Yassih 0473 172 464
Sales Associate | mo@ljha.com.au

LJ Hooker Ashfield (02) 9797 6044
216 Liverpool Road, ASHFIELD NSW 2131
ashfield.ljhooker.com.au | ashfield@ljha.com.au



Disclaimer: All information contained therein is gathered from relevant third parties sources. We cannot guarantee or give any warranty about the information provided. Interested parties must rely solely on their own enquiries.

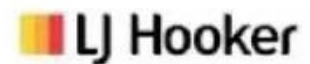
LJ Hooker Ashfield
(02) 9797 6044



3 CLIFTON AVENUE, BURWOOD

DISCLAIMER

PLANS SHOWN ARE FOR MARKETING PURPOSES ONLY. ALL DIMENSIONS ARE APPROXIMATE AND NOT TO SCALE. THEY ARE SUBJECT TO ERRORS AND INACCURACIES AND NO LIABILITY WILL BE ACCEPTED. INTERESTED PARTIES SHOULD MAKE THEIR OWN ENQUIRIES.



LJ Hooker Ashfield
(02) 9797 6044

Disclaimer: All information contained therein is gathered from relevant third parties sources. We cannot guarantee or give any warranty about the information provided. Interested parties must rely solely on their own enquiries.