

## Burwood, 24A Mount Pleasant Avenue

Beautifully Presented Family Home In A Prime Location.

Architecturally designed, this young master built split level home is perfectly positioned and offers a spacious and functional layout throughout.

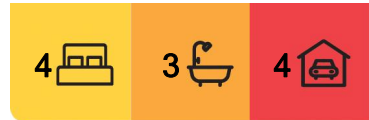
Enter the home via an extra wide entrance hallway to discover spacious living and dining areas which feature a cosy wood fireplace and exposed timber beams from a towering raked ceiling. Inclusive of a family-sized open-plan kitchen with granite bench tops, gas cooking, and a large main bathroom.

The home is uniquely designed on multiple levels featuring four private bedrooms. The ground level bedroom offers its own courtyard and split air conditioning, two bedrooms have ensuite bathrooms and built-in wardrobes. Polished brush box timber floors and ducted air conditioning is featured throughout.

Step out the rear to a neat, low-maintenance garden with a gazebo for easy outdoor



**Disclaimer:** All information contained therein is gathered from relevant third parties sources. We cannot guarantee or give any warranty about the information provided. Interested parties must rely solely on their own enquiries.



**For Sale**  
SOLD

**View**  
[ljhooker.com.au/1128F8R](http://ljhooker.com.au/1128F8R)

**Contact**  
**Joe Murania**  
0416 044 267  
[joe@ljhburwood.com.au](mailto:joe@ljhburwood.com.au)

**LJ Hooker Burwood**  
(02) 9745 3999

entertaining, storage shed and a fully paved and landscaped garden with mature fruit trees.

Secure parking is also provided by a double lock-up-garage with extra storage and direct internal access. Further off-street parking for two more cars is also available.

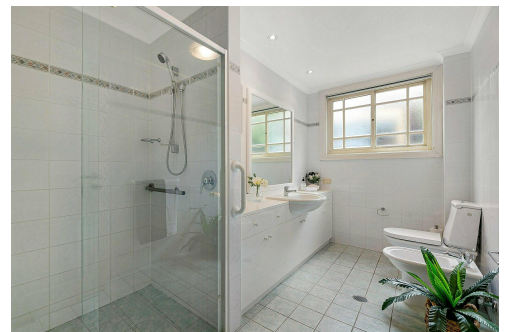
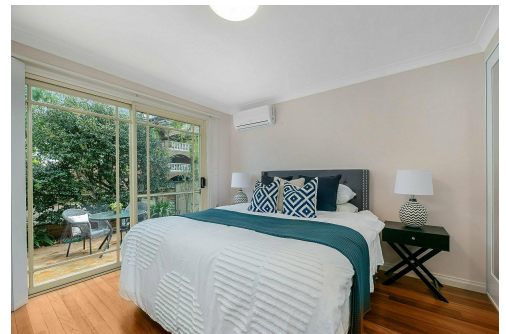
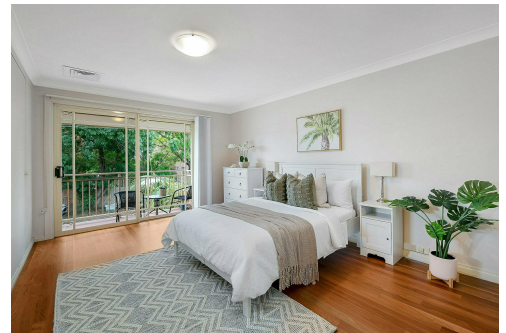
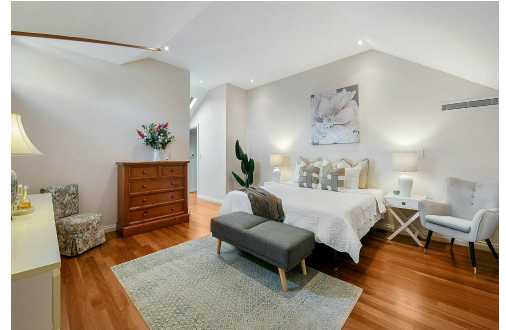
On the market for the first time since being built, this is a rare and exciting opportunity to purchase a much-loved family home. The home is located in a highly sought after quiet street within easy reach of both Strathfield and Burwood's leading schools, shops, parks, restaurants, cafe's and train stations.

## More About this Property

<b>Property ID</b>	1128F8R
<b>Property Type</b>	House
<b>Land Area</b>	375 m <sup>2</sup>

**Joe Murania 0416 044 267**  
Director | Sales Manager | [joe@ljhburwood.com.au](mailto:joe@ljhburwood.com.au)

**LJ Hooker Burwood (02) 9745 3999**  
Shop 2/27-29 Burwood Road, BURWOOD NSW 2134  
[burwood.ljhooker.com.au](http://burwood.ljhooker.com.au) | [burwood@ljhburwood.com.au](mailto:burwood@ljhburwood.com.au)



**LJ Hooker Burwood**  
**(02) 9745 3999**

**Disclaimer:** All information contained therein is gathered from relevant third parties sources. We cannot guarantee or give any warranty about the information provided. Interested parties must rely solely on their own enquiries.



All information contained herein is gathered from all sources we believe to be reliable. However we cannot guarantee its accuracy and interested parties should rely on their own enquiries.



# 24A Mt Pleasant Avenue, Burwood