



12 Shaftesbury Road, Burwood


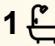
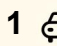
Sold by Joe Murania

Tightly held for over 60 years this well presented family home is perfectly positioned only 400 metres from both Westfield shopping and the up-and-coming Metro.

Currently featuring a full-brick family home with 3 spacious bedrooms, a solid timber kitchen with gas cooking, an updated bathroom and separate lounge and dining rooms.

Parking is also provided by a carport at the front of the home and a side driveway leads through to a super deep and level rear garden.

Conveniently located within easy walking distance from sought-after schools, shops, cafes, restaurants and train station.

3  1  1 

FOR SALE
SOLD

AGENTS

Joe Murania
0416 044 267
joe@ljhburwood.com.au

AGENCY

LJ Hooker Burwood
(02) 9745 3999

All information contained therein is gathered from relevant third parties sources.
We cannot guarantee or give any warranty about the information provided.
Interested parties must rely solely on their own enquiries.

 **LJ Hooker**

MORE DETAILS

Property ID 122YF8R
Property Type House

Joe Murania 0416 044 267

Director | Sales Manager | joe@ljhburwood.com.au

LJ Hooker Burwood (02) 9745 3999

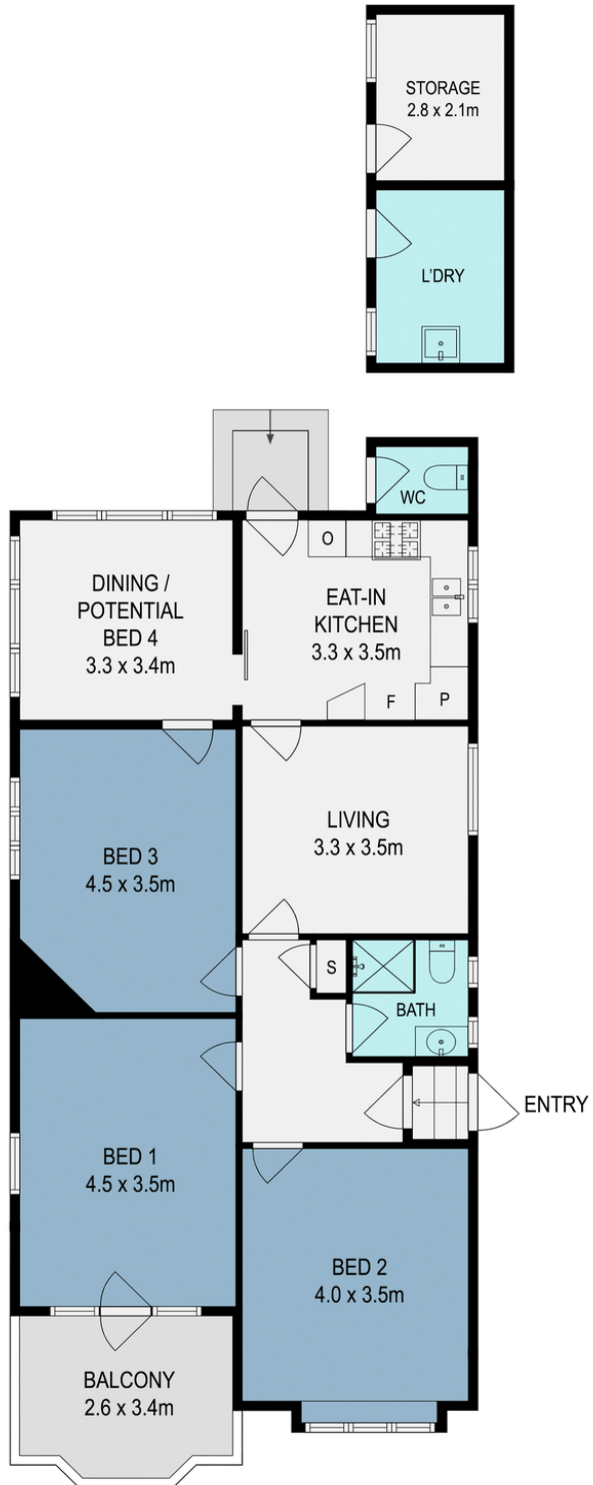
Shop 2/27-29 Burwood Road, BURWOOD NSW 2134
burwood.ljhooker.com.au | burwood@ljhburwood.com.au



All information contained therein is gathered from relevant third parties sources.
We cannot guarantee or give any warranty about the information provided.
Interested parties must rely solely on their own enquiries.



SITE PLAN
(NOT TO SCALE)



12 Shaftesbury Road, Burwood



DISCLAIMER: THIS FLOOR PLAN IS INTENDED AS A GUIDE ONLY. IT DOES NOT CONSTITUTE PART OF ANY LEGAL DOCUMENTS. ALL DIMENSIONS ARE APPROXIMATE, ACTUAL MAY VARY. NO LIABILITY ACCEPTED. YOU MUST SEEK ADVICE FROM YOUR SOLICITOR. FLOOR PLAN BY WWW.MCPIXELSAU.COM