



11 Shaftesbury Road, Burwood

Sold by Joe Murania

Never-to-be-Repeated Opportunity in Burwood's Prime Development Precinct

Perfectly positioned to capitalise on huge future growth with the Burwood North Precinct Master Plan underway. This is a once in a lifetime opportunity to secure a magnificent corner block, available for the first time in 40 years.

Currently featuring a much-loved family home with four generous bedrooms plus a study, a huge open-plan timber kitchen with granite benchtops and gas cooking, a spacious bathroom and a large separate living area.

Step out the rear to an undercover entertainment area which overlooks a neat and private low maintenance garden with mature fruit trees.

Secure parking is also provided via Milton Street to a double lock up garage, carport, plus further off-street parking.

Conveniently located only 400 metres from the upcoming Burwood North Metro Station and within easy walking distance from Westfield shops, schools, parks, train station and everything else this ever-

4 🏠 1 🚗 3 🚗

FOR SALE
SOLD

AGENTS

Joe Murania
0416 044 267
joe@ljhburwood.com.au

AGENCY

LJ Hooker Burwood
(02) 9745 3999

All information contained therein is gathered from relevant third parties sources.
We cannot guarantee or give any warranty about the information provided.
Interested parties must rely solely on their own enquiries.

 **LJ Hooker**

growing area has to offer.

The property has no Heritage or Conservation restrictions.

Your future fortune awaits with this incredibly rare and exciting opportunity - it's either now or never!

MORE DETAILS

Property ID	11QUF8R
Property Type	House
Land Area	476.8 m2

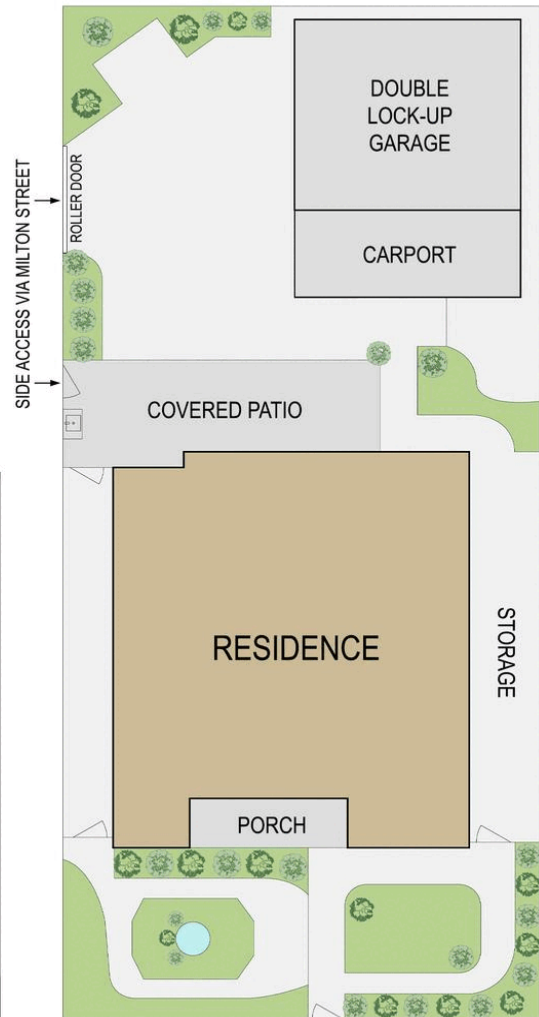
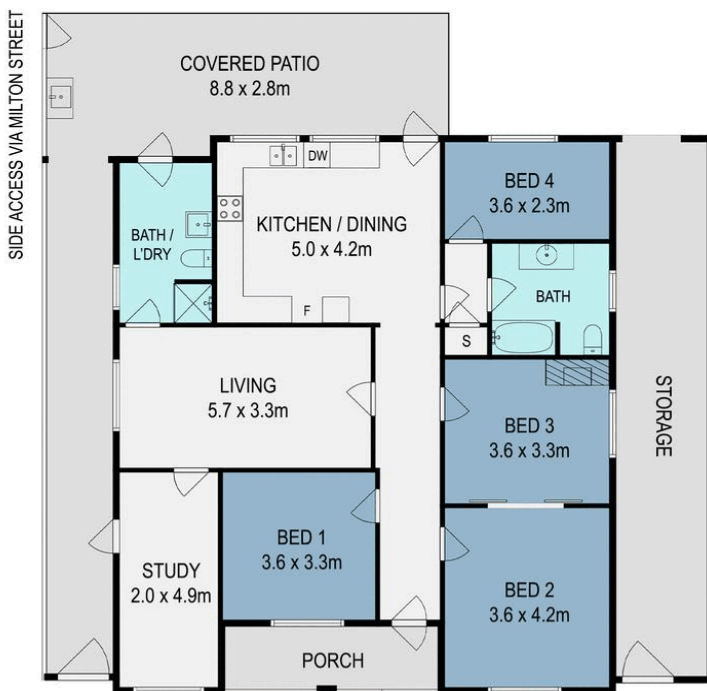
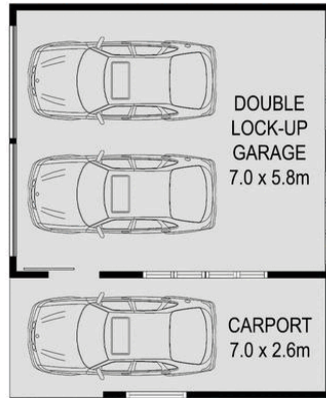
Joe Murania 0416 044 267

Director | Sales Manager | joe@ljhburwood.com.au

LJ Hooker Burwood (02) 9745 3999

Shop 2/27-29 Burwood Road, BURWOOD NSW 2134
burwood.ljhooker.com.au | burwood@ljhburwood.com.au





SITE PLAN
(NOT TO SCALE)

11 Shaftesbury Road, Burwood



DISCLAIMER: THIS FLOOR PLAN IS INTENDED AS A GUIDE ONLY. IT DOES NOT CONSTITUTE PART OF ANY LEGAL DOCUMENTS. ALL DIMENSIONS ARE APPROXIMATE, ACTUAL MAY VARY. NO LIABILITY ACCEPTED. YOU MUST SEEK ADVICE FROM YOUR SOLICITOR. FLOOR PLAN BY WWW.MCPIXELSAU.COM