



1 Gladstone Street, Burwood

5 🚗 3 🚗 3 🚗

Grand Federation Home With A Highly Versatile Dual-Level Floorplan In Burwood's Premiere Position

FOR SALE

Auction

VIEW

Sat 20th Jun @ 10:00AM - 10:30AM

AGENTS

Joe Murania

0416 044 267

joe@ljhburwood.com.au

AGENCY

LJ Hooker Burwood

(02) 9745 3999

Rarely does an opportunity arise to acquire such a grand and unique Federation Queen Anne style property in an unbeatable location, so close to everything Burwood and Strathfield has to offer. "Baverley" stands high and proud with a hugely versatile floorplan suitable for the large family or multi-generational living with 3 separate accommodations and entrances.

Space & Versatility:

- Offering a total of 5 bedrooms, 3 bathrooms, a study, multiple living and cooking areas
- An expansive driveway accommodating at least 3-4 cars - a rarity in this high-density pocket
- Freshly renovated and ready for immediate move-in
- Built to Last: Solid double-brick construction, well-maintained throughout with towering ornate ceilings, leadlight glass, original timber work and marble fireplaces.

Proximity to amenities:

All information contained therein is gathered from relevant third parties sources. We cannot guarantee or give any warranty about the information provided. Interested parties must rely solely on their own enquiries.



- Dual-Station Access: Minutes on foot to both Burwood and Strathfield stations
- Future-Proofed: Easy walking distance to the upcoming Burwood North Metro, guaranteeing long-term capital growth and connectivity.
- Footsteps from Burwood Park, Westfield shopping Centre, cafes, restaurants and the vibrant Burwood Chinatown dining precinct.

Perfectly positioned in one of the area's most tightly-held and highly desired positions, offering a multitude of uses/potential income streams with capital growth assured.

MORE DETAILS

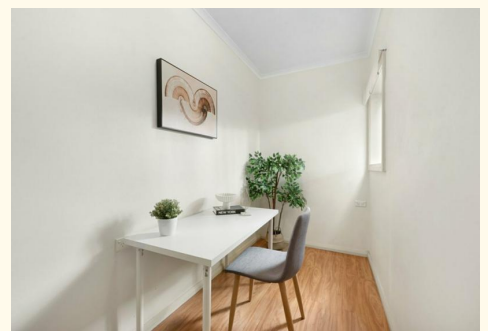
Property ID 12DVF8R
 Property Type House

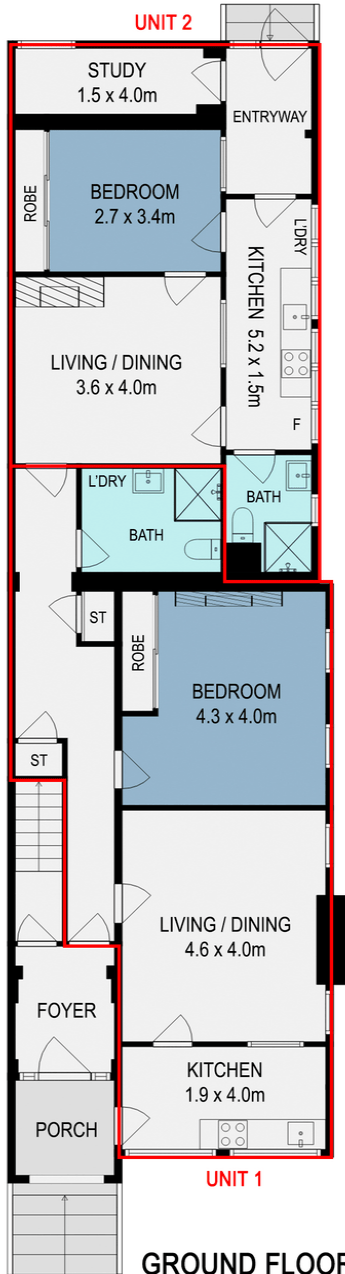
Joe Murania 0416 044 267

Director | Sales Manager | joe@ljhburwood.com.au

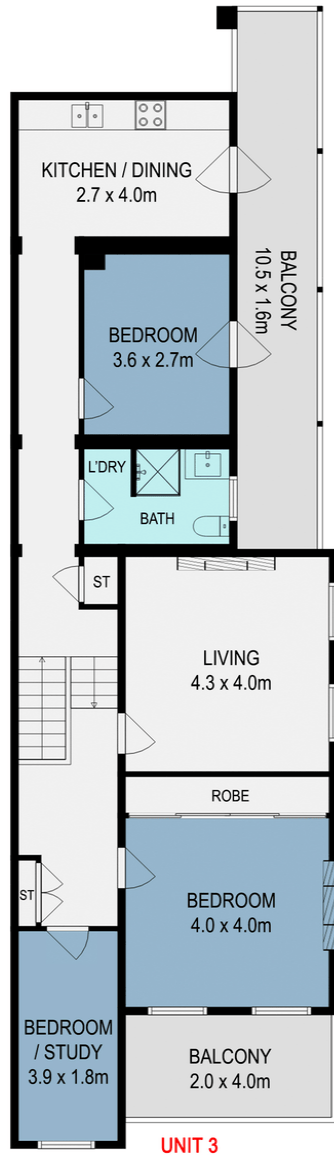
LJ Hooker Burwood (02) 9745 3999

Shop 2/27-29 Burwood Road, BURWOOD NSW 2134
burwood.ljhooker.com.au | burwood@ljhburwood.com.au

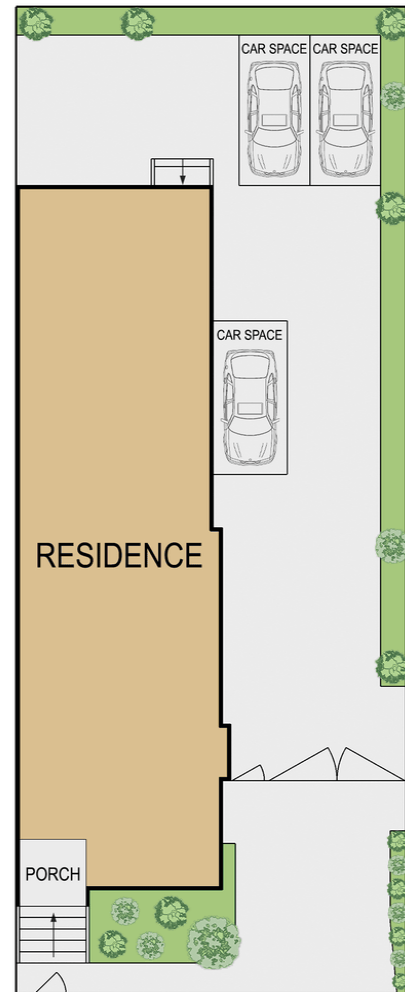




GROUND FLOOR
(UNIT 1 & 2)



FIRST FLOOR
(UNIT 3)



SITE PLAN
(NOT TO SCALE)



1 Gladstone Street, Burwood

DISCLAIMER: THIS FLOOR PLAN IS INTENDED AS A GUIDE ONLY. IT DOES NOT CONSTITUTE PART OF ANY LEGAL DOCUMENTS. ALL DIMENSIONS ARE APPROXIMATE, ACTUAL MAY VARY. NO LIABILITY ACCEPTED. YOU MUST SEEK ADVICE FROM YOUR SOLICITOR. FLOOR PLAN BY WWW.MCPixelsAU.COM