
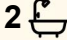



G028/67 Shaftesbury Road, Burwood

3  2  1 

SOLD PRIOR TO AUCTION

Enjoy contemporary comfort in this beautifully presented 3 bedroom apartment, located in a sought-after pocket of Burwood. Positioned on the elevated ground floor, it combines open plan living with modern interiors and a versatile study space perfect for working from home. A short stroll to Burwood Train Station, Westfield and bustling local high street, this apartment delivers exceptional convenience and lifestyle.

Set in a secure, well-maintained complex, this property is ideal for those seeking low-maintenance living in the heart of the Inner West.

- Light-Filled Living - Open plan layout with tiled floors and seamless outdoor flow
- Stylish Kitchen - Stone benchtops, gas cooking and stainless steel appliances
- Private Bedrooms - Three generously sized rooms, most with built-in wardrobes
- Work-From-Home - Dedicated study space ideal for remote work or studio space
- Contemporary Bathrooms - Two modern bathrooms with floor-to-ceiling tiles
- Outdoor Escape - Covered balcony with leafy outlook, perfect for relaxing or entertaining
- Secure Parking - Basement car space with storage cage in a security garage

FOR SALE
SOLD PRIOR TO AUCTION

AGENTS

Adrian Abrook
0412 569 800
adrian@ljha.com.au

AGENCY

LJ Hooker Ashfield
(02) 9797 6044

All information contained therein is gathered from relevant third parties sources.
We cannot guarantee or give any warranty about the information provided.
Interested parties must rely solely on their own enquiries.

 **LJ Hooker**

- Year-Round Comfort - Ducted air-con throughout and internal laundry with dryer
- Added Security - Video intercom, lift access and a well-maintained complex
- Resident Facilities - Access to a fully equipped on-site gym and common courtyard

With everything at your doorstep, this home is perfectly positioned to enjoy the best of Burwood's vibrant urban lifestyle. Don't miss your opportunity to live in a quality apartment in an unbeatable location.

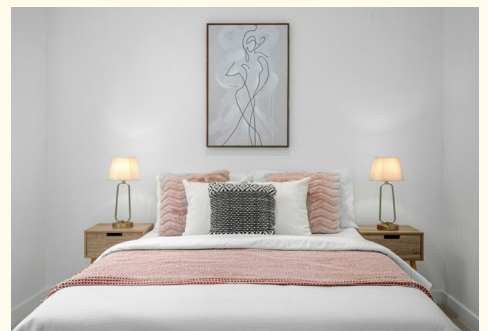
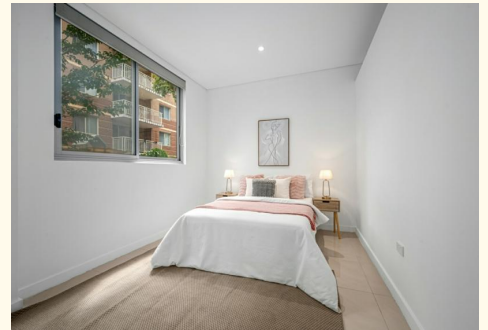
DISCLAIMER: This advertisement contains information provided by third parties. While all care is taken to ensure otherwise, LJ Hooker Ashfield does not make any representation as to the accuracy of the information contained in the advertisement, does not accept and responsibility or liability and recommends that any client make their own investigations and enquiries. All images are indicative of the property only.

MORE DETAILS

Property ID 1AJ9F8B
 Property Type Apartment

Adrian Abrook 0412 569 800
 Sales Manager | adrian@ljha.com.au

LJ Hooker Ashfield (02) 9797 6044
 216 Liverpool Road, ASHFIELD NSW 2131
ashfield.ljhooker.com.au | ashfield@ljha.com.au





G28/67 SHAFTESBURY ROAD, BURWOOD

DISCLAIMER

PLANS SHOWN ARE FOR MARKETING PURPOSES ONLY, ALL DIMENSIONS ARE APPROXIMATE AND NOT TO SCALE. THEY ARE SUBJECT TO ERRORS AND INACCURACIES AND NO LIABILITY WILL BE ACCEPTED. INTERESTED PARTIES SHOULD MAKE THEIR OWN ENQUIRIES.

All information contained therein is gathered from relevant third parties sources.
We cannot guarantee or give any warranty about the information provided.
Interested parties must rely solely on their own enquiries.