

Burwood, 310/65 Shaftesbury Road

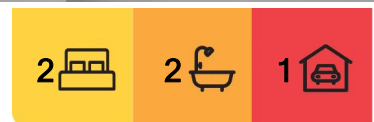
Resort Style Apartment With Excellent Location

Perfectly located within easy walking distance to Burwood Train Station and Westfield Shopping Centre, this beautifully presented two bedroom apartment offers a perfect blend of comfort and convenience.

Features include two generously sized bedrooms both with built-ins (main with ensuite), spacious open plan living and dining area flows onto a large balcony, quality timber floors throughout, modern kitchen with gas cooking, spacious main bathroom with separate bathtub and shower and an internal laundry with toilet.

This apartment also offers secure basement parking, a storage cage, resort style facilities which include Gym, heated outdoor pool, Sauna & Spa, BBQ area, small kids playground and on-site manager.

This is a wonderful opportunity for the first home buyer or investor to secure this tightly



For Sale
SOLD

View
ljhooker.com.au/1115F8R

Contact
Rong You
0424 433 888
rong@ljhburwood.com.au



Disclaimer: All information contained therein is gathered from relevant third parties sources. We cannot guarantee or give any warranty about the information provided. Interested parties must rely solely on their own enquiries.

LJ Hooker Burwood
(02) 9745 3999

held complex which is perfectly located within a short walk to everything Burwood has to offer.

More About this Property

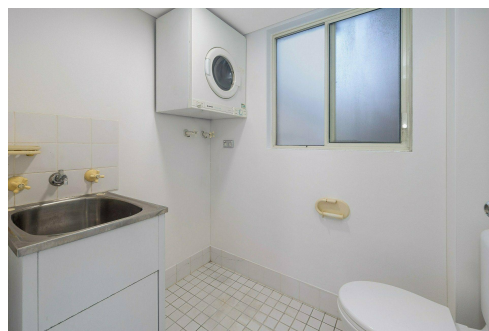
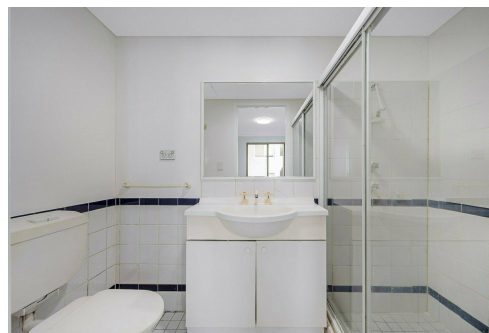
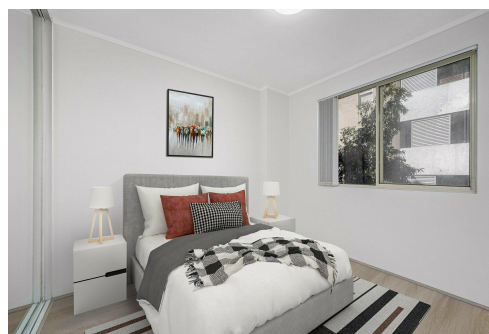
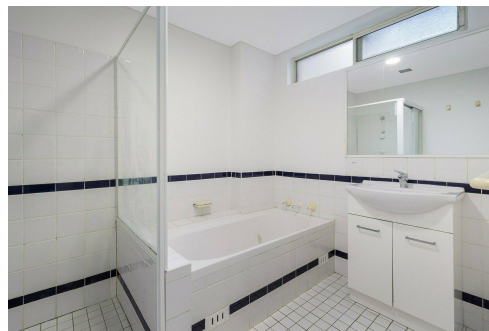
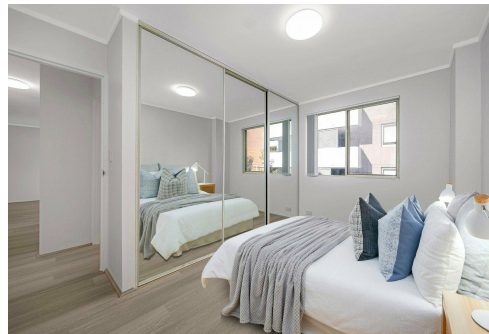
Property ID	1115F8R
Property Type	Apartment
Land Area	111 m ²

Rong You 0424 433 888

Sales | Licensed Real Estate Agent | rong@ljhburwood.com.au

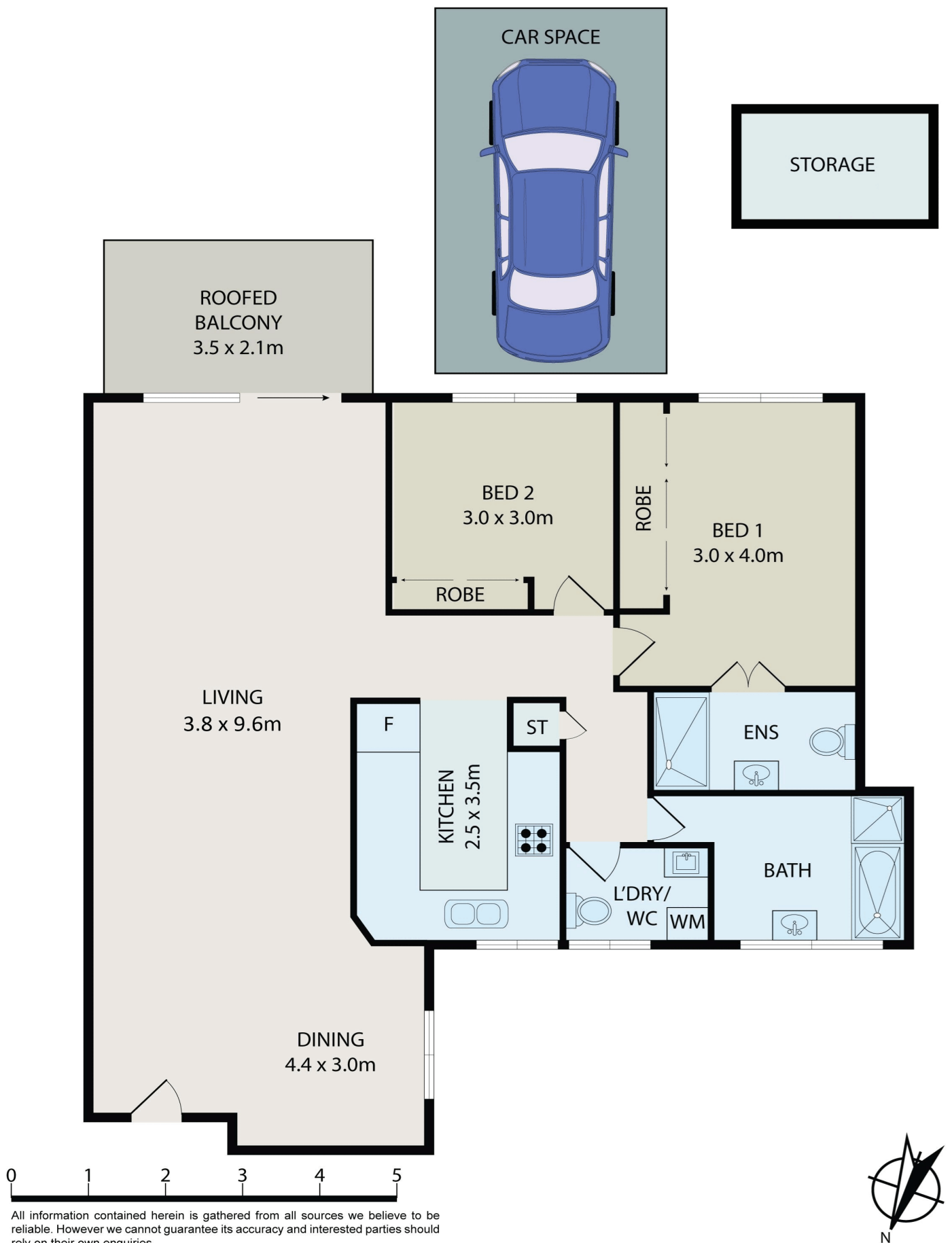
LJ Hooker Burwood (02) 9745 3999

Shop 2/27-29 Burwood Road, BURWOOD NSW 2134
burwood.ljhooker.com.au | burwood@ljhburwood.com.au



Disclaimer: All information contained therein is gathered from relevant third parties sources.
We cannot guarantee or give any warranty about the information provided. Interested parties must rely solely on their own enquiries.

LJ Hooker Burwood
(02) 9745 3999



310/65 Shaftesbury Road, Burwood



LJ Hooker Burwood
(02) 9745 3999

Disclaimer: All information contained therein is gathered from relevant third parties sources.
We cannot guarantee or give any warranty about the information provided. Interested parties must rely solely on their own enquiries.