



Sold



3/16-22 Burwood Road, Burwood

Sold By Rong You

North-East Facing Full Brick Apartment Offering Space, Style & Convenience

Superbly located within easy walking distance to Burwood Station, Westfield Shopping Centre, Burwood Park and a selection of highly regarded local schools, this impressive residence delivers the perfect balance of space, comfort and lifestyle convenience.

Enjoying a desirable north eastern aspect, the apartment is filled with natural light throughout. It features two well-proportioned bedrooms with built-in wardrobes, including a master bedroom complete with a private ensuite. The generous open plan living and dining area creates a welcoming space ideal for both everyday living and entertaining.

A standout feature is the expansive terrace, offering an undercover section and ample open space, perfect for outdoor dining, gatherings with family and friends, or simply relaxing in your own private retreat.

The modern gas kitchen is equipped with granite benchtops and quality stainless steel appliances. Additional features include two stylish bathrooms, an internal laundry, and two secure basement car spaces for added convenience.

2 🏠 2 🚿 2 🚗

FOR SALE
SOLD

AGENTS

Rong You
0424 433 888
rong@ljhburwood.com.au

AGENCY

LJ Hooker Burwood
(02) 9745 3999

All information contained therein is gathered from relevant third parties sources. We cannot guarantee or give any warranty about the information provided. Interested parties must rely solely on their own enquiries.



Whether you are looking for a comfortable home or a smart investment opportunity, this property presents exceptional value with strong rental appeal in the vibrant heart of Burwood.

MORE DETAILS

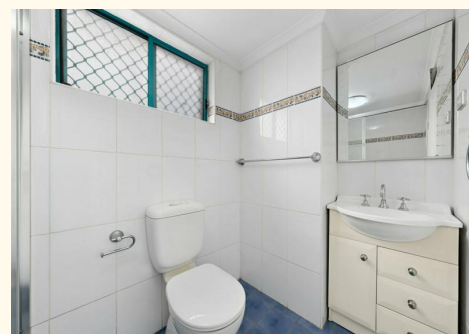
Property ID 1298F8R
Property Type Apartment

Rong You 0424 433 888

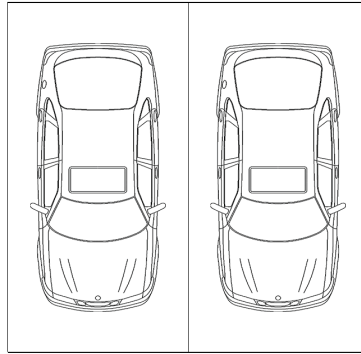
Sales | Licensed Real Estate Agent | rong@ljhburwood.com.au

LJ Hooker Burwood (02) 9745 3999

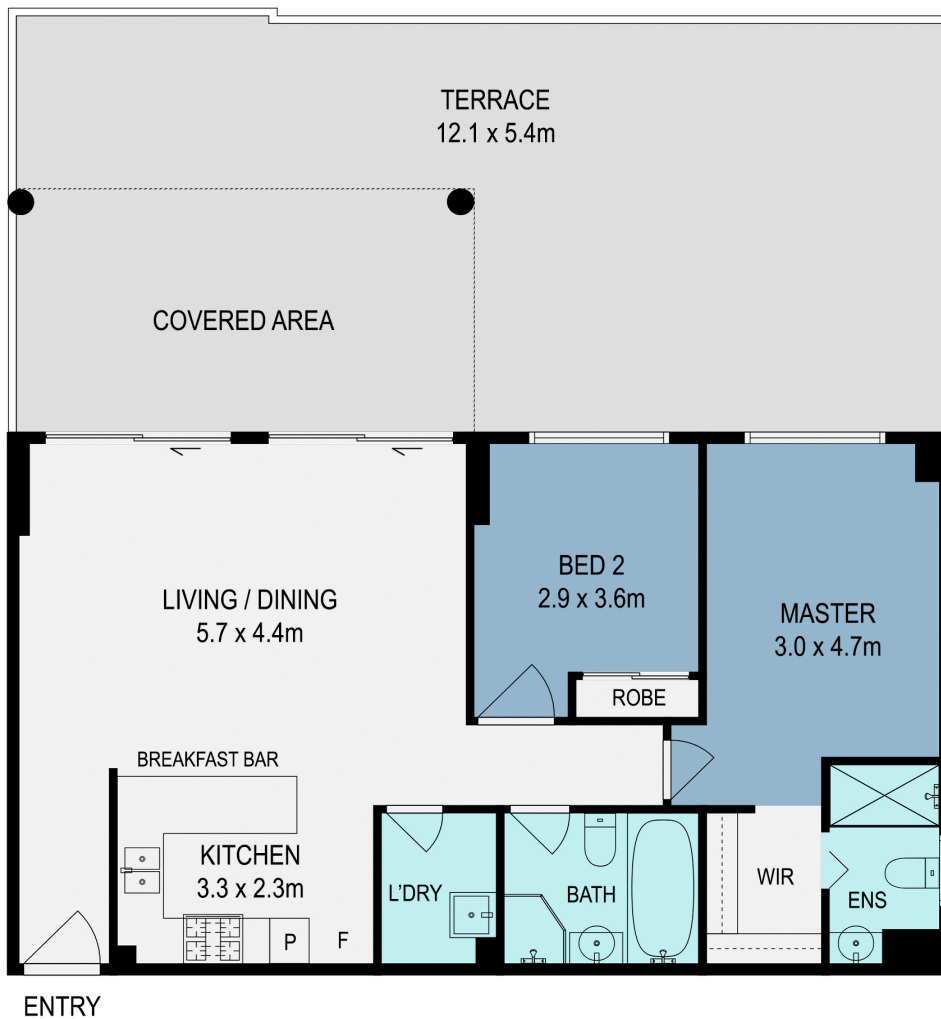
Shop 2/27-29 Burwood Road, BURWOOD NSW 2134
burwood.ljhooker.com.au | burwood@ljhburwood.com.au



All information contained therein is gathered from relevant third parties sources.
We cannot guarantee or give any warranty about the information provided.
Interested parties must rely solely on their own enquiries.



BASEMENT CAR SPACE
(NOT TO SCALE)



3/16-22 Burwood Road, Burwood

DISCLAIMER: THIS FLOOR PLAN IS INTENDED AS A GUIDE ONLY. IT DOES NOT CONSTITUTE PART OF ANY LEGAL DOCUMENTS. ALL DIMENSIONS ARE APPROXIMATE, ACTUAL MAY VARY. NO LIABILITY ACCEPTED. YOU MUST SEEK ADVICE FROM YOUR SOLICITOR. FLOOR PLAN BY WWW.MCPIXELSAU.COM