
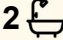



12/1A Gloucester Avenue, Burwood

2  2  1 

Sold By Rong You

FOR SALE
SOLD

North Facing Two Bedroom Apartment in the Iconic Adela Burwood

AGENTS

Immersed in the vibrant heart of Burwood, Adela sits within a tranquil, leafy pocket, creating a peaceful sanctuary amid the thriving town centre. Defined by bold, contemporary architecture, this beautifully appointed apartment offers a perfect balance of style, comfort, and convenience.

Rong You
0424 433 888
rong@ljhburwood.com.au

AGENCY

Featuring two generously sized bedrooms with built-in robes (master with ensuite), and two sleek modern bathrooms, the home is designed for effortless living. The gourmet kitchen boasts stone benchtops and premium Miele appliances, while the spacious open plan living and dining area flows seamlessly onto a north facing balcony, bathing the interiors in natural sunlight.

LJ Hooker Burwood
(02) 9745 3999

Additional highlights include ducted air conditioning, an internal laundry, secure basement parking, and a private storage cage. Residents also enjoy access to a stunning rooftop terrace, perfect for family gatherings and entertaining with friends.

Ideally located just steps from Burwood's vibrant shopping precinct, renowned eateries, and excellent public transport, this residence offers the ultimate combination of connectivity and contemporary

All information contained therein is gathered from relevant third parties sources.
We cannot guarantee or give any warranty about the information provided.
Interested parties must rely solely on their own enquiries.

 **LJ Hooker**

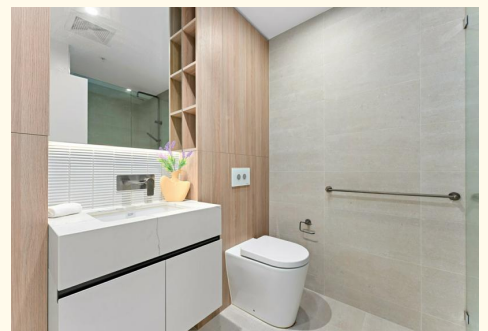
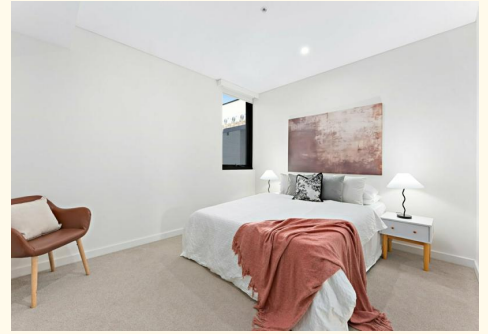
comfort.

MORE DETAILS

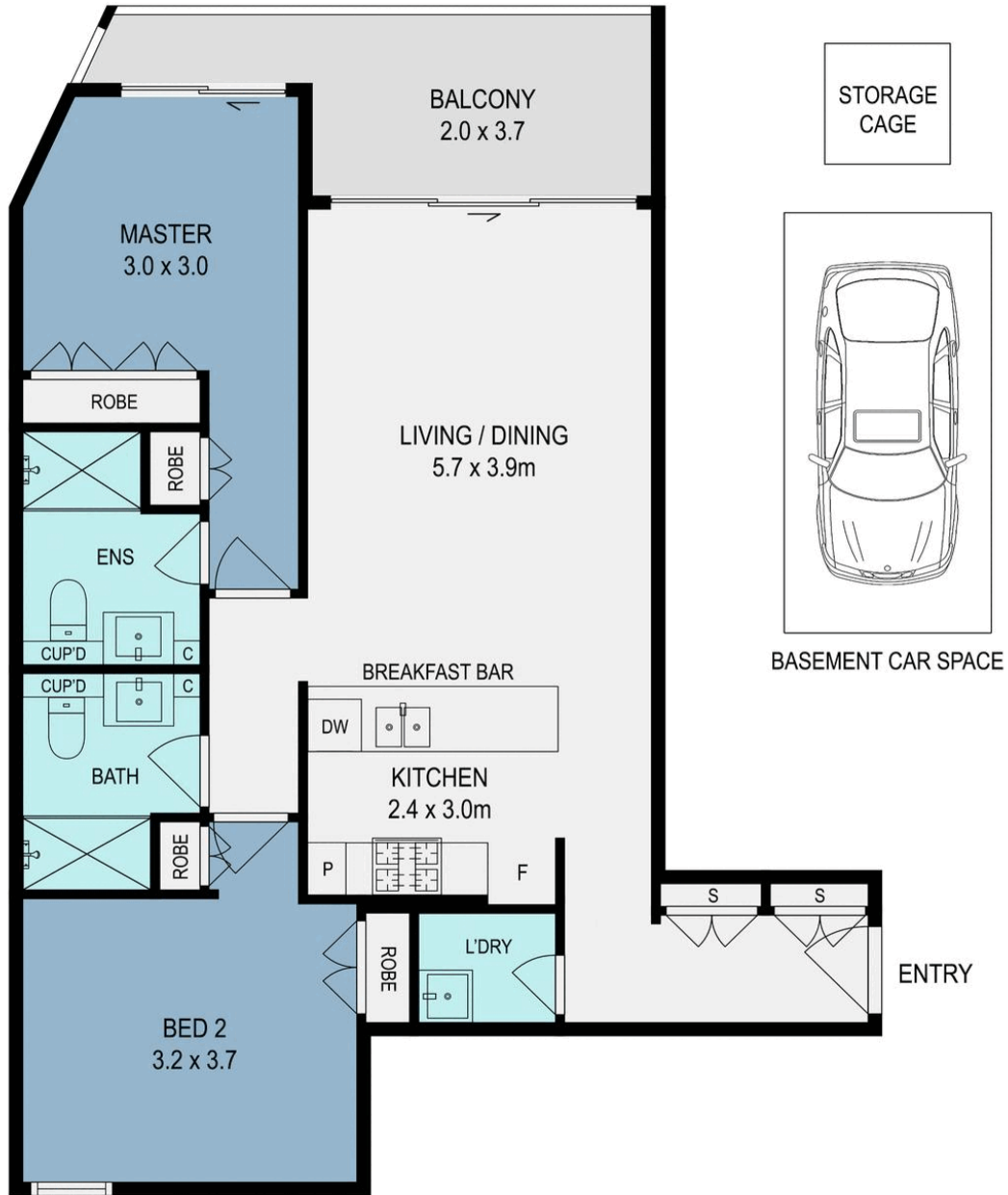
Property ID 11ZVF8R
Property Type Apartment
Land Area 106 m2

Rong You 0424 433 888
Sales | Licensed Real Estate Agent | rong@ljhburwood.com.au

LJ Hooker Burwood (02) 9745 3999
Shop 2/27-29 Burwood Road, BURWOOD NSW 2134
burwood.ljhooker.com.au | burwood@ljhburwood.com.au



All information contained therein is gathered from relevant third parties sources.
We cannot guarantee or give any warranty about the information provided.
Interested parties must rely solely on their own enquiries.



12/1A Gloucester Avenue, Burwood



DISCLAIMER: THIS FLOOR PLAN IS INTENDED AS A GUIDE ONLY. IT DOES NOT CONSTITUTE PART OF ANY LEGAL DOCUMENTS. ALL DIMENSIONS ARE APPROXIMATE, ACTUAL MAY VARY. NO LIABILITY ACCEPTED. YOU MUST SEEK ADVICE FROM YOUR SOLICITOR. FLOOR PLAN BY WWW.MCPIXELSAU.COM