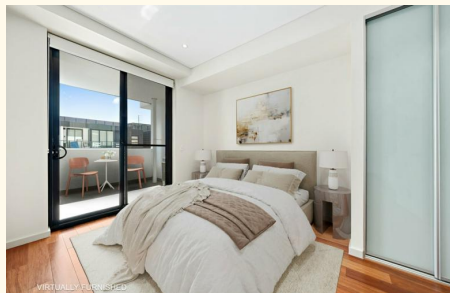




Sold



1001/43 Belmore Street, Burwood

## Sold By Rong You

Contemporary Elegance with Exceptional Convenience

Positioned on the 10th floor of Tower B within the renowned 'Burwood Grand' complex, this beautifully appointed two-bedroom apartment with a separate study offers refined modern living in one of Burwood's most convenient lifestyle locations.

The residence features a well-considered layout with two spacious bedrooms, each fitted with built-in wardrobes, complemented by a versatile study space ideal for working from home. Two contemporary bathrooms and a sleek, designer kitchen with stone benchtops and quality appliances add to the apartment's sense of style and practicality. The open-plan living and dining zone extends seamlessly to a generous balcony, creating an inviting space for everyday living and entertaining.

Comfort is assured year-round with ducted air conditioning, while timber flooring throughout, an internal laundry, and secure basement parking further enhance the home's appeal.

Enjoy the ultimate in convenience with Burwood Plaza, Emerald Square, Westfield Shopping Centre, Burwood Train Station, Burwood Park, popular cafes, restaurants, and reputable schools all just a short

2 🏠 2 🚿 1 🚗

### FOR SALE

Please Call

### AGENTS

Rong You  
0424 433 888  
rong@ljhburwood.com.au

### AGENCY

LJ Hooker Burwood  
(02) 9745 3999

All information contained therein is gathered from relevant third parties sources.  
We cannot guarantee or give any warranty about the information provided.  
Interested parties must rely solely on their own enquiries.

 **LJ Hooker**

stroll away. Offering a premium address, lifestyle ease, and strong rental demand, this apartment represents an outstanding opportunity in the heart of Burwood.

## MORE DETAILS

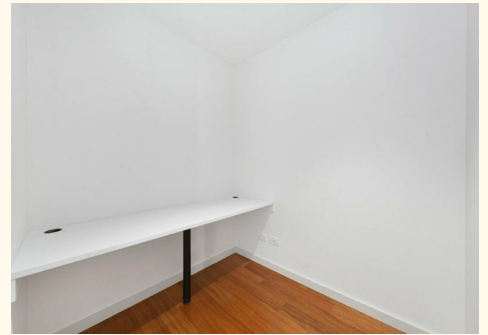
Property ID 127RF8R  
Property Type Apartment  
Land Area 110 m2

**Rong You 0424 433 888**

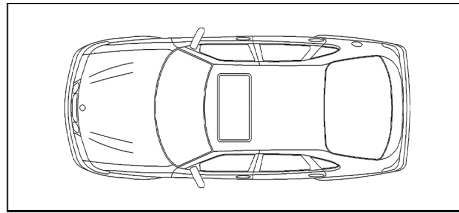
Sales | Licensed Real Estate Agent | [rong@ljhburwood.com.au](mailto:rong@ljhburwood.com.au)

**LJ Hooker Burwood (02) 9745 3999**

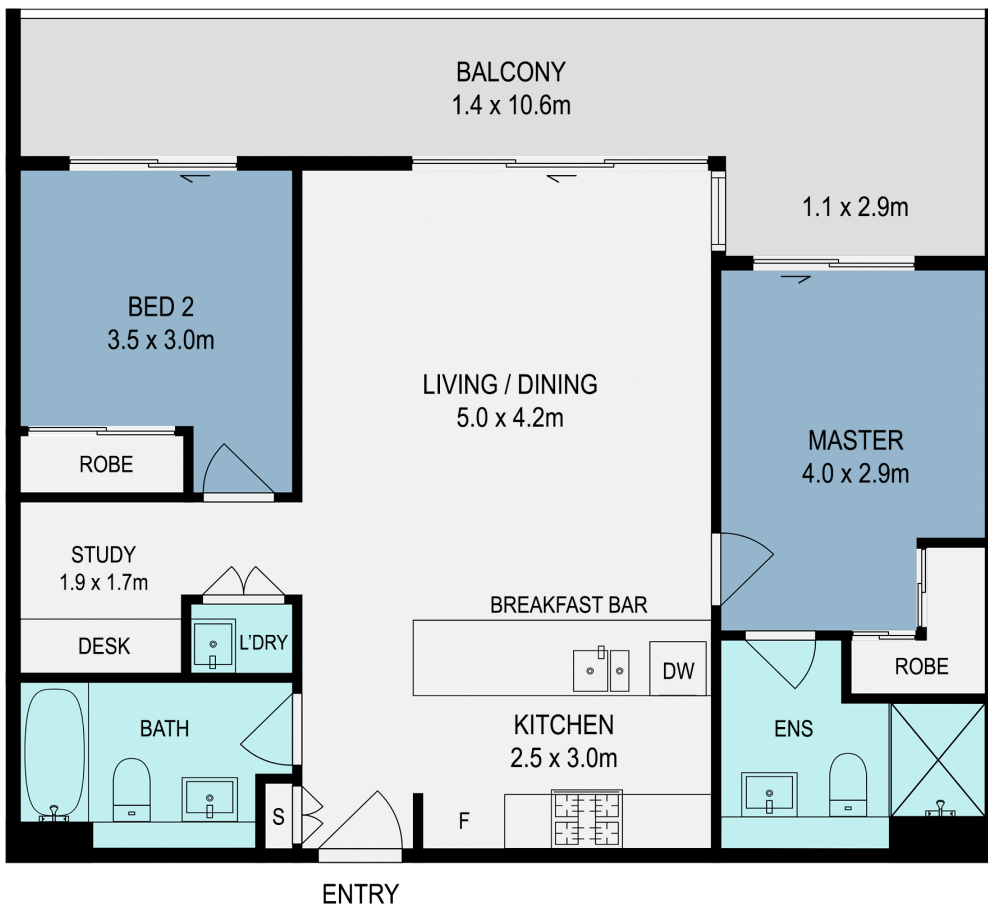
Shop 2/27-29 Burwood Road, BURWOOD NSW 2134  
[burwood.ljhooker.com.au](http://burwood.ljhooker.com.au) | [burwood@ljhburwood.com.au](mailto:burwood@ljhburwood.com.au)



All information contained therein is gathered from relevant third parties sources.  
We cannot guarantee or give any warranty about the information provided.  
Interested parties must rely solely on their own enquiries.



BASEMENT CAR SPACE  
(NOT TO SCALE)



1001/43 Belmore Street, Burwood



DISCLAIMER: THIS FLOOR PLAN IS INTENDED AS A GUIDE ONLY. IT DOES NOT CONSTITUTE PART OF ANY LEGAL DOCUMENTS. ALL DIMENSIONS ARE APPROXIMATE, ACTUAL MAY VARY. NO LIABILITY ACCEPTED. YOU MUST SEEK ADVICE FROM YOUR SOLICITOR. FLOOR PLAN BY WWW.MCPIXELSAU.COM