

Burpengary East, 1 Palm Close

Don't Miss This Opportunity Move-In Ready Family Home with All the Extras

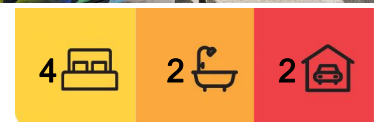
Immaculately presented and move in ready, 1 Palm Close is the ultimate lifestyle property for families who value space, functionality and comfort. This modern, low-set brick home offers a rare combination of thoughtful design, premium finishes and effortless indoor-outdoor flow, all located in one of Burpengary East's most connected and convenient neighbourhoods.

Step inside and be impressed by the light-filled interiors and generous proportions. The open-plan layout creates a central hub for everyday living and entertaining, while the stylish kitchen is a standout feature complete with stone benchtops, quality appliances and a fully equipped walk-in butler's pantry providing storage and prep space for even the most enthusiastic home cook.

Flowing seamlessly from the kitchen and dining area is a spacious undercover alfresco,



Disclaimer: All information contained therein is gathered from relevant third parties sources. We cannot guarantee or give any warranty about the information provided. Interested parties must rely solely on their own enquiries.



For Sale
OFFERS OVER \$1,000,000

View
By Appointment

Contact
Rebecca Blewitt
0468 344 533
rblewitt@ljh-kallangur.com.au

LJ Hooker Kallangur | Murrumba Downs
(07) 3204 4666

overlooking the sparkling inground swimming pool and beautifully maintained backyard. Whether it's summer BBQs, quiet evenings by the pool, or weekend entertaining with friends this home is made for making memories.

The master suite is privately positioned and features a walk-in robe and large ensuite, while the additional bedrooms are spacious, light, and serviced by a well-appointed family bathroom with a full-size bath.

The home also features air-conditioning to main area and a bedroom, ceiling fans throughout, a double lock-up garage and low-maintenance grounds with side access for the boat or caravan, all while being perfect for children and pets to play.

This property is the full package, Modern, practical, and beautifully maintained. The solar power system saves you money, the side access gives you flexibility, and the pool and alfresco area make every day feel like a holiday. Whether you're entertaining friends, raising a family, or enjoying a quiet weekend at home this home is ready to impress.

Key features:

- 4 Bedrooms
- Media Room
- Butlers pantry
- Double garage
- Solar panels
- Inground pool

Rental appraisal - \$750 - \$800 P/Week

Rates - \$523 Roughly Quarterly

Water - \$490 Roughly Quarterly

Local Schools

- Edge Early Learning North Harbour - 550m (1 min Drive)
- Burpengary Meadows State School - 10km (14 min Drive)
- Burpengary State Secondary College - 8km (10 min Drive)
- St Eugene College - 7km (10 min Drive)
- Bruce Highway - 7km (6 min drive)
- North Lakes shopping centre - 16km (15 min Drive)
- Morayfield shopping centre - 9km (12 min Drive)
- North Harbour dog park - 100m (1 min drive)

Disclaimer:

"Information contained on any marketing material, website or other portal should not be relied upon. You should make your own enquiries and seek your own independent advice with respect to any property advertised or the information about the property."

"LJ Hooker Property Connections also offer a property management service. If you're considering renting your property, are looking to buy or would like a free review of your current portfolio, please call our main office on (07) 32044666."



LJ Hooker Kallangur | Murrumba Downs
(07) 3204 4666

Disclaimer: All information contained therein is gathered from relevant third parties sources. We cannot guarantee or give any warranty about the information provided. Interested parties must rely solely on their own enquiries.

More About this Property

Property ID	27BVF39
Property Type	House
Land Area	638 m2
Including	Study Air Conditioning Toilets (2) Dishwasher Built-in-Robes

Rebecca Blewitt 0468 344 533

Area Specialist | rblewitt@ljh-kallangur.com.au

LJ Hooker Kallangur | Murrumba Downs (07) 3204 4666

1427 Anzac Avenue, KALLANGUR QLD 4503

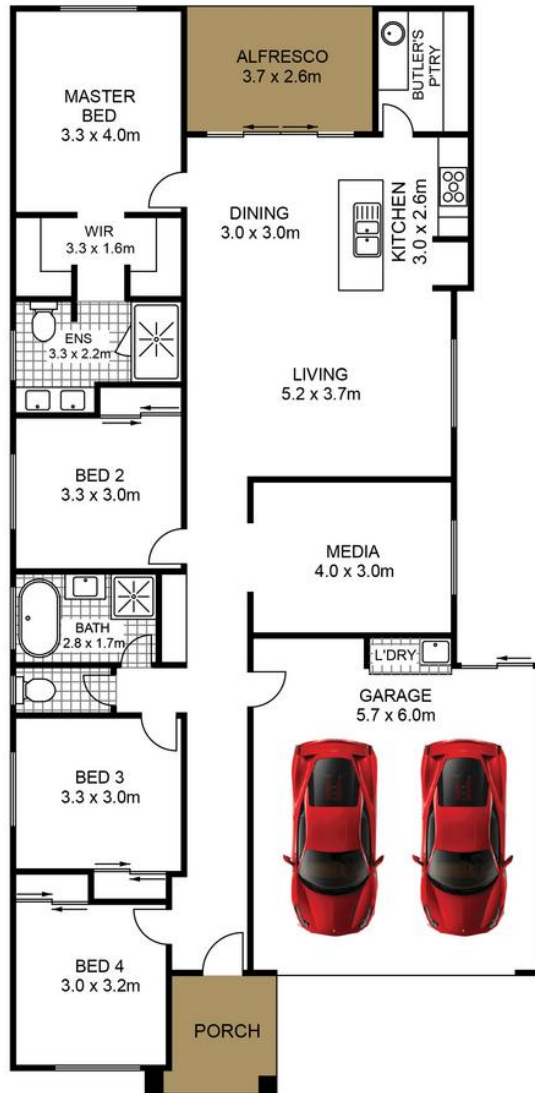
kallangurmurrumbadowns.ljhooker.com.au | LJHooker@LJH-Kallangur.com.au



Disclaimer: All information contained therein is gathered from relevant third parties sources.

We cannot guarantee or give any warranty about the information provided. Interested parties must rely solely on their own enquiries.

**LJ Hooker Kallangur | Murrumba
Downs
(07) 3204 4666**



INTERNAL LIVING AREA: 173sqm
 EXTERNAL LIVING AREA: 14sqm
 TOTAL LIVING AREA: 187sqm