



## Bundall, 3213/1-7 Waterford Court

Inner City Living At Its Best!

Enjoy the Gold Coast lifestyle at its finest with this stunning open plan 3-bedroom, 2-bathroom apartment, complete with a study, 2 large balconies and 2 side by side car spaces close to the elevators.

This unit is nestled in a lush tropical oasis in the highly sought-after Bundall area, close to HOTA, shopping, cafes, beaches and world class golf courses.

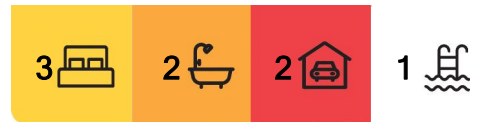
This property offers convenience, space, privacy and comfort.

Property Features:

- Low Strata fees \$97pw approx.
- 2 side by side car spaces in secure parking, close to elevator.
- Open plan living and dining area with air conditioning



**Disclaimer:** All information contained therein is gathered from relevant third parties sources. We cannot guarantee or give any warranty about the information provided. Interested parties must rely solely on their own enquiries.



**For Sale**  
\$850,000

**View**  
[ljhooker.com.au/GAJ0F](http://ljhooker.com.au/GAJ0F)

**Contact**  
**Rebecca Lukin**  
0417 140 672  
[rebecca.lukin@ljhooker.com.au](mailto:rebecca.lukin@ljhooker.com.au)  
**Katriya De Vincentiis**  
0410 620 845?  
[kat.devincentiis@ljhooker.com.au](mailto:kat.devincentiis@ljhooker.com.au)

**LJ Hooker Ashmore**  
**(07) 5526 9722**

- Two large private outdoor balconies with plantation shutters
- Modern kitchen with Caesarstone benches and stainless appliances
- Separate full-size laundry with ample storage.
- Additional large office space overlooking landscaped gardens.
- Luxurious bathrooms with walk-through frameless glass shower.
- Light-filled oversized bedrooms with built-ins, and master bedroom with walk-in robe and ensuite

Resort-Style Facilities:

- Sparkling resort-style pool
- Fully equipped gym
- BBQ and Entertainment Area
- Serene village-style gardens
- On-site café for convenience
- Pet-friendly environment
- Ample visitors parking for guests
- Secure access keypad entry for peace of mind

Location Benefits:

Enjoy the ultimate convenience with close proximity to the Gold Coast Turf Club, Farmers' markets, fine dining options in Chevron Island, and the Southport Golf Club. Surfers Paradise beaches are just a stone's throw away, offering a world-class lifestyle at your doorstep.

Don't miss this opportunity to make this exquisite apartment your own slice of paradise less than 4km to the beach.

Disclaimer: Whilst every effort has been made to ensure the accuracy of these particulars, no warranty is given by the vendor or the agent as to their accuracy. Interested parties should not rely on these particulars as representations of fact but must instead satisfy themselves by inspection or otherwise.

## More About this Property

<b>Property ID</b>	GAJ0F
<b>Property Type</b>	Unit
<b>House Size</b>	122 m2
<b>Including</b>	Ensuite Air Conditioning Toilets (2) Intercom Pool Balcony Gym Dishwasher Outdoor Entertaining Built-in-Robes Secure Parking Car Parking - Basement Carpeted Close to Schools Close to Shops Close to Transport

### Rebecca Lukin 0417 140 672

Sales Professional | [rebecca.lukin@ljhooker.com.au](mailto:rebecca.lukin@ljhooker.com.au)

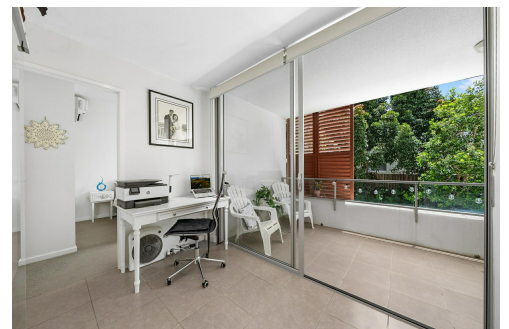
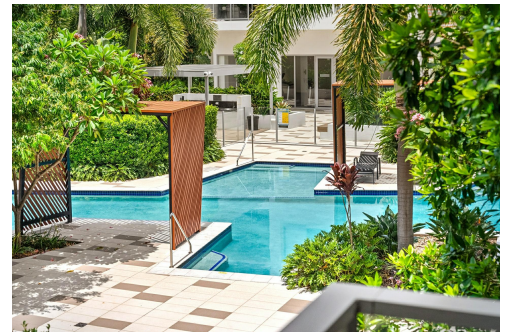
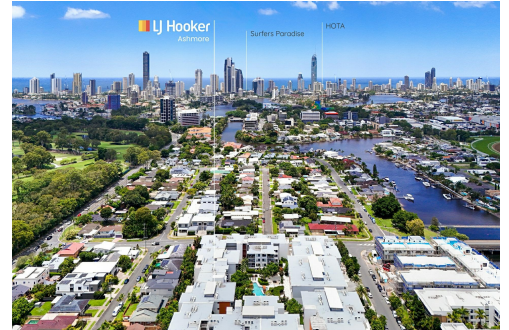
### Katriya De Vincentiis 0410 620 845?

Sales Professional | [kat.devincentiis@ljhooker.com.au](mailto:kat.devincentiis@ljhooker.com.au)

### LJ Hooker Ashmore (07) 5526 9722

167 Cotlew Street, ASHMORE QLD 4214

[ashmore.ljhooker.com.au](http://ashmore.ljhooker.com.au) | [admin.ashmore@ljhooker.com.au](mailto:admin.ashmore@ljhooker.com.au)

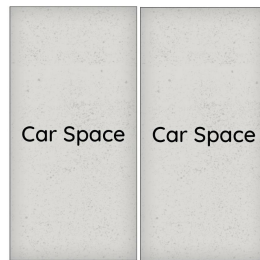
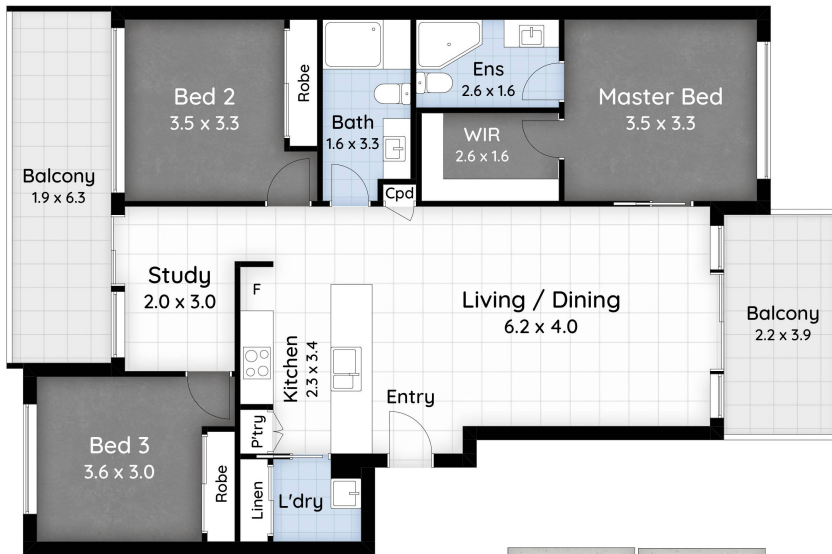


**LJ Hooker Ashmore**  
**(07) 5526 9722**

**Disclaimer:** All information contained therein is gathered from relevant third parties sources. We cannot guarantee or give any warranty about the information provided. Interested parties must rely solely on their own enquiries.

3213/1 Waterford Court  
Bundal

Internal - 102m<sup>2</sup>  
External - 20m<sup>2</sup>  
Total - 122m<sup>2</sup>



 **LJ Hooker**  
Ashmore

Disclaimer

This floor plan is intended for illustrative purposes only and may not accurately reflect the exact layout or dimensions of the property. All measurements and details should be independently verified. We take no responsibility for any discrepancies or errors in the information provided.