

Bunbury, Park Home 5/752 Koombana Drive

Your Golden Years are Looking Bright!

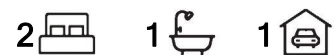
Live out your golden years in this Over 55's fantastic park home situated perfectly within the Discovery Parks along the Koombana Bay foreshore. Being only a skip, hop and a step from the beautiful calm waters of the Bay and only a short stroll or drive into the centre of town. What more could you ask for when living out your golden years?

Features of this property include:

- 1 x master bedroom
- 1 x minor bedroom
- Kitchen with ample bench and cupboard space + views overlooking dining area
- Open plan main living and dining area
- Main bathroom with separate shower and vanity
- Easily accessible walking paths
- Garage



Disclaimer: All information contained therein is gathered from relevant third parties sources. We cannot guarantee or give any warranty about the information provided. Interested parties must rely solely on their own enquiries.



For Sale
Offers Over \$330,000

View
ljhooker.com.au/16CBHND

Contact
Pat Shine
0438 263 068
pat.shine@ljhsouthwest.com.au

LJ Hooker Property South West WA
(08) 9791 6880

For more information, contact exclusive agent Pat Shine on 0438 263 068.

More About this Property

Property ID 16CBHND

Property Type House

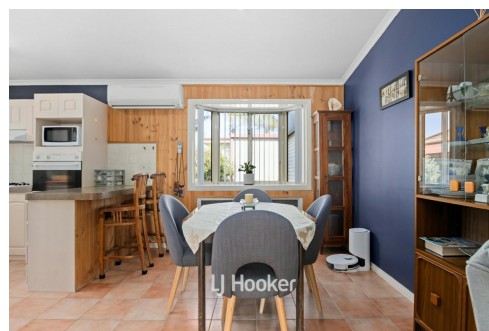
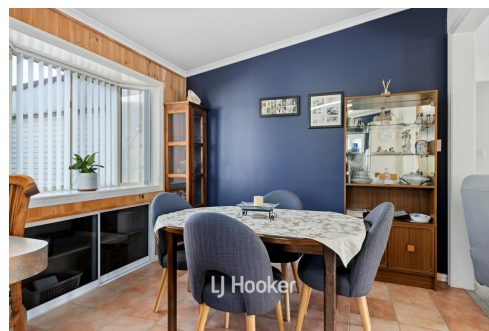
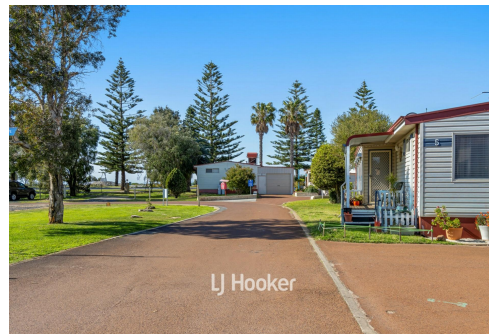
Pat Shine 0438 263 068

Sales Consultant | pat.shine@ljhsouthwest.com.au

LJ Hooker Property South West WA (08) 9791 6880

130 Victoria Street, BUNBURY WA 6230

southwestwa.ljhooker.com.au | bunbury@ljhsouthwest.com.au



Disclaimer: All information contained therein is gathered from relevant third parties sources.

We cannot guarantee or give any warranty about the information provided. Interested parties must rely solely on their own enquiries.

**LJ Hooker Property South West WA
(08) 9791 6880**